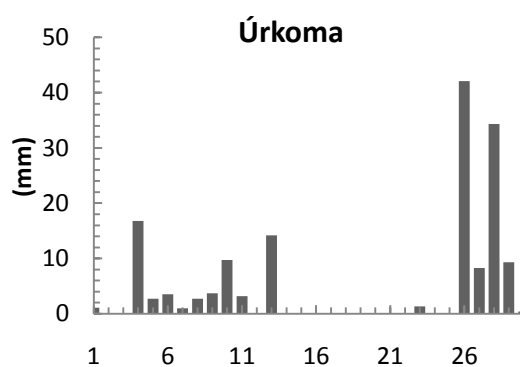
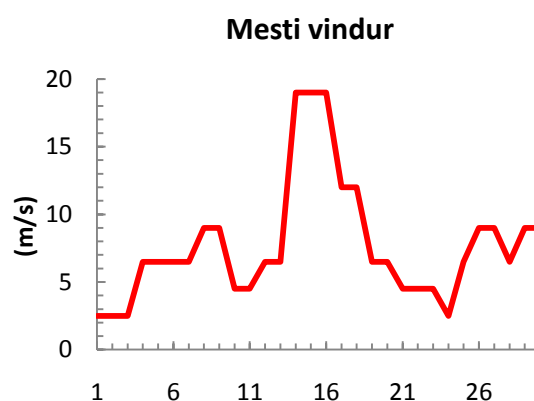
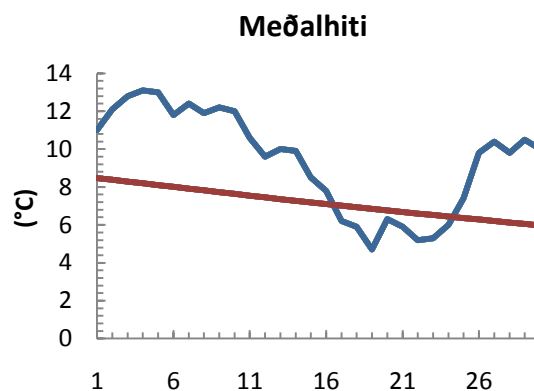


dagur	meðalhiti (°C)	Hámark (°C)	Lágmark (°C)	Úrkoma (mm)	Úrkomutegund	Snjódýpt (cm)	Snjöhula (0-4)	Sólskin (klst)	Meðalvindur (m/s)	Mesti vindur (m/s)	Hviða (m/s)
1	11.0	13.4	8.4	1.1	ri	0	0		1.4	2.5	
2	12.1	14.5	10.2	0.0		0	0		1.2	2.5	
3	12.8	15.8	9.2	0.1	ri	0	0		2.1	2.5	
4	13.1	15.1	12.2	16.8	ri	0	0		4.0	6.5	
5	13.0	15.4	11.6	2.7	ri	0	0		2.9	6.5	
6	11.8	13.5	10.7	3.5	ri	0	0		6.5	6.5	
7	12.4	13.7	11.2	1.0	ri	0	0		4.8	6.5	
8	11.9	13.4	10.7	2.7	ri	0	0		7.1	9.0	
9	12.2	13.6	11.4	3.7	ri	0	0		5.6	9.0	
10	12.0	13.4	11.0	9.7	ri	0	0		3.3	4.5	
11	10.6	14.1	9.1	3.2	ri	0	0		1.2	4.5	
12	9.6	13.0	5.2			0	0		3.1	6.5	
13	10.0	13.4	7.7	14.2	ri	0	0		1.6	6.5	
14	9.9	13.8	6.1	0.1	ri	0	0		10.9	19.0	
15	8.5	12.5	7.5	0.0		0	0		13.4	19.0	
16	7.8	11.2	6.5			0	0		10.9	19.0	
17	6.2	10.1	3.7			0	0		5.1	12.0	
18	5.9	12.0	3.6			0	0		1.4	12.0	
19	4.7	9.1	1.8			0	0		3.8	6.5	
20	6.3	10.0	2.8			0	0		2.2	6.5	
21	5.9	9.1	2.6	0.0		0	0		2.2	4.5	
22	5.2	9.0	3.1			0	0		2.2	4.5	
23	5.3	7.5	3.1	1.3	ri	0	0		1.4	4.5	
24	6.0	9.2	2.5			0	0		1.4	2.5	
25	7.4	9.7	3.1	0.0		0	0		3.4	6.5	
26	9.8	11.0	8.8	42.1	ri	0	0		6.6	9.0	
27	10.4	12.9	8.6	8.3	ri	0	0		4.2	9.0	
28	9.8	11.1	8.8	34.3	ri	0	0		5.8	6.5	
29	10.5	12.1	8.1	9.3	ri	0	0		6.1	9.0	
30	10.0	12.6	9.1	0.4	ri	0	0		5.6	9.0	



Meðalhiti (°C)	9.4
Frávik frá meðaltali 1961 - 1990 (°C)	
Meðalhámarkshiti (°C)	12.2
Meðallágmarkshiti (°C)	7.3
Úrkomumagn (mm)	154.5
Hlutfall úrkomu af meðaltali 1961-1990 (%)	
Meðalvindhraði (m/s)	4.4

