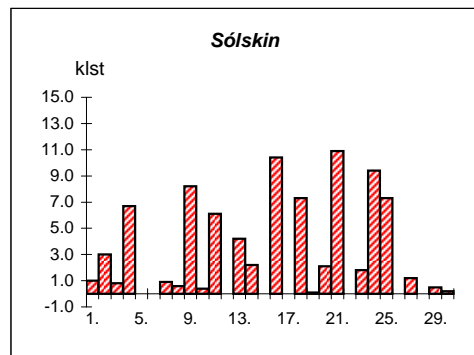
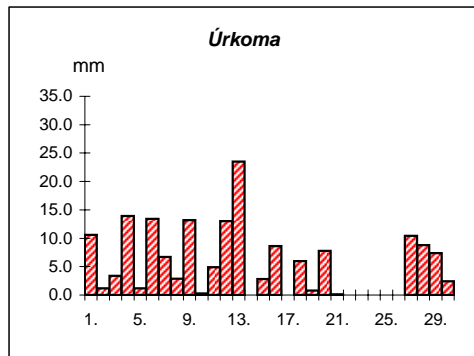
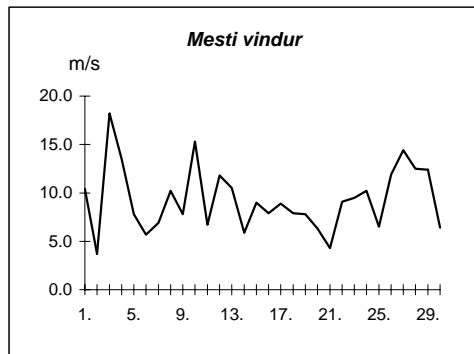
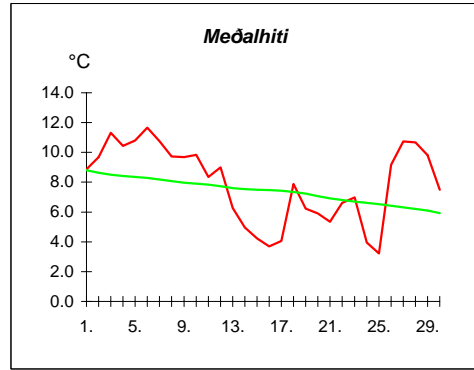


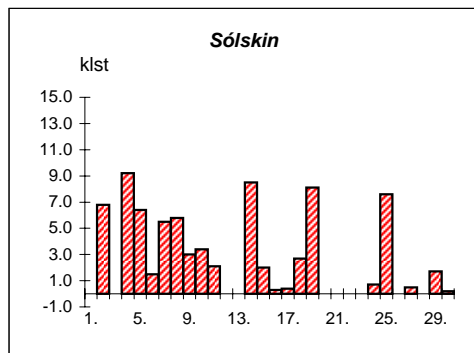
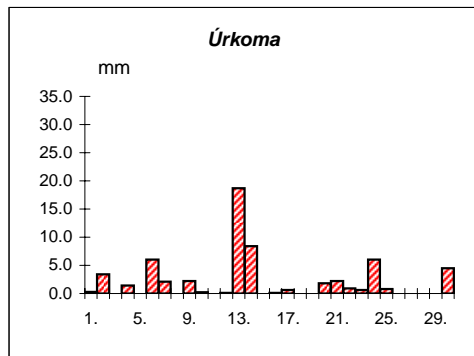
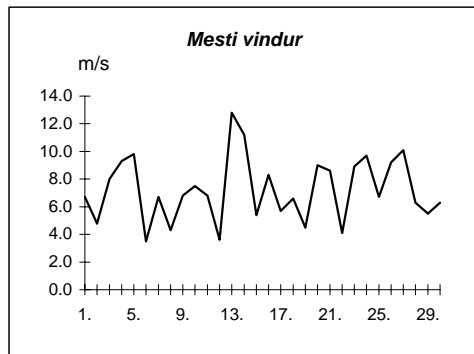
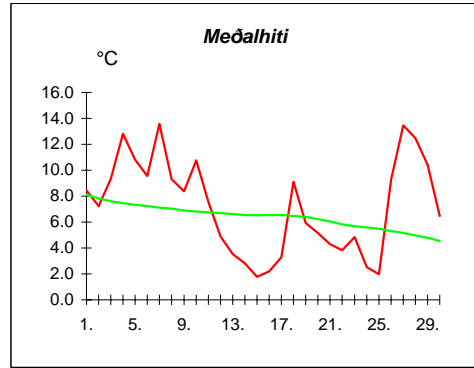
Reykjavík september 2007

Dags	Meðalhiti (°C)	Hámark (°C)	Lágmark (°C)	Úrkoma (mm)	Úrkomutegund	Snjódýpt (cm)	Snjöhula (0-4)	Sólskin(klst)	Meðalvindur (m/s)	Mesti vindur (m/s)	Hviða (m/s)
1.	8.9	11.5	7.5	10.6	ri			1.0	4.9	10.4	13.3
2.	9.7	12.8	6.7	1.2	ri			3.0	2.0	3.7	8.5
3.	11.3	13.7	8.2	3.4	ri			0.8	7.0	18.2	24.8
4.	10.4	14.2	8.7	13.9	ri			6.7	8.4	13.5	20.4
5.	10.8	12.0	9.7	1.2	ri			0.0	4.0	7.8	11.8
6.	11.7	13.5	9.5	13.4	ri			0.0	2.7	5.7	9.0
7.	10.8	12.9	10.2	6.7	ri			0.9	4.0	6.9	10.6
8.	9.7	11.1	8.0	2.9	ri			0.6	3.8	10.2	15.8
9.	9.7	11.6	8.5	13.2	ri			8.2	3.2	7.8	11.5
10.	9.8	12.5	7.9	0.3	ri			0.4	6.4	15.3	15.6
11.	8.4	11.1	6.4	4.9	ri			6.1	3.7	6.7	10.8
12.	9.0	13.0	6.1	13.0	ri			0.0	5.4	11.8	19.2
13.	6.3	12.4	4.9	23.5	ri			4.2	5.3	10.5	18.7
14.	5.0	8.0	1.1	0.0	ri			2.2	3.3	5.9	11.0
15.	4.2	7.9	3.8	2.8	sl			0.0	4.4	9.0	16.0
16.	3.7	6.3	0.5	8.6	ri			10.4	4.5	7.9	13.9
17.	4.0	6.1	-1.1					0.0	3.7	8.9	12.5
18.	7.9	10.4	4.4	6.0	ri			7.3	4.1	7.9	11.5
19.	6.2	9.5	4.9	0.8	ri			0.1	4.4	7.8	12.8
20.	5.9	8.9	4.4	7.8	ri			2.1	2.4	6.3	10.4
21.	5.4	9.4	1.3	0.1	ri			10.9	1.8	4.3	6.9
22.	6.6	9.4	4.5					0.0	5.4	9.1	15.9
23.	7.0	9.8	5.9	0.0	ri			1.8	6.0	9.5	18.3
24.	4.0	7.5	3.8					9.4	6.7	10.2	20.4
25.	3.2	6.2	-0.9					7.3	2.4	6.5	11.8
26.	9.2	11.4	4.9	0.0	ri			0.0	8.9	11.9	22.0
27.	10.7	12.2	10.5	10.4	ri			1.2	9.9	14.4	23.3
28.	10.7	11.9	9.4	8.8	ri			0.0	6.2	12.5	17.5
29.	9.8	11.2	9.7	7.4	ri			0.5	5.3	12.4	18.6
30.	7.5	10.2	7.0	2.4	ri			0.2	2.3	6.4	9.0



Meðalhiti	=	7.9 °C
Frávik frá meðaltali 1961-90	=	0.5 °C
Meðalhámarkshiti	=	10.6 °C
Meðallágmarkshiti	=	5.9 °C
Úrkomumagn	=	163.3 mm
Hlutfall úrkomu af meðaltali 1961-90	=	243.7 %
Meðalvindhraði	=	4.7 m/s
Sólskinsstundir	=	85.3 klst

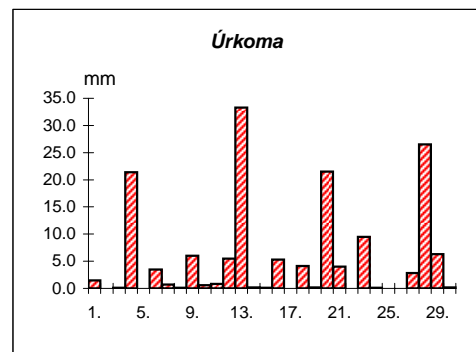
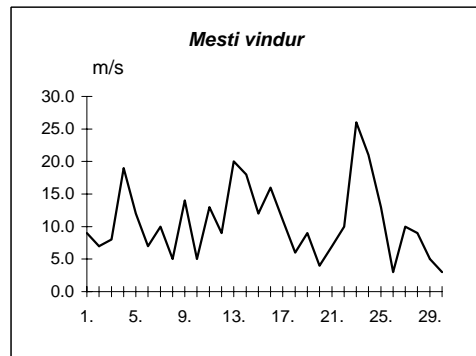
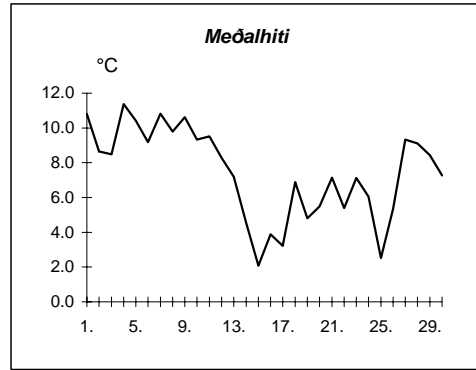
Dags	Meðalhiti (°C)	Hámark (°C)	Lágmark (°C)	Úrkoma (mm)	Úrkomutegund	Snjódypt (cm)	Snjóhula (0-4)	Sólskin(klst)	Meðalvindur (m/s)	Mesti vindur (m/s)	Hviða (m/s)
1.	8.5	10.4	8.3	0.3	ri			0.0	2.8	6.7	10.4
2.	7.2	10.0	6.0	3.4	ri			6.8	2.5	4.8	7.3
3.	9.3	12.6	2.4	0.0	ri			0.0	3.6	8.0	14.3
4.	12.8	17.5	11.4	1.4	ri			9.2	6.3	9.3	20.5
5.	10.8	13.9	10.2	0.0	ri			6.4	2.4	9.8	20.0
6.	9.6	12.0	8.0	6.0	ri			1.5	1.1	3.5	5.2
7.	13.6	16.8	8.5	2.1	ri			5.5	2.2	6.7	11.7
8.	9.3	16.5	8.2					5.8	2.1	4.3	6.5
9.	8.4	10.8	8.0	2.2	ri			3.0	2.8	6.8	10.8
10.	10.8	18.0	5.5	0.2	ri			3.4	3.2	7.5	14.5
11.	7.5	17.5	6.0	0.0	ri			2.1	2.6	6.8	12.2
12.	4.9	8.0	3.7	0.1	ri			0.0	1.8	3.6	7.5
13.	3.5	6.3	2.0	18.7	sl			0.0	8.0	12.8	18.6
14.	2.8	6.6	0.8	8.4	sl			8.5	3.1	11.2	16.0
15.	1.8	6.0	-1.0					2.0	1.9	5.4	12.5
16.	2.2	4.4	1.2	0.1	sl			0.3	4.3	8.3	13.2
17.	3.3	6.5	-1.5	0.6	sl			0.4	2.9	5.7	9.8
18.	9.1	13.5	4.6					2.7	1.7	6.6	10.8
19.	5.9	11.0	2.5	0.0	ri			8.1	1.7	4.5	7.9
20.	5.2	11.0	4.5	1.8	ri			0.0	4.9	9.0	13.6
21.	4.3	6.2	3.2	2.2	ri			0.0	2.8	8.6	11.8
22.	3.8	5.6	0.6	0.9	ri			0.0	1.7	4.1	8.0
23.	4.8	6.4	4.2	0.6	ri			0.0	4.3	8.9	15.9
24.	2.5	8.7	2.0	6.0	ri			0.7	7.3	9.7	16.5
25.	2.0	6.1	-0.6	0.8	ri			7.6	2.8	6.7	11.3
26.	9.3	11.2	1.0					0.0	4.6	9.2	16.2
27.	13.5	15.0	11.2	0.0	ri			0.5	7.5	10.1	21.2
28.	12.5	15.1	10.9					0.0	3.0	6.3	12.9
29.	10.4	14.8	9.3					1.7	2.5	5.5	9.6
30.	6.5	11.5	5.0	4.5	ri			0.2	2.6	6.3	9.2



Meðalhiti	=	7.2 °C
Frávik frá meðaltali 1961-90	=	0.9 °C
Meðalhámarkshiti	=	11.0 °C
Meðallágmarkshiti	=	4.9 °C
Úrkomumagn	=	60.4 mm
Hlutfall úrkomu af meðaltali 1961-90	=	154.8 %
Meðalvindhraði	=	3.4 m/s
Sólskinsstundir	=	76.4 klst

Höfn september 2007

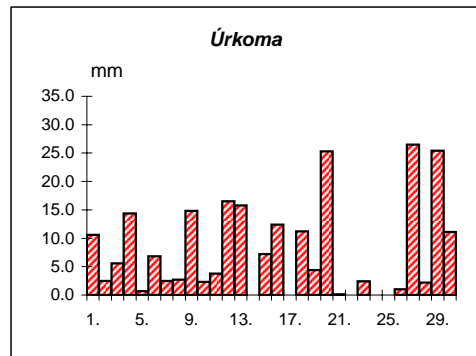
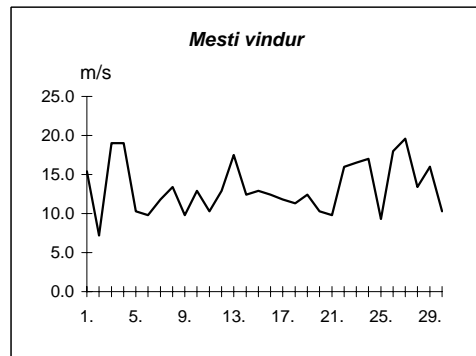
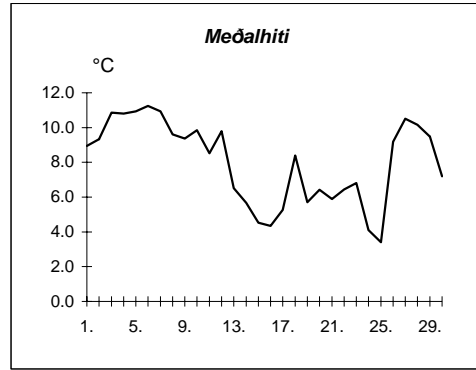
Dags	Meðalhiti (°C)	Hámark (°C)	Lágmark (°C)	Úrkoma (mm)	Úrkomutegund	Snjódýpt (cm)	Snjöhula (0-4)	Sólskín(klst)	Meðalvindur (m/s)	Mesti vindur (m/s)	Hviða (m/s)
1.	10.8	16.0	7.1	1.5	ri				4.9	9.0	
2.	8.7	13.1	7.2	0.0	ri				4.9	7.0	
3.	8.5	10.4	4.8	0.1	ri				4.4	8.0	
4.	11.4	12.6	9.3	21.4	ri				14.2	19.0	
5.	10.4	13.9	7.0	0.0	ri				3.4	12.0	
6.	9.2	12.0	7.1	3.5	ri				2.9	7.0	
7.	10.8	15.9	7.7	0.7	ri				3.2	10.0	
8.	9.8	14.4	5.7	0.1	ri				1.6	5.0	
9.	10.6	14.1	8.0	6.0	ri				7.9	14.0	
10.	9.3	12.5	7.6	0.6	ri				2.3	5.0	
11.	9.5	12.9	5.7	0.8	ri				7.0	13.0	
12.	8.3	11.7	5.8	5.5	ri				2.4	9.0	
13.	7.2	10.3	5.7	33.3	ri				11.9	20.0	
14.	4.5	7.7	1.9	0.2	ri				8.6	18.0	
15.	2.1	6.0	0.1	0.1	sl				7.9	12.0	
16.	3.9	7.8	0.1	5.3	sl		2		12.4	16.0	
17.	3.2	6.9	0.3						4.0	11.0	
18.	6.9	10.5	1.8	4.1	ri				4.0	6.0	
19.	4.8	10.5	0.9	0.2	ri				3.9	9.0	
20.	5.5	7.5	3.0	21.5	ri				1.6	4.0	
21.	7.1	10.5	5.2	4.0	ri				5.5	7.0	
22.	5.4	8.8	3.8	0.0	ri				5.9	10.0	
23.	7.1	8.5	4.7	9.5	ri				14.6	26.0	
24.	6.1	8.6	5.1	0.1	ri				15.4	21.0	
25.	2.5	5.7	1.4						6.4	13.0	
26.	5.4	8.0	-0.8						2.1	3.0	
27.	9.3	10.7	5.7	2.8	ri				7.9	10.0	
28.	9.1	9.7	8.9	26.5	ri				5.6	9.0	
29.	8.4	10.2	7.5	6.3	ri				2.1	5.0	
30.	7.3	10.5	4.8	0.2	ri				1.3	3.0	



Meðalhiti	=	7.4 °C
Meðalhámarkshiti	=	10.6 °C
Meðallágmarkshiti	=	4.8 °C
Úrkomumagn	=	154.4 mm
Meðalvindhraði	=	6.0 m/s

Útgefandi : **Veðurstofa Íslands**
 Heimilisfang : **Bústaðavegur 9**
150 Reykjavík

Dags	Meðalhiti (°C)	Hámark (°C)	Lágmark (°C)	Úrkoma (mm)	Úrkomutegund	Snjódýpt (cm)	Snjóhula (0-4)	Sólskin (klst)	Meðalvindur (m/s)	Mesti vindur (m/s)	Hviða (m/s)
1.	8.9	11.3	7.7	10.6	ri				9.0	15.4	20.1
2.	9.3	12.0	7.0	2.5	ri				3.5	7.2	9.3
3.	10.9	12.8	8.0	5.6	ri				10.3	19.0	24.7
4.	10.8	13.0	9.2	14.4	ri				13.5	19.0	26.3
5.	10.9	12.0	10.0	0.7	ri				6.6	10.3	14.4
6.	11.3	12.5	9.8	6.8	ri				6.3	9.8	13.9
7.	10.9	12.1	10.2	2.5	ri				6.9	11.8	13.9
8.	9.6	11.2	7.8	2.7	ri				7.3	13.4	17.5
9.	9.4	11.7	8.9	14.8	ri				5.6	9.8	12.4
10.	9.8	12.2	8.0	2.3	ri				9.6	12.9	18.0
11.	8.5	11.1	6.2	3.8	ri				5.3	10.3	12.9
12.	9.8	12.5	8.0	16.5	ri				8.1	12.9	18.5
13.	6.5	12.5	5.4	15.8	ri				10.6	17.5	21.6
14.	5.7	10.5	2.8	0.0	ri				6.5	12.4	16.0
15.	4.5	8.7	3.7	7.2	ri				8.5	12.9	16.5
16.	4.3	8.2	2.9	12.4	ri				7.4	12.4	16.5
17.	5.3	10.3	0.0						6.5	11.8	16.5
18.	8.4	10.2	6.9	11.2	ri				7.2	11.3	14.4
19.	5.7	10.0	4.5	4.4	ri				7.1	12.4	15.4
20.	6.4	8.5	3.9	25.3	ri				5.9	10.3	14.4
21.	5.9	8.4	4.3	0.1	ri				5.3	9.8	13.9
22.	6.4	8.4	4.7	0.0	ri				9.0	16.0	20.1
23.	6.8	10.5	6.0	2.4	ri				12.1	16.5	21.1
24.	4.1	6.9	3.9	0.0	ri				12.9	17.0	22.7
25.	3.4	8.6	1.0						4.0	9.3	12.4
26.	9.2	11.4	3.9	1.0	ri				14.1	18.0	24.2
27.	10.5	11.7	10.3	26.5	ri				13.2	19.6	25.7
28.	10.2	11.5	9.2	2.2	ri				8.8	13.4	17.5
29.	9.5	10.8	9.3	25.4	ri				9.1	16.0	21.6
30.	7.2	10.0	6.7	11.1	ri				4.5	10.3	14.4



Meðalhiti	=	8.0 °C
Frávik frá meðaltali 1961-90	=	0.7 °C
Meðalhámarkshiti	=	10.7 °C
Meðallágmarkshiti	=	6.3 °C
Úrkomumagn	=	228.2 mm
Hlutfall úrkomu af meðaltali 1961-90	=	257.3 %
Meðalvindhraði	=	8.1 m/s