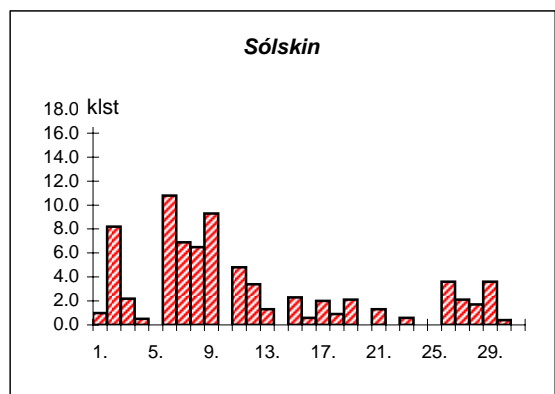
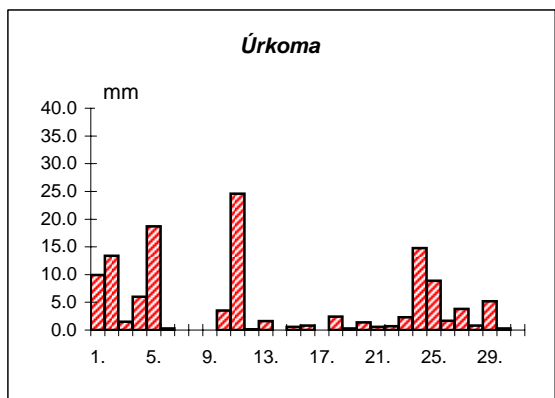
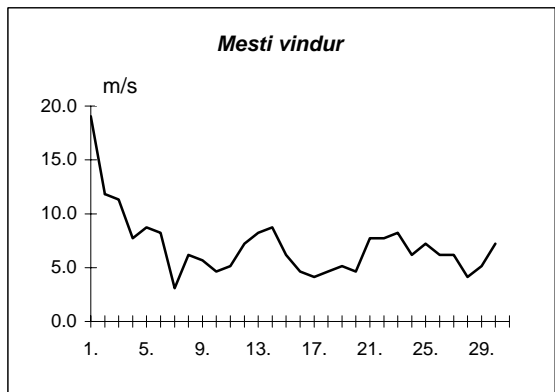
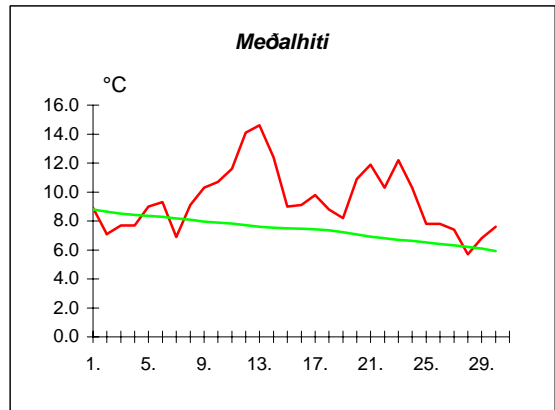
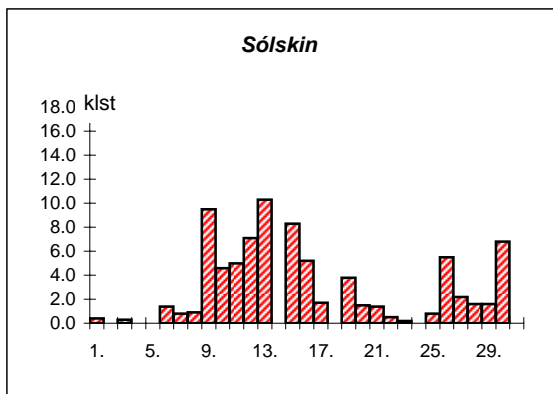
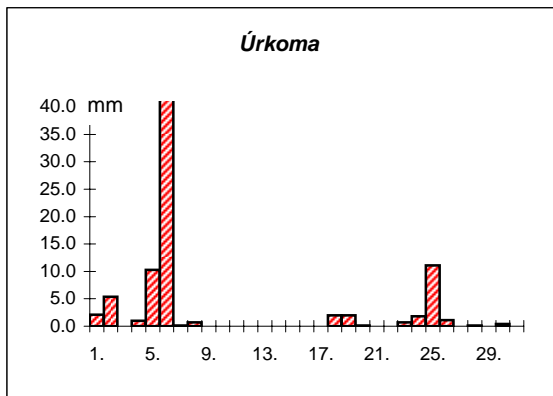
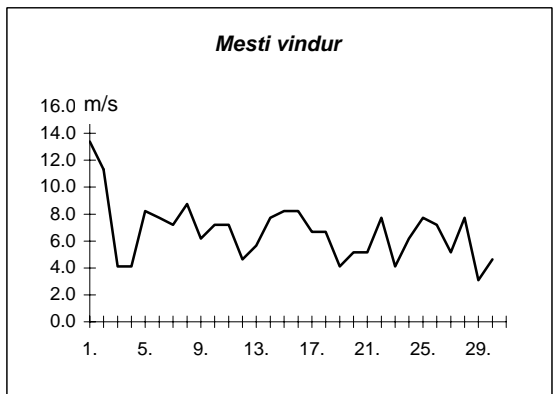
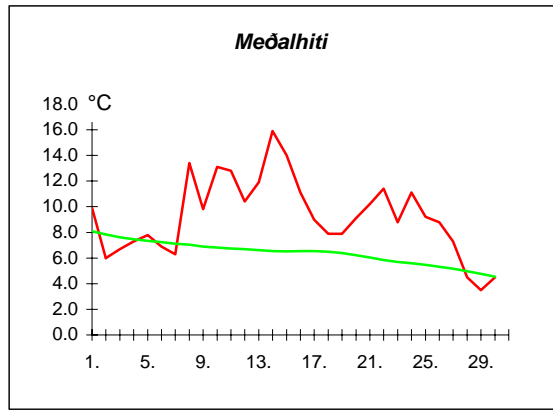


Dags	Meðalhiti (°C)	Hámark (°C)	Lágmark (°C)	Úrkoma (mm)	Úrkomutegund	Snjódypt (cm)	Snjóhula (0-4)	Sólskin(klst)	Meðalvindur (m/s)	Mesti vindur (m/s)	Hviða (m/s)
1.	8.9	13.5	7.5	9.9	ri		0	1.0	9.9	19.0	28.8
2.	7.1	11.2	6.2	13.4	ri		0	8.2	4.1	11.8	16.5
3.	7.7	11.3	3.5	1.5	ri		0	2.2	5.1	11.3	16.0
4.	7.7	10.5	7.0	6.0	ri		0	0.5	4.1	7.7	12.9
5.	9.0	10.3	6.4	18.7	ri		0	0.0	4.4	8.8	14.4
6.	9.3	12.4	7.8	0.3	ri		0	10.8	3.2	8.2	11.8
7.	6.9	11.2	2.3	---			0	6.9	1.6	3.1	4.6
8.	9.1	12.9	5.6	---			0	6.5	2.8	6.2	8.2
9.	10.3	13.5	7.0	---			0	9.3	3.2	5.7	8.2
10.	10.7	12.6	9.2	3.5	ri		0	0.0	2.4	4.6	6.2
11.	11.6	14.5	9.4	24.6	ri		0	4.8	2.3	5.1	7.7
12.	14.1	17.6	10.0	0.1	ri		0	3.4	4.3	7.2	11.8
13.	14.6	16.5	13.3	1.6	ri		0	1.3	4.5	8.2	11.3
14.	12.4	15.5	11.7	0.0			0	0.0	4.6	8.8	11.8
15.	9.0	12.7	8.4	0.6	ri		0	2.3	3.1	6.2	8.2
16.	9.1	11.0	7.8	0.8	ri		0	0.6	2.1	4.6	6.2
17.	9.8	12.0	7.5	0.0			0	2.0	1.4	4.1	6.2
18.	8.8	11.5	8.0	2.4	ri		0	0.9	2.3	4.6	6.7
19.	8.2	10.6	4.2	0.3	ri		0	2.1	3.2	5.1	8.8
20.	10.9	12.0	9.4	1.4	ri		0	0.0	1.8	4.6	6.2
21.	11.9	13.8	10.5	0.6	ri		0	1.3	4.4	7.7	10.3
22.	10.3	11.8	8.6	0.7	ri		0	0.0	3.2	7.7	13.9
23.	12.2	14.4	9.6	2.3	ri		0	0.6	3.9	8.2	11.8
24.	10.3	13.0	7.8	14.8	ri		0	0.0	3.9	6.2	9.3
25.	7.8	8.9	6.4	8.9	ri		0	0.0	4.0	7.2	11.3
26.	7.8	10.2	6.1	1.7	ri		0	3.6	3.3	6.2	8.8
27.	7.4	9.5	6.8	3.8	ri		0	2.1	2.9	6.2	9.8
28.	5.7	9.0	4.2	0.8	ri		0	1.7	2.0	4.1	6.2
29.	6.8	8.7	5.1	5.2	ri		0	3.6	2.8	5.1	7.7
30.	7.6	10.4	4.7	0.3	ri		0	0.4	4.3	7.2	10.8



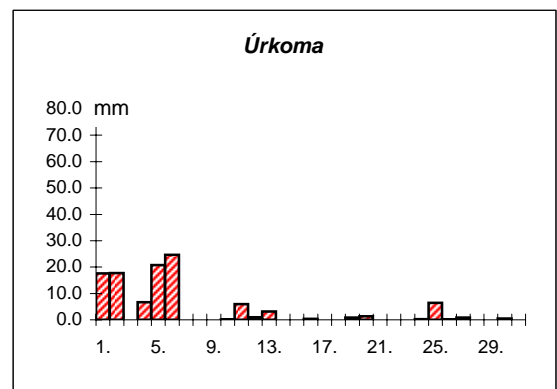
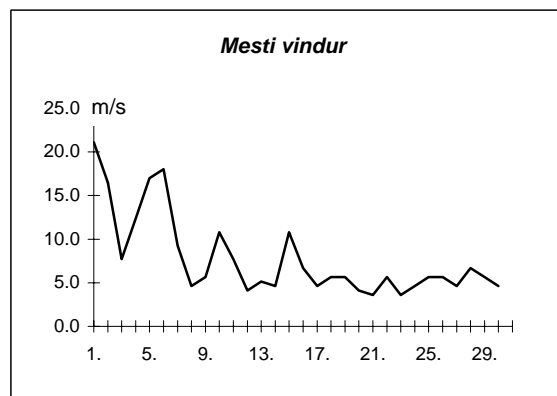
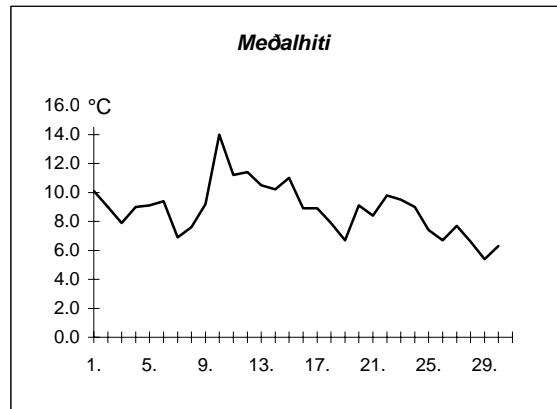
Meðalhiti	=	9.4 °C
Frávik frá meðaltali 1931-60	=	0.8 °C
Meðalhámarkshiti	=	12.1 °C
Meðallágmarkshiti	=	7.4 °C
Úrkomumagn	=	124.2 mm
Hlutfall úrkomu af meðaltali 1931-60	=	173.0 %
Meðalvindhraði	=	3.5 m/s
Sólskinsstundir	=	76.1 klst

Dags	Meðalhiti (°C)	Hámark (°C)	Lágmark (°C)	Úrkoma (mm)	Úrkomutegund	Snjódýpt (cm)	Snjóhula (0-4)	Sólskin(klst)	Meðalvindur (m/s)	Mesti vindur (m/s)	Hviða (m/s)
1.	9.9	15.1	7.4	2.1	ri		0	0.4	5.3	13.4	25.2
2.	6.0	11.5	5.0	5.4	ri		0	0.0	5.1	11.3	17.5
3.	6.7	10.5	2.2	---			0	0.3	2.5	4.1	6.2
4.	7.3	10.2	5.4	1.0	ri		0	0.0	3.0	4.1	6.7
5.	7.8	9.5	5.9	10.3	ri		0	0.0	5.6	8.2	13.4
6.	6.9	8.5	6.8	41.9	ri		0	1.4	4.9	7.7	14.9
7.	6.3	9.0	2.4	0.1	ri		0	0.8	3.1	7.2	10.8
8.	13.4	18.0	8.0	0.7	ri		0	0.9	4.0	8.8	16.0
9.	9.8	17.3	7.2	---			0	9.5	2.8	6.2	8.2
10.	13.1	19.6	5.2	---			0	4.6	3.8	7.2	11.8
11.	12.8	17.7	12.0	---			0	5.0	3.7	7.2	13.4
12.	10.4	14.5	6.5	---			0	7.1	2.6	4.6	6.2
13.	11.9	15.8	8.0	---			0	10.3	2.3	5.7	7.7
14.	15.9	20.6	10.3	---			0	0.0	4.9	7.7	12.9
15.	14.0	18.5	13.5	---			0	8.3	4.4	8.2	13.9
16.	11.1	14.5	8.5	---			0	5.2	3.6	8.2	14.4
17.	9.0	13.0	8.2	---			0	1.7	3.2	6.7	9.8
18.	7.9	9.4	7.4	2.0	ri		0	0.0	3.0	6.7	10.3
19.	7.9	11.5	7.2	2.0	ri		0	3.8	2.6	4.1	6.2
20.	9.1	11.2	6.6	0.1	ri		0	1.5	2.6	5.1	6.7
21.	10.2	14.5	8.5	---			0	1.4	2.3	5.1	8.8
22.	11.4	17.0	8.0	---			0	0.5	3.7	7.7	10.8
23.	8.8	11.3	7.5	0.7	ri		0	0.2	2.3	4.1	5.1
24.	11.1	13.4	8.5	1.8	ri		0	0.0	2.7	6.2	9.8
25.	9.2	12.5	7.0	11.1	ri		0	0.8	4.1	7.7	10.8
26.	8.8	13.0	6.8	1.1	ri		0	5.5	3.4	7.2	13.4
27.	7.3	11.0	5.3	---			0	2.2	1.9	5.1	8.8
28.	4.5	9.0	4.0	0.1	ri		0	1.6	4.6	7.7	10.3
29.	3.5	8.3	0.3	---			0	1.6	1.9	3.1	4.1
30.	4.5	9.0	0.4	0.4	ri		0	6.8	2.5	4.6	7.7



Meðalhiti	=	9.2 °C
Frávik frá meðaltali 1931-60	=	1.4 °C
Meðalhámarkshiti	=	13.2 °C
Meðallágmarkshiti	=	6.7 °C
Úrkomumagn	=	80.8 mm
Hlutfall úrkomu af meðaltali 1931-60	=	176.0 %
Meðalvindhraði	=	3.4 m/s
Sólskinsstundir	=	81.4 klst

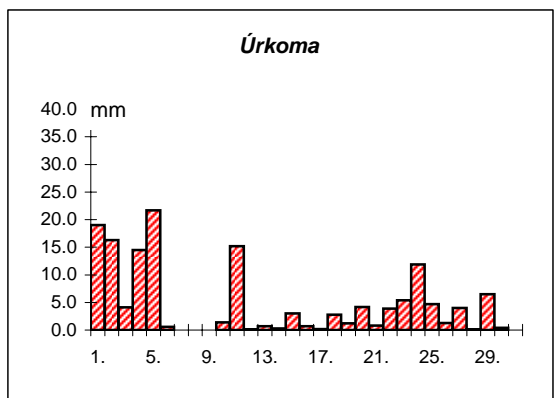
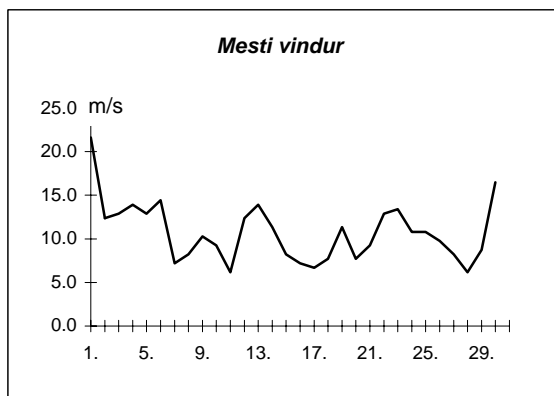
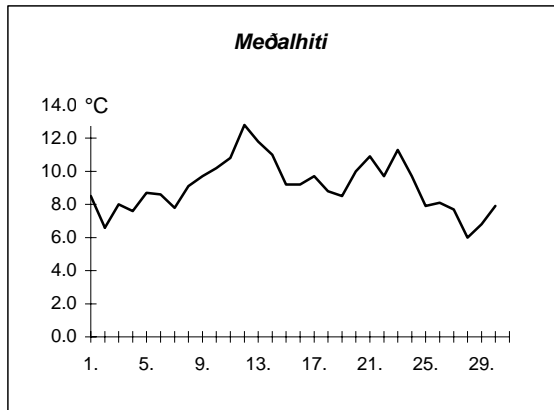
Dags	Meðalhiti (°C)	Hámark (°C)	Lágmark (°C)	Úrkoma (mm)	Úrkomutegund	Snjöldýpt (cm)	Snjöhula (0-4)	Sóliskín(klist)	Meðalvindur (m/s)	Mesti vindur (m/s)	Hviða (m/s)
1.	10.1	11.7	8.4	17.6	ri		0		14.1	21.1	
2.	9.0	11.9	7.3	17.7	ri		0		8.4	16.5	
3.	7.9	10.8	6.1	---			0		3.2	7.7	
4.	9.0	10.6	5.8	6.7	ri		0		6.8	12.4	
5.	9.1	10.7	7.1	20.8	ri		0		10.3	17.0	
6.	9.4	12.6	9.2	24.7	ri		0		9.8	18.0	
7.	6.9	10.7	4.0	---			0		3.5	9.3	
8.	7.6	11.7	4.0	0.0			0		3.0	4.6	
9.	9.2	13.2	2.7	---			0		2.5	5.7	
10.	14.0	19.7	10.0	0.1	ri		0		6.2	10.8	
11.	11.2	15.9	9.6	6.0	ri		0		3.0	7.7	
12.	11.4	14.2	9.4	1.0	ri		0		1.8	4.1	
13.	10.5	14.6	9.4	3.2	ri		0		2.3	5.1	
14.	10.2	12.9	8.1	0.0			0		2.3	4.6	
15.	11.0	16.0	9.3	---			0		3.1	10.8	
16.	8.9	15.3	5.5	0.4	ri		0		2.8	6.7	
17.	8.9	13.8	5.6	---			0		2.1	4.6	
18.	7.9	11.7	6.9	0.0			0		2.3	5.7	
19.	6.7	11.0	3.1	0.9	ri		0		2.8	5.7	
20.	9.1	12.9	6.6	1.3	ri		0		2.3	4.1	
21.	8.4	14.2	4.2	---			0		2.2	3.6	
22.	9.8	13.4	6.5	---			0		2.6	5.7	
23.	9.5	11.7	7.4	---			0		2.1	3.6	
24.	9.0	12.0	8.2	0.3	ri		0		2.5	4.6	
25.	7.4	10.7	5.5	6.4	ri		0		3.0	5.7	
26.	6.7	10.0	3.1	0.1	ri		0		2.6	5.7	
27.	7.7	10.5	5.3	0.9	ri		0		2.2	4.6	
28.	6.6	10.5	1.9	0.0			0		3.6	6.7	
29.	5.4	8.5	2.8	0.0			0		2.6	5.7	
30.	6.3	9.4	2.1	0.5	ri		0		2.3	4.6	



Meðalhiti	=	8.8 °C
Meðalhámarkshiti	=	12.4 °C
Meðallágmarkshiti	=	6.2 °C
Úrkomumagn	=	108.6 mm
Meðalvindhraði	=	4.0 m/s

Útgefandi : **Veðurstofa Íslands**
 Heimilisfang : **Bústaðavegur 9**
150 Reykjavík

Dags	Meðalhiti (°C)	Hámark (°C)	Lágmark (°C)	Úrkoma (mm)	Úrkomutegund	Snjódýpt (cm)	Snjöhula (0-4)	Sólskin(klist)	Meðalvindur (m/s)	Mesti vindur (m/s)	Hviða (m/s)
1.	8.5	11.7	7.7	19.0	ri		0		12.5	21.6	26.8
2.	6.6	9.5	4.8	16.3	ri		0		5.9	12.4	15.4
3.	8.0	13.1	3.8	4.1	ri		0		7.2	12.9	19.6
4.	7.6	10.5	6.4	14.5	ri		0		5.6	13.9	17.5
5.	8.7	10.5	5.6	21.7	ri		0		8.6	12.9	16.5
6.	8.6	11.6	8.0	0.6	ri		0		10.8	14.4	19.0
7.	7.8	12.3	4.3	---			0		4.1	7.2	9.3
8.	9.1	13.1	6.7	---			0		6.0	8.2	10.3
9.	9.7	13.8	7.9	---			0		6.1	10.3	13.4
10.	10.2	14.3	8.2	1.4	ri		0		3.7	9.3	11.3
11.	10.8	13.9	9.0	15.2	ri		0		3.9	6.2	8.8
12.	12.8	15.6	9.5	0.1	ri		0		8.6	12.4	17.5
13.	11.8	14.9	11.0	0.7	ri		0		9.5	13.9	19.6
14.	11.0	13.3	10.6	0.3	ri		0		7.5	11.3	14.4
15.	9.2	11.8	8.6	3.0	ri		0		4.9	8.2	10.3
16.	9.2	11.2	7.7	0.7	ri		0		4.3	7.2	8.8
17.	9.7	12.6	8.3	0.2	ri		0		2.5	6.7	8.8
18.	8.8	11.5	8.1	2.8	ri		0		3.5	7.7	10.3
19.	8.5	12.3	5.5	1.2	ri		0		4.6	11.3	14.9
20.	10.0	12.2	8.8	4.2	ri		0		3.6	7.7	10.3
21.	10.9	13.9	10.0	0.8	ri		0		6.4	9.3	13.4
22.	9.7	12.0	8.4	3.9	ri		0		5.8	12.9	17.5
23.	11.3	13.7	9.1	5.4	ri		0		7.4	13.4	18.0
24.	9.7	13.6	8.1	11.9	ri		0		6.3	10.8	13.9
25.	7.9	12.2	6.1	4.7	ri		0		6.5	10.8	13.9
26.	8.1	11.2	6.5	1.3	ri		0		5.6	9.8	11.8
27.	7.7	12.2	6.8	4.0	ri		0		5.1	8.2	12.4
28.	6.0	8.9	4.6	0.1	ri		0		3.0	6.2	9.3
29.	6.8	8.8	5.5	6.5	ri		0		3.8	8.8	12.9
30.	7.9	10.6	4.8	0.4	ri		0		7.9	16.5	21.6



Meðalhiti	=	9.1 °C
Frávik frá meðaltali 1931-60	=	0.7 °C
Meðalhámarkshiti	=	12.2 °C
Meðallágmarkshiti	=	7.4 °C
Úrkomumagn	=	145.0 mm
Hlutfall úrkomu af meðaltali 1931-60	=	126.0 %
Meðalvindhraði	=	6.0 m/s