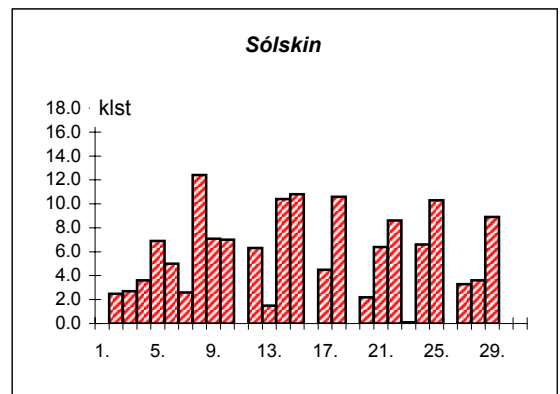
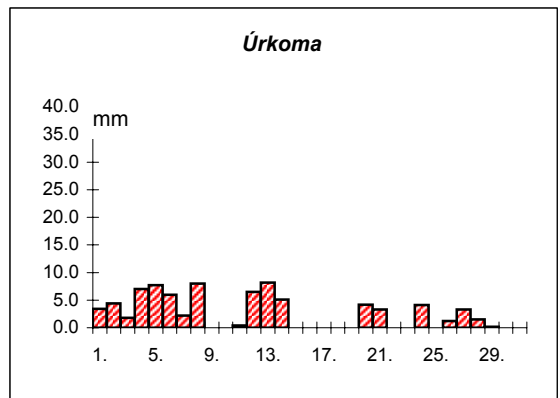
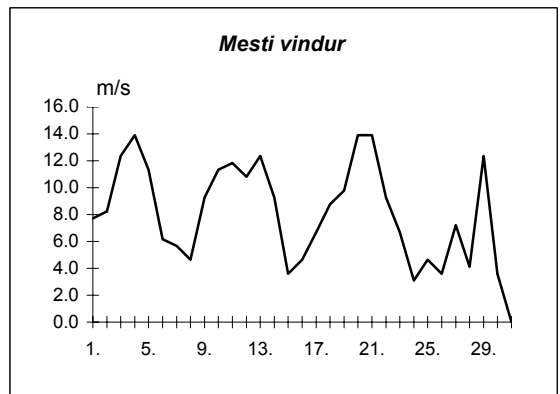
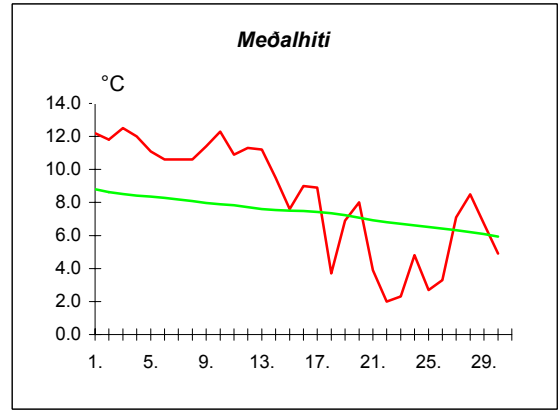
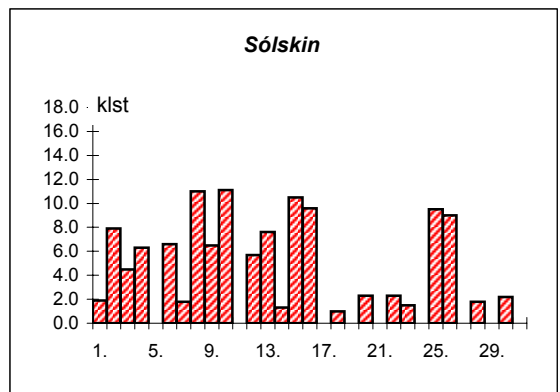
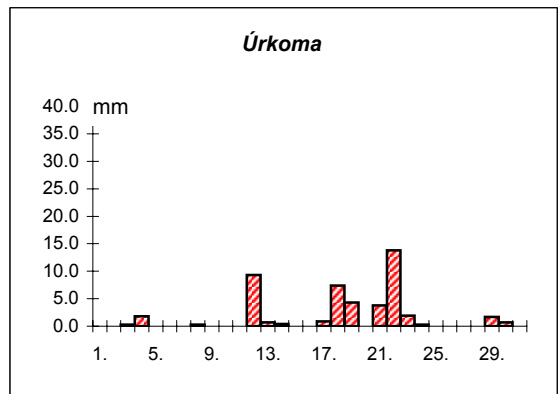
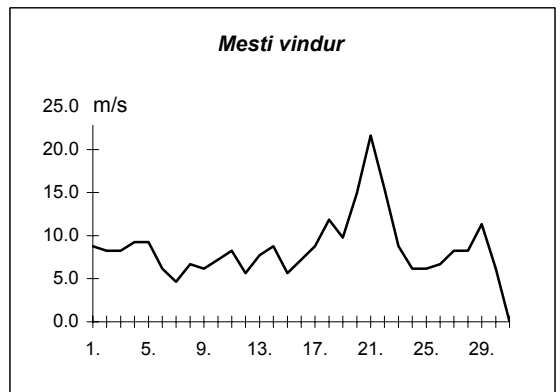
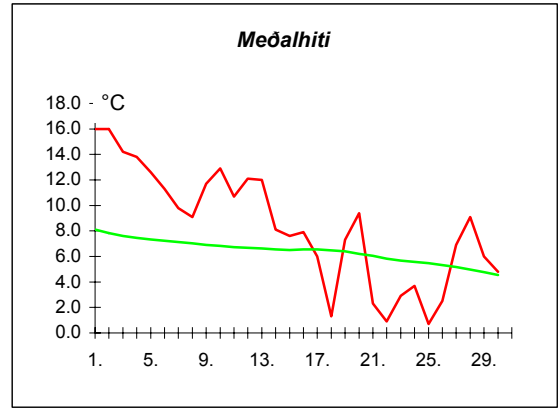


Dags	Meðalhiti (°C)	Hámark (°C)	Lágmark (°C)	Úrkoma (mm)	Úrkomutegund	Snjóþýpt (cm)	Snjóhula (0-4)	Sólskin(klst)	Meðalvindur (m/s)	Mesti vindur (m/s)	Hviða (m/s)
1.	12.2	13.6	9.3	3.4	ri		0	0.0	4.8	7.7	12.4
2.	11.8	13.2	10.5	4.4	sl		0	2.5	6.2	8.2	13.4
3.	12.5	14.0	10.1	1.8	sl		0	2.7	5.9	12.4	20.6
4.	12.0	14.0	10.8	7.0	ri		0	3.6	10.5	13.9	22.7
5.	11.1	12.8	10.0	7.7	ri		0	6.9	8.0	11.3	19.6
6.	10.6	13.2	9.0	6.0	ri		0	5.0	4.1	6.2	10.3
7.	10.6	13.2	8.7	2.2	ri		0	2.6	3.1	5.7	10.8
8.	10.6	13.7	7.6	8.0	ri		0	12.4	2.2	4.6	8.2
9.	11.4	15.0	6.7	---			0	7.1	3.0	9.3	9.3
10.	12.3	15.0	9.4	---			0	7.0	6.4	11.3	17.5
11.	10.9	13.4	10.0	0.4	ri		0	0.0	7.4	11.8	17.0
12.	11.3	14.2	8.8	6.5	ri		0	6.3	5.7	10.8	19.0
13.	11.2	13.0	9.6	8.2	ri		0	1.5	5.7	12.4	22.1
14.	9.5	12.0	9.5	5.1	ri		0	10.4	4.3	9.3	14.9
15.	7.6	12.3	3.0	---			0	10.8	1.1	3.6	5.1
16.	9.0	11.1	5.1	---			0	0.0	2.5	4.6	6.7
17.	8.9	13.5	6.8	0.0			0	4.5	2.6	6.7	10.3
18.	3.7	11.2	2.7	---			0	10.6	4.9	8.8	14.9
19.	6.9	9.5	0.5	---			0	0.0	5.5	9.8	16.0
20.	8.0	10.3	5.3	4.2	ri		0	2.2	11.0	13.9	21.1
21.	3.9	7.0	3.4	3.3	sl		0	6.4	9.8	13.9	26.3
22.	2.0	4.6	1.0	0.0			0	8.6	4.0	9.3	13.4
23.	2.3	5.8	-1.8	---			0	0.1	3.5	6.7	10.8
24.	4.8	8.6	2.1	4.1	ri		0	6.6	1.7	3.1	4.6
25.	2.7	8.2	-2.2	---			0	10.3	1.4	4.6	7.2
26.	3.3	6.0	0.0	1.2	ri		0	0.0	2.9	3.6	5.7
27.	7.1	9.8	3.8	3.3	ri		0	3.3	3.6	7.2	10.8
28.	8.5	10.4	7.9	1.5	ri		0	3.6	2.6	4.1	7.2
29.	6.7	9.3	5.8	0.2	ri		0	8.9	5.7	12.4	18.5
30.	4.9	7.3	1.2	---			0	0.0	1.9	3.6	5.1



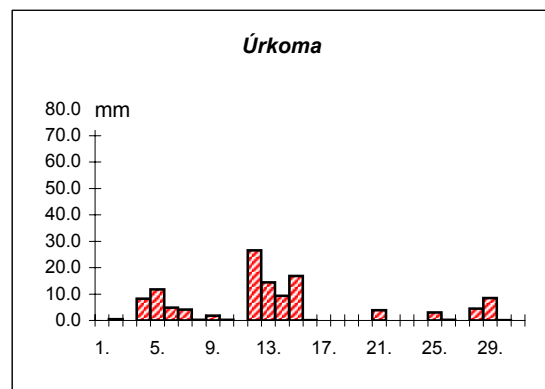
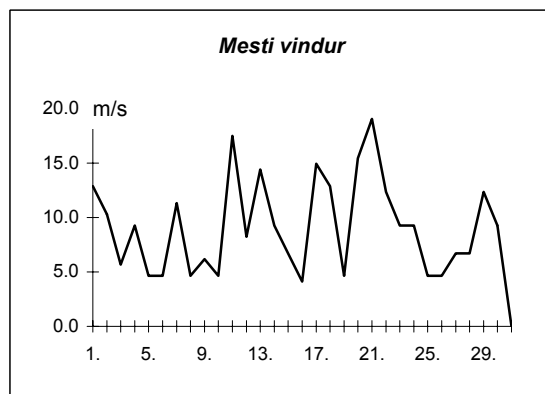
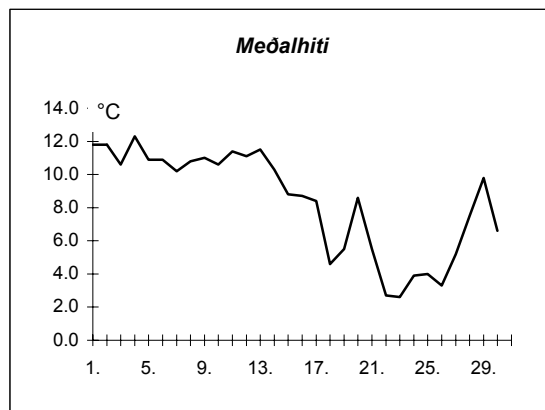
Meðalhiti	=	8.3 °C
Frávik frá meðaltali 1931-60	=	-0.3 °C
Meðalhámarkshiti	=	11.2 °C
Meðallágmarkshiti	=	5.8 °C
Úrkomumagn	=	78.5 mm
Hlutfall úrkomu af meðaltali 1931-60	=	109.0 %
Meðalvindhraði	=	4.7 m/s
Sólskinsstundir	=	143.9 klst

Dags	Meðalhiti (°C)	Hámark (°C)	Lágmark (°C)	Úrkoma (mm)	Úrkomutegund	Snjódypt (cm)	Snjóhula (0-4)	Sólskin(klst)	Meðalvindur (m/s)	Mesti vindur (m/s)	Hviða (m/s)
1.	16.0	19.0	13.4	---			0	1.9	5.8	8.8	15.4
2.	16.0	18.4	14.9	---			0	7.9	6.1	8.2	18.5
3.	14.2	18.0	12.1	0.3	ri		0	4.5	4.7	8.2	13.4
4.	13.8	18.6	10.4	1.8	ri		0	6.3	4.1	9.3	16.5
5.	12.6	16.2	11.3	0.0			0	0.0	6.8	9.3	16.5
6.	11.3	15.0	9.2	---			0	6.6	4.4	6.2	11.3
7.	9.8	14.2	6.5	0.0			0	1.8	2.0	4.6	7.2
8.	9.1	15.0	3.7	0.3	ri		0	11.0	3.4	6.7	9.8
9.	11.7	15.6	8.0	---			0	6.5	3.1	6.2	10.3
10.	12.9	18.0	7.3	---			0	11.1	4.1	7.2	10.3
11.	10.7	17.3	7.2	---			0	0.0	3.2	8.2	14.9
12.	12.1	17.0	9.9	9.3	ri		0	5.7	3.6	5.7	8.8
13.	12.0	16.6	7.7	0.7	ri		0	7.6	4.3	7.7	14.4
14.	8.1	14.0	7.7	0.4	ri		0	1.3	6.5	8.8	15.4
15.	7.6	13.0	3.4	0.0			0	10.5	2.8	5.7	7.7
16.	7.9	12.7	2.3	---			0	9.6	3.1	7.2	10.3
17.	6.0	11.7	4.8	0.9	ri		0	0.0	4.4	8.8	15.4
18.	1.3	5.1	0.3	7.4	sl	3	4	1.0	6.3	11.8	18.0
19.	7.3	10.6	-1.5	4.3	sl		2	0.0	5.5	9.8	16.5
20.	9.4	13.2	8.4	0.0			0	2.3	7.2	14.9	27.8
21.	2.3	9.6	0.9	3.8	ri		0	0.0	12.3	21.6	30.9
22.	0.9	3.0	-0.8	13.8	sl		2	2.3	8.0	15.4	22.7
23.	2.9	6.0	-1.4	1.9	sn		0	1.5	4.9	8.8	13.4
24.	3.7	5.5	3.4	0.3	ri		0	0.0	3.1	6.2	9.3
25.	0.7	4.8	-2.5	0.0			0	9.5	2.8	6.2	9.8
26.	2.5	6.5	-2.7	0.0			0	9.0	3.0	6.7	9.3
27.	6.9	10.7	2.3	---			0	0.0	6.2	8.2	14.4
28.	9.1	13.1	7.1	---			0	1.8	3.3	8.2	13.4
29.	6.0	8.5	5.1	1.7	ri		0	0.0	8.2	11.3	18.0
30.	4.8	8.6	1.7	0.7	ri		0	2.2	2.6	6.2	9.3



Meðalhiti	=	8.3 °C
Frávik frá meðaltali 1931-60	=	0.5 °C
Meðalhámarkshiti	=	12.5 °C
Meðallágmarkshiti	=	5.3 °C
Úrkomumagn	=	47.6 mm
Hlutfall úrkomu af meðaltali 1931-60	=	103.0 %
Meðalvindhraði	=	4.8 m/s
Sólskinsstundir	=	121.9 klst

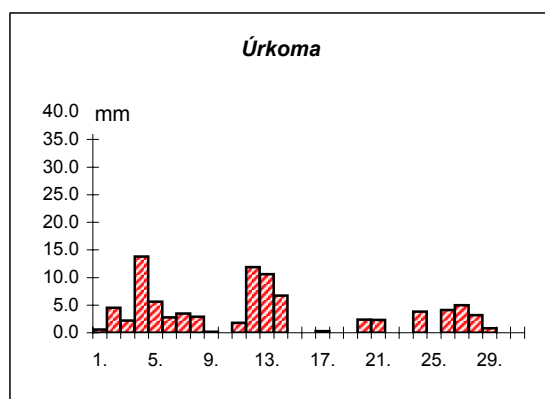
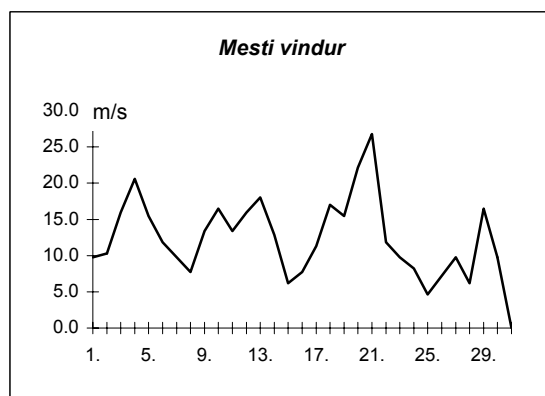
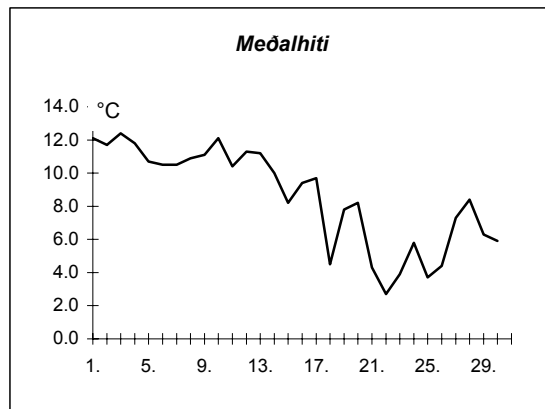
Dags	Meðalhiti (°C)	Hámark (°C)	Lágmark (°C)	Úrkoma (mm)	Úrkomutegund	Snjódypt (cm)	Snjóhula (0-4)	Sólskin(klist)	Meðalvindur (m/s)	Mesti vindur (m/s)	Hviða (m/s)
1.	11.8	17.3	7.6	---			0		2.8	12.9	
2.	11.8	14.5	11.5	0.5	ri		0		5.2	10.3	
3.	10.6	14.2	6.4	0.0			0		3.0	5.7	
4.	12.3	14.6	9.9	8.3	ri		0		5.7	9.3	
5.	10.9	13.1	10.0	11.7	ri		0		3.1	4.6	
6.	10.9	13.2	8.5	4.9	ri		0		2.6	4.6	
7.	10.2	13.3	9.9	4.1	ri		0		4.8	11.3	
8.	10.8	15.9	6.1	0.2	ri		0		2.2	4.6	
9.	11.0	15.2	6.8	1.8	ri		0		2.5	6.2	
10.	10.6	14.4	7.9	0.3	ri		0		2.2	4.6	
11.	11.4	13.6	8.8	0.0			0		7.9	17.5	
12.	11.1	13.8	9.7	26.6	ri		0		3.7	8.2	
13.	11.5	13.8	9.8	14.4	ri		0		7.4	14.4	
14.	10.3	14.0	9.4	9.3	ri		0		4.5	9.3	
15.	8.8	12.4	6.3	16.9	ri		0		2.5	6.7	
16.	8.7	13.1	3.5	0.1	ri		0		2.6	4.1	
17.	8.4	11.2	7.1	0.0			0		7.2	14.9	
18.	4.6	8.6	3.5	0.0			0		7.2	12.9	
19.	5.5	9.1	-0.6	---			0		1.4	4.6	
20.	8.6	11.0	6.3	---			0		9.0	15.4	
21.	5.5	11.1	2.9	3.9	ri		0		7.3	19.0	
22.	2.7	7.4	1.1	0.0			0		6.9	12.4	
23.	2.6	7.2	-2.7	---			0		2.5	9.3	
24.	3.9	7.4	1.2	---			0		4.1	9.3	
25.	4.0	7.9	0.6	3.0	ri		0		2.5	4.6	
26.	3.3	6.4	0.0	0.2	ri		0		1.4	4.6	
27.	5.2	9.9	-0.8	---			0		2.3	6.7	
28.	7.5	9.6	4.6	4.5	ri		0		2.5	6.7	
29.	9.8	13.6	6.1	8.5	ri		0		6.2	12.4	
30.	6.6	11.6	5.9	0.1	ri		0		2.5	9.3	



Meðalhiti	=	8.4 °C
Meðalhámarkshiti	=	12.0 °C
Meðallágmarkshiti	=	5.6 °C
Úrkomumagn	=	119.3 mm
Meðalvindhraði	=	4.2 m/s

Útgefandi : **Veðurstofa Íslands**  
 Heimilisfang : **Bústaðavegur 9**  
**150 Reykjavík**

Dags	Meðalhiti (°C)	Hámark (°C)	Lágmark (°C)	Úrkoma (mm)	Úrkomutegund	Snjódypt (cm)	Snjóhula (0-4)	Sólskin(klist)	Meðalvindur (m/s)	Mesti vindur (m/s)	Hviða (m/s)
1.	12.1	14.0	10.5	0.6	ri		0		6.8	9.8	13.4
2.	11.7	13.7	10.3	4.5	ri		0		7.9	10.3	14.4
3.	12.4	14.5	10.3	2.2	ri		0		9.0	16.0	21.1
4.	11.8	13.9	10.8	13.8	sl		0		13.2	20.6	27.8
5.	10.7	12.9	9.9	5.6	ri		0		11.0	15.4	20.6
6.	10.5	13.0	8.3	2.8	ri		0		6.6	11.8	16.0
7.	10.5	12.5	9.5	3.5	ri		0		4.8	9.8	12.4
8.	10.9	14.2	8.8	2.9	ri		0		3.9	7.7	11.3
9.	11.1	14.5	6.5	0.2	ri		0		6.1	13.4	18.5
10.	12.1	13.6	11.2	---			0		12.4	16.5	21.6
11.	10.4	13.4	9.8	1.8	ri		0		9.4	13.4	20.6
12.	11.3	13.7	9.1	11.9	ri		0		8.9	16.0	21.1
13.	11.2	13.1	9.6	10.6	ri		0		9.4	18.0	25.7
14.	10.0	12.8	9.9	6.7	ri		0		8.0	12.9	17.0
15.	8.2	11.8	4.6	---			0		2.8	6.2	8.8
16.	9.4	12.1	6.2	0.0			0		3.6	7.7	10.3
17.	9.7	13.2	8.4	0.3	ri		0		7.4	11.3	14.4
18.	4.5	12.3	3.1	---			0		8.8	17.0	19.0
19.	7.8	11.1	2.9	---			0		10.3	15.4	20.6
20.	8.2	12.8	3.3	2.4	ri		0		16.9	22.1	26.8
21.	4.3	8.3	3.6	2.3	ri		0		15.1	26.8	27.8
22.	2.7	6.9	1.9	0.0			0		5.7	11.8	15.4
23.	3.9	8.8	-0.4	0.0			0		6.0	9.8	13.9
24.	5.8	9.3	3.2	3.8	sl		0		4.2	8.2	10.8
25.	3.7	9.6	1.4	---			0		3.3	4.6	6.7
26.	4.4	8.0	1.0	4.1	ri		0		4.6	7.2	10.3
27.	7.3	10.5	4.5	5.0	ri		0		5.9	9.8	14.4
28.	8.4	11.0	2.9	3.2	ri		0		4.0	6.2	9.3
29.	6.3	11.2	4.7	0.8	ri		0		11.1	16.5	19.6
30.	5.9	9.1	3.3	---			0		4.3	9.8	12.4



Meðalhiti	=	8.6 °C
Frávik frá meðaltali 1931-60	=	0.2 °C
Meðalhámarkshiti	=	11.9 °C
Meðallágmarkshiti	=	6.3 °C
Úrkomumagn	=	89.0 mm
Hlutfall úrkomu af meðaltali 1931-60	=	77.0 %
Meðalvindhraði	=	7.7 m/s