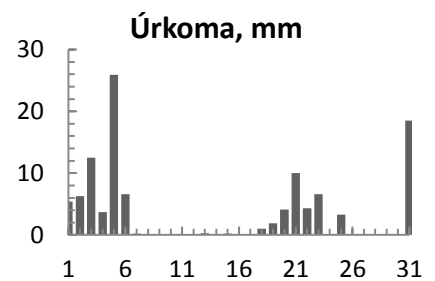
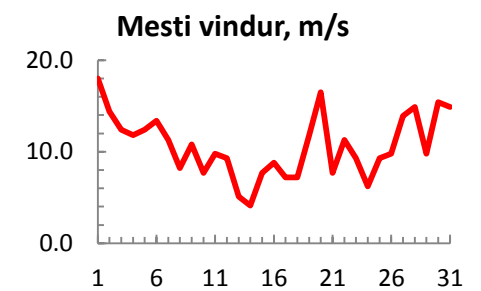
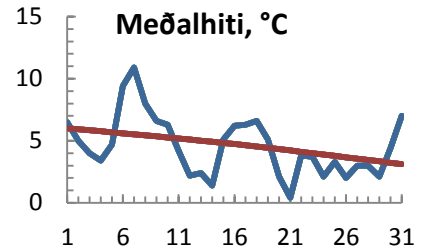


dagur	meðalhiti (°C)	Hámark (°C)	Lágmark (°C)	Úrkoma (mm)	Úrkomutegund	Snjódýpt (cm)	Snjöhula (0-4)	Sólskin (klst)	Meðalvindur (m/s)	Mesti vindur (m/s)	Hviða (m/s)
1	6.5	8.1	4.4	5.4	ri	0	0	0	12.7	18.0	23.2
2	5.0	7.8	3.0	6.3	ri	0	0	0	7.2	14.4	21.1
3	4.0	5.7	2.0	12.5	sl	0	0	0	6.6	12.4	17.0
4	3.4	5.5	0.7	3.7	sl	0	0	0	5.5	11.8	17.0
5	4.7	7.6	2.4	25.9	sl	0	0	0	7.4	12.4	17.5
6	9.4	12.0	3.6	6.6	ri	0	0	0	10.0	13.4	18.0
7	10.9	14.5	9.0	0.2	ri	0	0	0	4.5	11.3	12.9
8	8.0	12.2	6.7			0	0	0	5.0	8.2	10.3
9	6.6	9.2	4.5			0	0	0	5.2	10.8	13.4
10	6.3	8.5	3.7			0	0	0	5.0	7.7	9.8
11	4.2	7.5	3.2			0	0	0	7.0	9.8	11.8
12	2.2	4.6	0.9			0	0	0	5.8	9.3	11.3
13	2.4	5.8	1.4	0.3	ri	0	0	0	2.3	5.1	6.2
14	1.4	4.3	-1.1	0.1	ri	0	0	0	2.4	4.1	5.1
15	5.1	7.2	0.8	0.2	ri	0	0	0	4.5	7.7	9.8
16	6.2	8.7	4.5	0.0		0	0	0	5.1	8.8	10.3
17	6.3	7.9	3.7			0	0	0	4.4	7.2	9.3
18	6.6	8.0	5.7	1.0	ri	0	0	0	4.2	7.2	8.8
19	5.1	7.5	5.0	1.9	ri	0	0	0	6.8	11.8	16.5
20	2.1	5.6	0.9	4.1	sl	0	0	0	8.8	16.5	21.1
21	0.4	1.4	-0.7	10.0	sl	3	4	0	3.6	7.7	10.8
22	3.8	6.0	-0.3	4.3	sl	0	2	0	5.0	11.3	13.9
23	3.7	6.3	3.0	6.6	ri	0	0	0	3.6	9.3	11.3
24	2.1	4.9	1.6	0.1	ri	0	0	0	2.8	6.2	8.8
25	3.3	5.1	1.3	3.3	sl	0	0	0	5.4	9.3	12.4
26	2.0	4.7	0.9			0	0	0	6.3	9.8	12.9
27	3.0	4.9	1.1			0	0	0	8.0	13.9	16.5
28	3.0	4.0	2.5	0.1	sl	0	0	0	11.1	14.9	19.0
29	2.1	3.5	0.8			0	0	0	5.6	9.8	12.4
30	4.4	6.3	2.0	0.0		0	0	0	9.2	15.4	19.6
31	7.0	9.3	4.5	18.5	ri	0	0	0	8.7	14.9	19.6



Meðalhiti (°C)	4.6
Frávik frá meðaltali 1961 - 1990 (°C)	-0.1
Meðalhámarkshiti (°C)	6.9
Meðallágmarkshiti (°C)	2.6
Úrkomumagn (mm)	111.1
Hlutfall úrkomu af meðaltali 1961-1990 (%)	96.4
Meðalvindhraði (m/s)	6.1