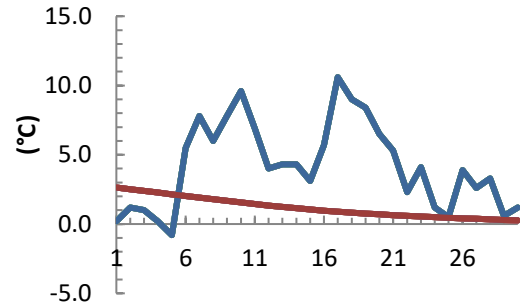
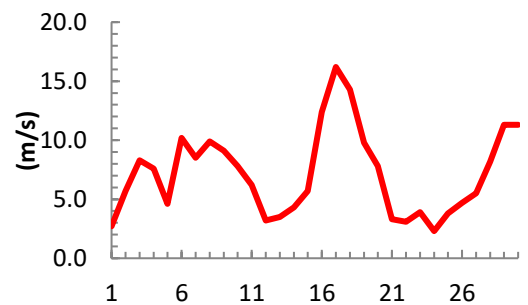
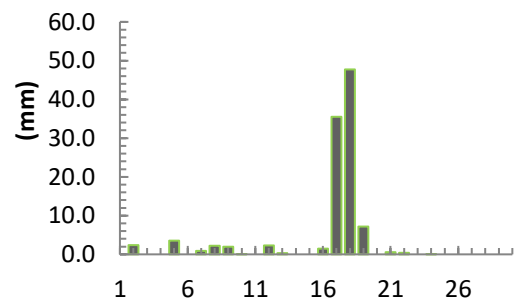


dagur	meðalhiti (°C)	Hámark (°C)	Lágmark (°C)	Úrkoma (mm)	Úrkomutegund	Snjódýpt (cm)	Snjöhula (0-4)	Sólskin (klst)	Meðalvindur (m/s)	Mesti vindur (m/s)	Hviða (m/s)
1	0.2	4.2	-1.9	0.0		0	0	1.7	1.5	2.7	4.1
2	1.2	3.2	-2.2	2.4	sl	0	0	2.9	3.1	5.7	9.3
3	1.0	3.5	0.1	0.0		0	0	1.0	6.0	8.3	17.4
4	0.2	1.8	-1.8	0.0		0	0	2.6	2.4	7.6	16.3
5	-0.8	0.8	-2.4	3.5	sn	3	4	2.1	2.4	4.6	9.2
6	5.5	7.4	-1.0	0.0		0	2	0.0	7.1	10.2	18.0
7	7.8	9.9	5.4	0.9	ri	0	0	1.3	3.7	8.5	16.1
8	6.0	9.5	4.0	2.2	ri	0	0	0.0	4.2	9.9	16.5
9	7.8	8.4	5.5	2.0	ri	0	0	0.9	5.4	9.1	16.2
10	9.6	10.9	7.6	0.1	ri	0	0	0.1	4.7	7.8	16.0
11	6.9	10.2	6.0	0.0		0	0	2.7	1.9	6.2	10.8
12	4.0	7.0	1.8	2.3	ri	0	0	5.5	1.1	3.2	5.2
13	4.3	5.6	3.1	0.3	ri	0	0	3.2	2.2	3.5	6.2
14	4.3	5.6	2.7	0.0		0	0	1.7	2.2	4.3	7.1
15	3.1	5.7	2.9	0.0		0	0	0.0	1.1	5.7	9.8
16	5.7	9.9	-0.1	1.5	ri	0	0	0.0	7.1	12.4	23.6
17	10.6	11.5	9.5	35.5	ri	0	0	0.0	12.3	16.2	25.2
18	9.0	10.6	7.8	47.7	ri	0	0	0.0	6.3	14.3	23.7
19	8.4	9.6	7.7	7.2	ri	0	0	0.0	6.3	9.8	15.7
20	6.5	8.9	4.2	0.0		0	0	0.0	3.6	7.8	12.6
21	5.3	7.9	5.1	0.6	ri	0	0	0.0	1.7	3.3	5.2
22	2.3	5.3	0.1	0.4	ri	0	0	4.6	1.4	3.1	5.6
23	4.1	5.1	0.0	0.0		0	0	0.4	2.0	3.9	6.1
24	1.2	4.9	-0.1	0.1	ri	0	0	4.2	0.4	2.3	3.9
25	0.5	2.3	-2.0	0.0		0	0	3.8	2.4	3.8	6.8
26	3.9	4.6	0.5	0.0		0	0	0.0	3.0	4.7	8.5
27	2.6	4.9	1.4	0.0		0	0	1.0	3.5	5.5	9.7
28	3.3	5.5	1.4	0.0		0	0	0.0	3.7	8.2	17.0
29	0.6	3.2	0.1	0.0		0	0	0.0	8.3	11.3	21.4
30	1.2	1.9	-0.3	0.0		0	0	0.0	5.1	11.3	22.4

Meðalhiti (°C)	4.2
Frávik frá meðaltali 1961 - 1990 (°C)	3.1
Meðalhámarkshiti (°C)	6.3
Meðallágmarkshiti (°C)	2.2
Úrkomumagn (mm)	106.7
Hlutfall úrkomu af meðaltali 1961-1990 (%)	147.0
Meðalvindhraði (m/s)	3.9
Sólskinsstundir (klst)	39.7

**Meðalhiti**

**Mesti vindur**

**Úrkoma**

**Sólskin**
