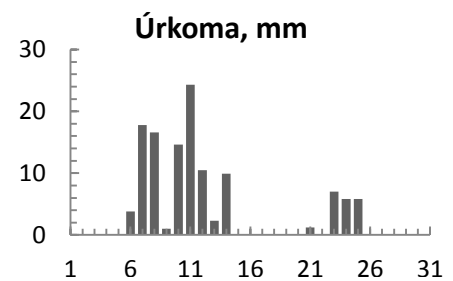
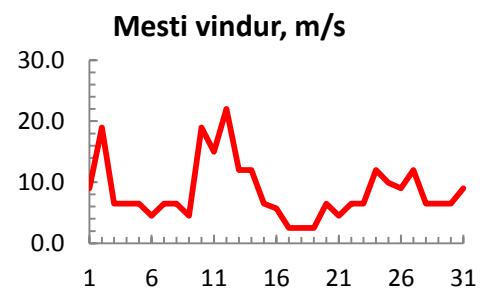
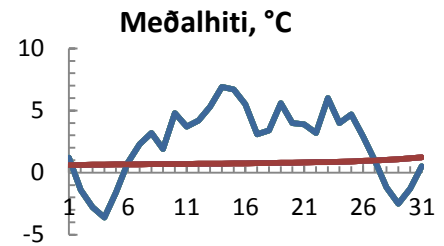


dagur	meðalhiti (°C)	Hámark (°C)	Lágmark (°C)	Úrkoma (mm)	Úrkomutegund	Snjódýpt (cm)	Snjóhula (0-4)	Sólskin (klst)	Meðalvindur (m/s)	Mesti vindur (m/s)	Hviða (m/s)
1	1.2	4.4	-1.6			0	0		3.8	9.0	
2	-1.4	2.8	-2.5			0	0		12.1	19.0	
3	-2.8	-0.5	-3.3			0	0		3.3	6.5	
4	-3.6	-1.5	-6.5	0.1	sn	0	0		1.8	6.5	
5	-1.6	1.0	-3.6			0	0		3.5	6.5	
6	0.8	3.2	-2.5	3.8	sn	5	4		3.8	4.5	
7	2.3	3.4	1.5	17.8	sl	1	4		3.1	6.5	
8	3.2	5.5	1.4	16.6	sl	0	0		2.1	6.5	
9	1.9	6.2	-1.3	1.0	ri	0	0		1.6	4.5	
10	4.8	7.2	1.6	14.6	ri	0	0		9.8	19.0	
11	3.7	5.0	1.6	24.3	sl	0	0		9.1	15.0	
12	4.2	7.2	2.3	10.5	ri	0	0		15.4	22.0	
13	5.3	7.0	2.3	2.3	sl	0	0		5.5	12.0	
14	6.9	7.8	6.1	9.9	ri	0	0		6.1	12.0	
15	6.7	8.0	4.7	0.1	ri	0	0		4.5	6.5	
16	5.5	8.4	4.4			0	0		1.9	5.7	
17	3.1	8.0	-0.7			0	0		0.4	2.5	
18	3.4	7.4	0.1			0	0		1.3	2.5	
19	5.6	9.4	0.5			0	0		1.2	2.5	
20	4.0	8.4	1.9			0	0		2.4	6.5	
21	3.9	6.8	0.5	1.2	ri	0	0		1.9	4.5	
22	3.2	6.8	0.5			0	0		3.5	6.5	
23	6.0	8.5	3.4	7.0	ri	0	0		3.3	6.5	
24	4.0	7.0	0.7	5.8	ri	0	0		7.5	12.0	
25	4.7	8.2	2.5	5.8	sl	0	0		4.9	9.9	
26	2.9	6.2	1.3			0	0		6.5	9.0	
27	1.0	3.5	0.7			0	0		9.2	12.0	
28	-1.2	1.8	-2.6			0	0		5.8	6.5	
29	-2.5	0.5	-4.9			0	0		5.0	6.5	
30	-1.3	1.4	-3.5			0	0		2.6	6.5	
31	0.5	1.6	-2.5			0	0		4.8	9.0	



Meðalhiti (°C)	2.4
Frávik frá meðaltali 1961 - 1990 (°C)	1.2
Meðalhámarkshiti (°C)	5.2
Meðallágmarkshiti (°C)	0.1
Úrkomumagn (mm)	120.8
Hlutfall úrkomu af meðaltali 1961-1990 (%)	109.8
Meðalvindhraði (m/s)	4.8