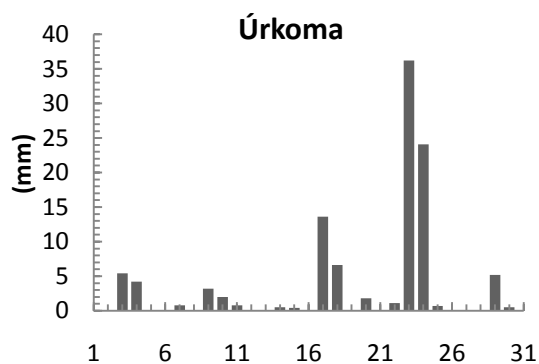
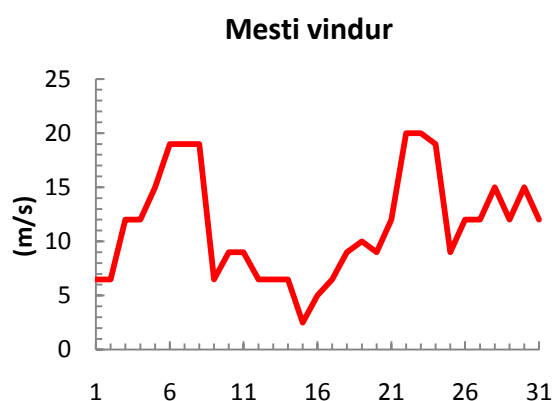
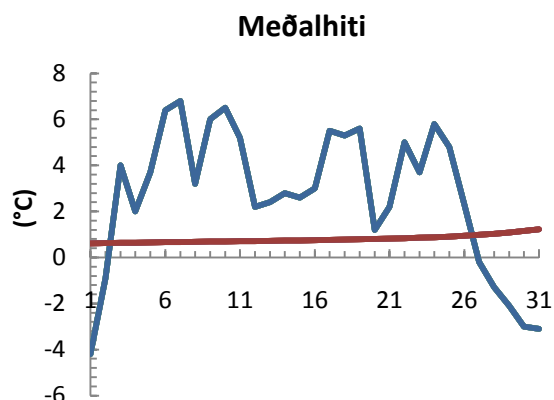


dagur	meðalhiti (°C)	Hámark (°C)	Lágmark (°C)	Úrkoma (mm)	Úrkomutegund	Snjódýpt (cm)	Snjóhula (0-4)	Sólskin (klst)	Meðalvindur (m/s)	Mesti vindur (m/s)	Hviða (m/s)
1	-4.2	1.0	-7.5			2	2		3.1	6.5	
2	-0.9	2.6	-7.3			2	2		4.0	6.5	
3	4.0	5.7	1.8	5.4	sl		0		7.8	12.0	
4	2.0	4.5	0.2	4.2	ri		0		4.2	12.0	
5	3.7	5.9	-0.5				0		7.2	15.0	
6	6.4	7.9	4.6				0		16.0	19.0	
7	6.8	8.2	5.6	0.8	ri		0		14.8	19.0	
8	3.2	8.1	1.6	0.0	ri		0		2.4	19.0	
9	6.0	7.8	2.6	3.2	ri		0		3.2	6.5	
10	6.5	7.9	5.4	2.0	ri		0		6.4	9.0	
11	5.2	8.1	3.1	0.8	ri		0		2.9	9.0	
12	2.2	6.4	-0.2				0		1.6	6.5	
13	2.4	6.0	0.0				0		4.3	6.5	
14	2.8	6.6	0.0	0.5	sl		2		1.9	6.5	
15	2.6	5.4	1.2	0.4	ri		0		1.4	2.5	
16	3.0	4.6	0.0				0		3.0	5.0	
17	5.5	6.5	2.6	13.6	ri		0		3.4	6.5	
18	5.3	7.1	3.0	6.6	ri		0		3.9	9.0	
19	5.6	8.2	5.1	0.0	ri		0		8.5	10.0	
20	1.2	5.7	0.2	1.8	sl		2		4.1	9.0	
21	2.2	4.1	-0.5	0.0	sn		0		7.4	12.0	
22	5.0	6.6	2.5	1.1	ri		0		12.1	20.0	
23	3.7	6.5	2.0	36.2	ri		0		12.3	20.0	
24	5.8	9.2	2.8	24.1	ri		0		3.6	19.0	
25	4.8	8.5	4.6	0.7	ri		0		6.9	9.0	
26	2.3	5.4	1.8	0.0	ri		0		10.3	12.0	
27	-0.2	3.0	-2.0				0		10.8	12.0	
28	-1.3	2.4	-2.8				0		10.0	15.0	
29	-2.1	1.2	-3.4	5.2	sn	7	4		9.0	12.0	
30	-3.0	1.7	-5.9	0.5	sn	5	2		9.8	15.0	
31	-3.1	0.5	-5.1			2	2		5.6	12.0	



Meðalhiti (°C)	2.7
Frávik frá meðaltali 1961 - 1990 (°C)	2.7
Meðalhámarkshiti (°C)	5.6
Meðallágmarkshiti (°C)	0.5
Úrkomumagn (mm)	107.1
Hlutfall úrkomu af meðaltali 1961-1990 (%)	97.4
Meðalvindhraði (m/s)	6.5



