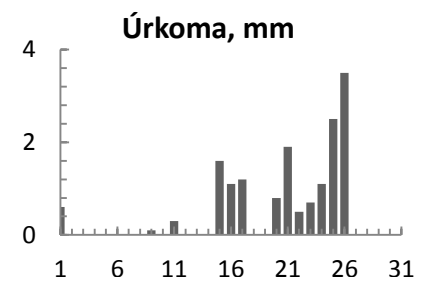
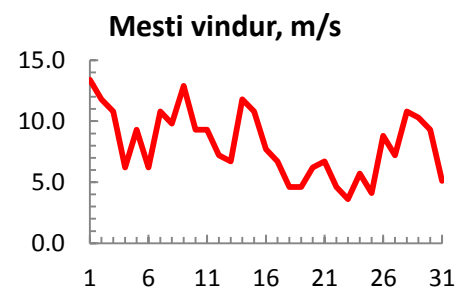
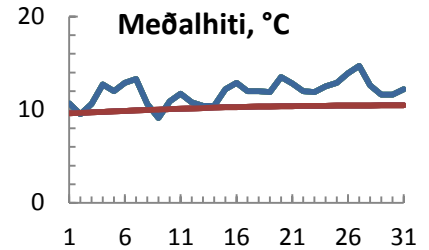


dagur	meðalhiti (°C)	Hámark (°C)	Lágmark (°C)	Úrkoma (mm)	Úrkomutegund	Snjódýpt (cm)	Snjóhula (0-4)	Sólskin (klst)	Meðalvindur (m/s)	Mesti vindur (m/s)	Hviða (m/s)
1	10.7	13.0	9.6	0.6	ri	0	0		8.9	13.4	16.0
2	9.5	12.2	8.2	0.0		0	0		9.3	11.8	14.9
3	10.6	15.1	7.6	0.0		0	0		7.3	10.8	12.9
4	12.7	17.0	8.1			0	0		4.3	6.2	9.3
5	12.0	16.8	7.6			0	0		3.8	9.3	11.8
6	12.9	16.5	7.9			0	0		3.7	6.2	9.3
7	13.3	16.2	10.0			0	0		5.9	10.8	15.4
8	10.6	16.5	8.5			0	0		5.7	9.8	12.4
9	9.1	12.7	6.6	0.1	ri	0	0		9.4	12.9	17.0
10	10.9	14.4	7.7	0.0		0	0		6.9	9.3	11.3
11	11.7	14.9	9.5	0.3	ri	0	0		6.1	9.3	11.3
12	10.8	15.0	8.2			0	0		4.6	7.2	10.8
13	10.4	13.9	6.8			0	0		4.4	6.7	9.3
14	10.4	12.6	9.1			0	0		6.9	11.8	16.0
15	12.2	14.9	9.5	1.6	ri	0	0		5.2	10.8	15.4
16	12.9	16.8	11.1	1.1	ri	0	0		3.5	7.7	9.8
17	12.0	14.3	9.0	1.2	ri	0	0		3.7	6.7	9.3
18	12.0	14.5	10.5			0	0		2.4	4.6	6.2
19	11.9	14.4	10.7			0	0		2.8	4.6	7.7
20	13.5	18.0	10.7	0.8	ri	0	0		3.3	6.2	7.2
21	12.8	18.3	11.5	1.9	ri	0	0		3.9	6.7	9.8
22	12.0	15.1	11.5	0.5	ri	0	0		3.2	4.6	6.2
23	11.9	13.7	10.7	0.7	ri	0	0		2.1	3.6	5.1
24	12.5	15.8	10.6	1.1	ri	0	0		3.0	5.7	7.2
25	12.9	14.7	11.6	2.5	ri	0	0		2.0	4.1	5.7
26	13.9	17.4	11.6	3.5	ri	0	0		5.4	8.8	11.8
27	14.7	19.6	11.3			0	0		5.7	7.2	12.4
28	12.6	18.2	10.9			0	0		7.1	10.8	13.9
29	11.6	15.3	9.7			0	0		6.7	10.3	14.4
30	11.6	15.4	8.1			0	0		7.2	9.3	13.9
31	12.2	15.3	9.8			0	0		3.3	5.1	9.3



Meðalhiti (°C)	11.9
Frávik frá meðaltali 1961 - 1990 (°C)	1.7
Meðalhámarkshiti (°C)	15.4
Meðallágmarkshiti (°C)	9.5
Úrkomumagn (mm)	15.9
Hlutfall úrkomu af meðaltali 1961-1990 (%)	24.2
Meðalvindhraði (m/s)	5.1