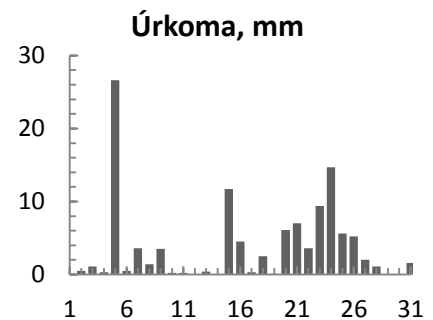
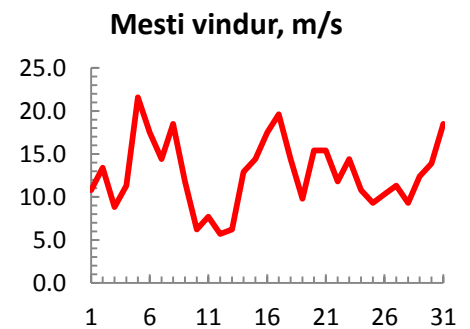
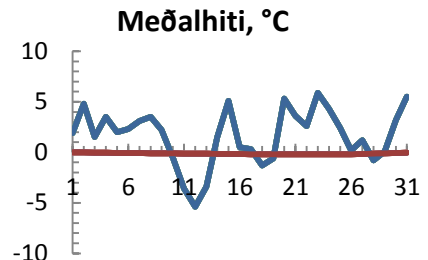


dagur	meðalhiti (°C)	Hámark (°C)	Lágmark (°C)	Úrkoma (mm)	Úrkomutegund	Snjóþýpt (cm)	Snjóhula (0-4)	Sólskin (klst)	Meðalvindur (m/s)	Mesti vindur (m/s)	Hviða (m/s)
1	1.9	4.3	-2.1			5	4		6.6	10.8	13.9
2	4.8	6.1	2.6	0.5	ri	0	0		10.4	13.4	17.5
3	1.5	5.8	0.5	1.1	ri	0	0		4.6	8.8	11.3
4	3.5	4.2	-0.6	0.3	ri	0	0		8.0	11.3	18.0
5	2.0	7.1	-1.7	26.6	ri	0	0		15.8	21.6	29.3
6	2.3	3.1	-1.7	0.5	sn	0	2		8.8	17.5	22.1
7	3.1	6.0	2.1	3.6	sl	0	0		8.7	14.4	19.6
8	3.5	5.2	1.3	1.4	ri	0	0		8.9	18.5	26.3
9	2.2	5.0	0.9	3.5	ri	0	0		6.5	11.8	15.4
10	-0.5	1.4	-2.2	0.2	sl	0	0		3.8	6.2	8.2
11	-3.6	-1.0	-4.5	0.2	sn	0	0		5.0	7.7	9.3
12	-5.4	-4.4	-6.7			0	0		4.0	5.7	7.7
13	-3.4	-0.3	-5.8	0.4	sn	0	2		3.5	6.2	8.2
14	1.5	3.8	-3.6	0.0		0	2		7.2	12.9	17.5
15	5.1	7.5	3.2	11.7	sl	0	0		10.4	14.4	19.0
16	0.5	4.4	-1.2	4.5	sl	0	2		12.9	17.5	23.7
17	0.3	1.4	-1.3	0.3	sn	0	2		6.4	19.6	25.2
18	-1.3	0.8	-2.5	2.5	sn	3	4		8.1	14.4	18.5
19	-0.6	1.0	-3.4	0.1	sn	3	4		5.0	9.8	11.8
20	5.3	7.3	1.0	6.1	sl	0	2		10.4	15.4	26.3
21	3.6	5.3	2.7	7.0	sl	0	0		10.2	15.4	20.6
22	2.6	4.0	1.4	3.6	ri	0	0		5.4	11.8	16.5
23	5.9	7.0	3.2	9.4	ri	0	0		9.8	14.4	20.1
24	4.3	6.5	3.7	14.7	ri	0	0		6.7	10.8	16.0
25	2.4	4.0	2.1	5.6	ri	0	0		3.9	9.3	15.4
26	0.2	3.1	-1.6	5.2	sl	2	4		5.0	10.3	12.9
27	1.2	2.5	0.1	2.0	sl	0	0		5.5	11.3	14.9
28	-0.8	1.4	-1.2	1.1	sl	0	0		5.9	9.3	12.4
29	0.1	2.4	-4.4	0.0		0	0		7.2	12.4	16.5
30	3.2	4.8	1.0	0.0		0	0		10.4	13.9	17.0
31	5.5	7.3	4.7	1.6	ri	0	0		9.5	18.5	25.2



Meðalhiti (°C)	1.6
Frávik frá meðaltali 1961 - 1990 (°C)	1.8
Meðalhámarkshiti (°C)	3.8
Meðallágmarkshiti (°C)	-0.5
Úrkomumagn (mm)	113.7
Hlutfall úrkomu af meðaltali 1961-1990 (%)	115.7
Meðalvindhraði (m/s)	7.6