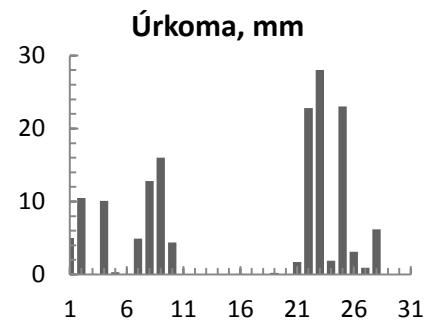
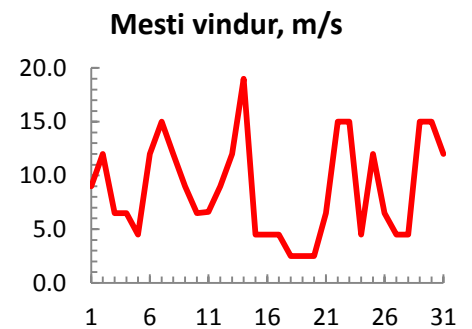
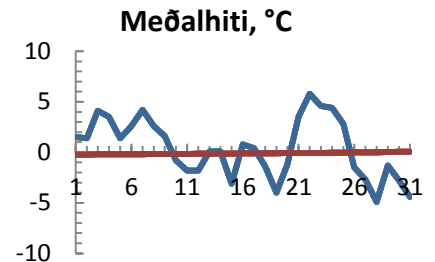


dagur	meðalhiti (°C)	Hámark (°C)	Lágmark (°C)	Úrkoma (mm)	Úrkomutegund	Snjódýpt (cm)	Snjóhula (0-4)	Sólskin (klst)	Meðalvindur (m/s)	Mesti vindur (m/s)	Hviða (m/s)
1	1.5	5.8	-0.2	5.0	sl	0	0		4.8	9.0	
2	1.4	4.0	-0.2	10.5	sl	3	4		3.6	12.0	
3	4.1	5.4	-1.0	0.1	sn	3	4		4.2	6.5	
4	3.5	5.0	3.3	10.1	ri	0	0		4.8	6.5	
5	1.4	3.8	0.5	0.3	sl	0	0		2.5	4.5	
6	2.6	4.5	-0.5	0.1	sn	0	0		5.5	12.0	
7	4.2	6.2	3.3	4.9	ri	0	0		12.0	15.0	
8	2.6	3.5	1.3	12.8	sl	0	0		9.5	12.0	
9	1.6	3.0	0.5	16.0	sl	2	4		6.3	9.0	
10	-0.8	1.4	-1.1	4.4	sl	6	4		5.2	6.5	
11	-1.8	-0.6	-3.1			5	4		5.5	6.6	
12	-1.8	-1.4	-3.3			4	4		6.1	9.0	
13	0.1	0.6	-2.1			4	4		8.2	12.0	
14	0.1	1.5	-0.5			3	4		9.2	19.0	
15	-3.1	0.5	-4.7			3	4		2.8	4.5	
16	0.8	2.4	-4.5	0.1	sn	2	4		1.9	4.5	
17	0.4	1.8	-0.9			2	4		2.2	4.5	
18	-1.4	0.6	-1.5			2	4		1.5	2.5	
19	-4.0	-1.4	-4.9	0.2	sn	2	4		1.2	2.5	
20	-1.2	-0.2	-5.5			2	4		2.3	2.5	
21	3.5	5.2	-0.6	1.7	sl	2	4		3.0	6.5	
22	5.8	7.0	3.4	22.8	ri	0	0		5.7	15.0	
23	4.6	6.2	4.3	28.0	ri	0	0		10.9	15.0	
24	4.4	6.2	2.3	1.9	ri	0	0		1.8	4.5	
25	2.8	6.2	2.1	23.0	ri	0	0		7.5	12.0	
26	-1.5	3.0	-2.8	3.1	sl	4	4		1.9	6.5	
27	-2.7	-0.6	-4.2	0.9	sn	5	4		2.5	4.5	
28	-4.9	-2.5	-6.5	6.2	sn	12	4		2.2	4.5	
29	-1.3	-0.6	-4.9			8	4		9.2	15.0	
30	-2.8	-0.6	-3.6			8	4		12.4	15.0	
31	-4.4	-2.8	-5.1			5	4		6.5	12.0	



Meðalhiti (°C)	0.4
Frávik frá meðaltali 1961 - 1990 (°C)	0.4
Meðalhámarkshiti (°C)	2.4
Meðallágmarkshiti (°C)	-1.3
Úrkomumagn (mm)	152.1
Hlutfall úrkomu af meðaltali 1961-1990 (%)	115.8
Meðalvindhraði (m/s)	5.3