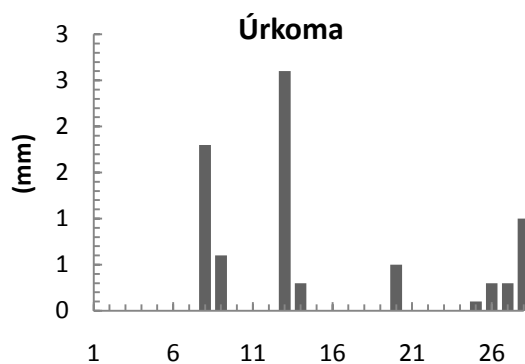
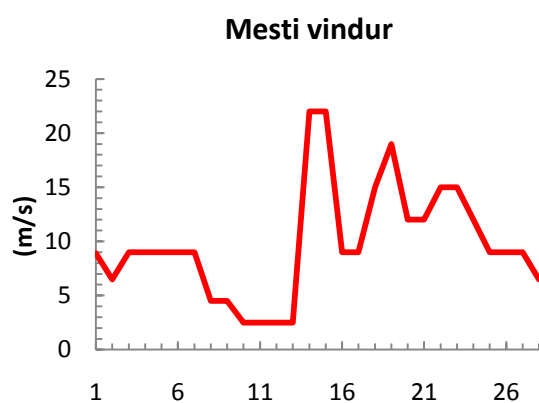
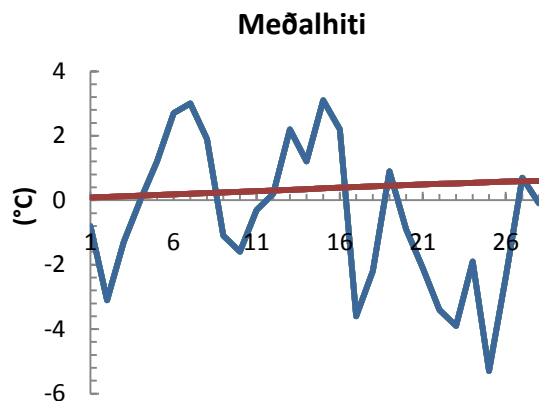


dagur	meðalhiti (°C)	Hámark (°C)	Lágmark (°C)	Úrkoma (mm)	Úrkomutegund	Snjódýpt (cm)	Snjóhula (0-4)	Sólskin (klst)	Meðalvindur (m/s)	Mesti vindur (m/s)	Hviða (m/s)
1	-0.8	2.0	-2.1	0.0		0	0.0	0.0	4.9	8.9	
2	-3.1	-0.8	-4.6			0	0.0	0.0	4.8	6.5	
3	-1.3	1.3	-4.6			0	0.0	0.0	6.4	9.0	
4	0.0	1.7	-1.8			0	0.0	0.0	6.6	9.0	
5	1.2	3.0	-1.0	0.0		0	0.0	0.0	6.1	9.0	
6	2.7	3.9	0.5			0	0.0	0.0	5.6	9.0	
7	3.0	4.0	2.2			0	0.0	0.0	2.9	9.0	
8	1.9	3.4	1.4	1.8	ri	0	0.0	0.0	2.4	4.5	
9	-1.1	2.5	-2.5	0.6	ri	0	0.0	0.0	1.6	4.5	
10	-1.6	1.2	-5.3	0.0		0	0.0	0.0	1.9	2.5	
11	-0.3	3.7	-3.0	0.0		0	0.0	0.0	1.8	2.5	
12	0.2	4.6	-5.0	0.0		0	0.0	0.0	1.8	2.5	
13	2.2	3.5	0.7	2.6	ri	0	0.0	0.0	1.6	2.5	
14	1.2	4.1	-0.9	0.3	ri	0	0.0	0.0	10.2	22.0	
15	3.1	6.0	-0.9	0.0		0	0.0	0.0	9.3	22.0	
16	2.2	5.0	0.9			0	0.0	0.0	5.1	9.0	
17	-3.6	2.4	-5.1			0	0.0	0.0	7.2	9.0	
18	-2.2	0.2	-5.9			0	0.0	0.0	9.6	15.0	
19	0.9	3.5	-2.4			0	0.0	0.0	11.1	19.0	
20	-0.9	2.8	-2.1	0.5	sl	0	0.0	0.0	10.9	12.0	
21	-2.1	0.8	-3.3			0	0.0	0.0	8.8	12.0	
22	-3.4	-1.5	-4.8			0	0.0	0.0	13.1	15.0	
23	-3.9	-0.4	-6.0			0	0.0	0.0	8.8	15.0	
24	-1.9	0.5	-7.8	0.0		0	2.0	0.0	6.6	12.0	
25	-5.3	-1.1	-6.6	0.1	sn	0	0.0	0.0	6.6	9.0	
26	-2.4	-0.6	-6.6	0.3	sn	3	2.0	0.0	6.4	9.0	
27	0.7	2.1	-1.5	0.3	sn	2	2.0	0.0	5.6	9.0	
28	-0.1	2.2	-0.5	1.0	sn	2	2.0	0.0	4.4	6.5	



Meðalhiti (°C)	-0.5
Frávik frá meðaltali 1961 - 1990 (°C)	-0.5
Meðalhámarkshiti (°C)	2.1
Meðallágmarkshiti (°C)	-2.8
Úrkomumagn (mm)	10.3
Hlutfall úrkomu af meðaltali 1961-1990 (%)	7.8
Meðalvindhraði (m/s)	6.1



