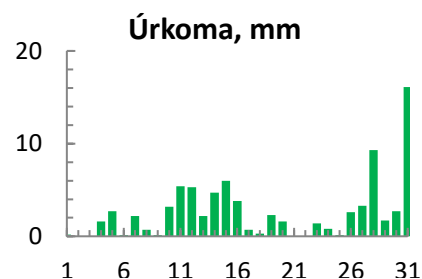
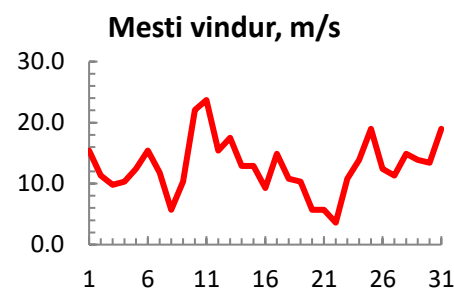
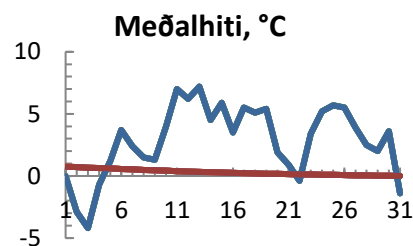


dagur	meðalhiti (°C)	Hámark (°C)	Lágmark (°C)	Úrkoma (mm)	Úrkomutegund	Snjódýpt (cm)	Snjóhula (0-4)	Sólskin (klst)	Meðalvindur (m/s)	Mesti vindur (m/s)	Hviða (m/s)
1	0.0	1.8	0.0	0.2	sn	0	0		12.1	15.4	20.1
2	-2.9	0.4	-3.4			0	0		8.6	11.3	14.9
3	-4.2	-3.0	-6.5			0	0		5.6	9.8	13.4
4	-0.7	0.4	-4.4	1.6	sn	2	4		4.4	10.3	13.9
5	1.2	2.0	-1.4	2.7	sl	6	4		8.4	12.4	16.0
6	3.7	5.5	1.7	0.1	ri	0	2		11.2	15.4	22.1
7	2.4	3.8	2.3	2.2	ri	0	0		3.9	11.8	14.9
8	1.5	2.6	1.0	0.7	ri	0	0		2.6	5.7	7.2
9	1.3	1.8	0.7	0.1	ri	0	0		5.7	10.3	15.4
10	4.0	5.3	1.3	3.2	sl	0	0		11.1	22.1	30.9
11	7.0	9.5	3.8	5.4	ri	0	0		13.0	23.7	33.5
12	6.2	7.5	4.5	5.3	sl	0	0		9.7	15.4	22.1
13	7.2	8.2	6.5	2.2	ri	0	0		11.1	17.5	23.7
14	4.5	8.0	3.0	4.7	ri	0	0		8.4	12.9	16.5
15	5.9	7.5	4.7	6.0	ri	0	0		8.9	12.9	16.5
16	3.5	5.8	2.1	3.8	ri	0	0		4.7	9.3	13.4
17	5.5	6.5	1.6	0.7	ri	0	0		9.7	14.9	19.6
18	5.1	6.7	4.8	0.3	ri	0	0		6.6	10.8	13.4
19	5.4	6.5	4.0	2.3	ri	0	0		6.8	10.3	14.9
20	1.9	5.6	0.6	1.6	ri	0	0		3.2	5.7	7.7
21	0.9	2.2	-0.4			0	0		2.8	5.7	8.8
22	-0.4	1.7	-2.3			0	0		1.8	3.6	4.6
23	3.4	5.7	0.2	1.4	ri	0	0		5.9	10.8	14.4
24	5.2	6.0	4.2	0.8	ri	0	0		9.4	13.9	20.1
25	5.7	8.3	3.2	0.1	ri	0	0		11.6	19.0	26.8
26	5.5	7.4	5.4	2.6	ri	0	0		7.0	12.4	17.0
27	3.9	7.0	2.1	3.3	ri	0	0		6.2	11.3	17.0
28	2.5	4.4	1.5	9.3	sl	0	0		10.0	14.9	21.1
29	2.0	3.5	1.6	1.7	sl	0	0		7.0	13.9	18.5
30	3.6	7.5	0.5	2.7	sl	0	2		9.7	13.4	17.0
31	-1.4	7.8	-3.5	16.1	sl	0	2		9.7	19.0	24.7



Meðalhiti (°C)	2.9
Frávik frá meðaltali 1961 - 1990 (°C)	2.6
Meðalhámarkshiti (°C)	5.0
Meðallágmarkshiti (°C)	1.3
Úrkomumagn (mm)	81.1
Hlutfall úrkomu af meðaltali 1961-1990 (%)	74.5
Meðalvindhraði (m/s)	7.6