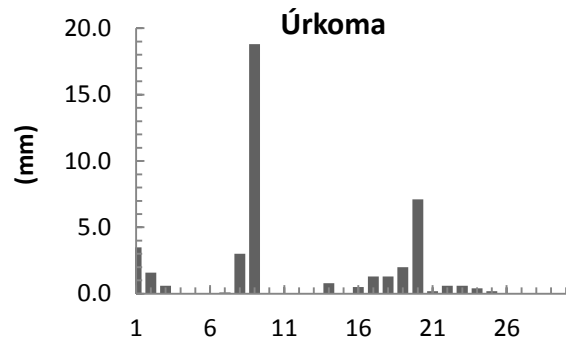
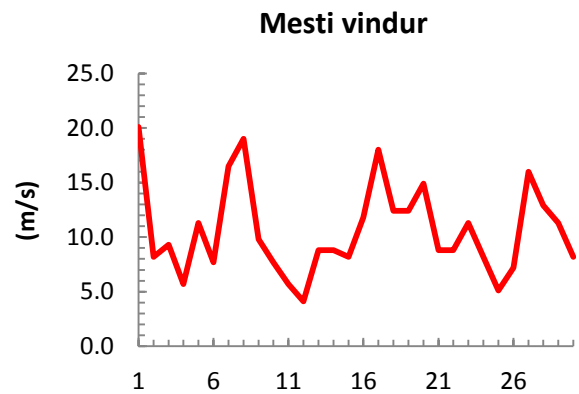
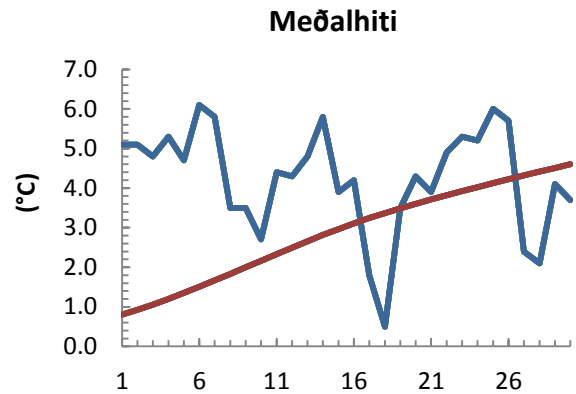


dagur	meðalhiti (°C)	Hámark (°C)	Lágmark (°C)	Úrkoma (mm)	Úrkomutegund	Snjódýpt (cm)	Snjóhula (0-4)	Sólskin (klst)	Meðalvindur (m/s)	Mesti vindur (m/s)	Hviða (m/s)
1	5.1	8.1	2.5	3.5	ri	0	0		9.2	20.1	27.8
2	5.1	7.6	3.3	1.6	ri	0	0		6.3	8.2	11.3
3	4.8	8.7	2.2	0.6	ri	0	0		5.7	9.3	11.8
4	5.3	8.9	2.7	0.0		0	0		3.1	5.7	7.2
5	4.7	7.1	2.3			0	0		7.2	11.3	14.4
6	6.1	9.3	4.1	0.0		0	0		3.9	7.7	10.3
7	5.8	8.5	2.2	0.1	ri	0	0		8.7	16.5	23.7
8	3.5	7.0	1.3	3.0	ri	0	0		6.9	19.0	27.3
9	3.5	7.1	1.3	18.8	sl	0	0		5.3	9.8	12.4
10	2.7	7.2	-0.2			0	0		4.1	7.7	9.8
11	4.4	5.5	0.7			0	0		3.5	5.7	7.7
12	4.3	8.1	1.8			0	0		2.2	4.1	5.7
13	4.8	7.5	1.6			0	0		4.7	8.8	10.8
14	5.8	10.3	3.3	0.8	ri	0	0		3.6	8.8	11.3
15	3.9	10.0	-1.6			0	0		4.4	8.2	10.3
16	4.2	6.9	3.9	0.5	ri	0	0		8.4	11.8	16.0
17	1.8	5.7	1.0	1.3	sl	0	0		11.4	18.0	22.1
18	0.5	2.8	-1.5	1.3	sl	0	0		7.2	12.4	15.4
19	3.5	6.7	0.2	2.0	sl	0	0		6.9	12.4	16.5
20	4.3	7.4	1.0	7.1	sl	0	0		8.8	14.9	19.6
21	3.9	6.6	0.6	0.2	sl	0	0		5.5	8.8	10.8
22	4.9	7.7	2.4	0.6	ri	0	0		5.7	8.8	11.3
23	5.3	6.5	4.7	0.6	ri	0	0		7.6	11.3	14.4
24	5.2	6.6	4.7	0.4	ri	0	0		5.9	8.2	10.3
25	6.0	9.7	1.9	0.2	ri	0	0		2.6	5.1	6.7
26	5.7	9.3	4.6			0	0		3.6	7.2	8.8
27	2.4	7.6	1.5			0	0		7.3	16.0	18.5
28	2.1	3.5	0.1			0	0		9.7	12.9	16.0
29	4.1	7.2	1.9			0	0		5.8	11.3	13.9
30	3.7	7.3	0.1			0	0		5.4	8.2	10.8



Meðalhiti (°C)	4.2
Frávik frá meðaltali 1961 - 1990 (°C)	1.3
Meðalhámarkshiti (°C)	7.4
Meðallágmarkshiti (°C)	1.8
Úrkomumagn (mm)	42.6
Hlutfall úrkomu af meðaltali 1961-1990 (%)	53.6
Meðalvindhraði (m/s)	6.0