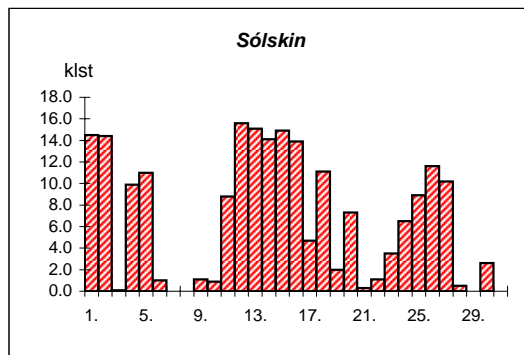
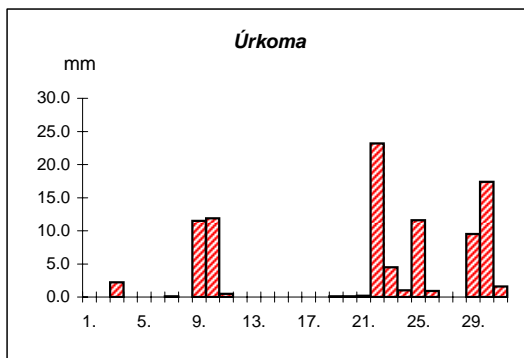
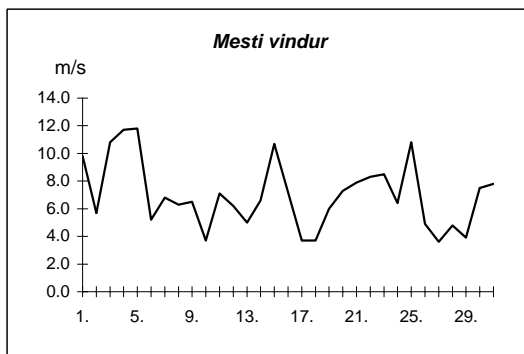
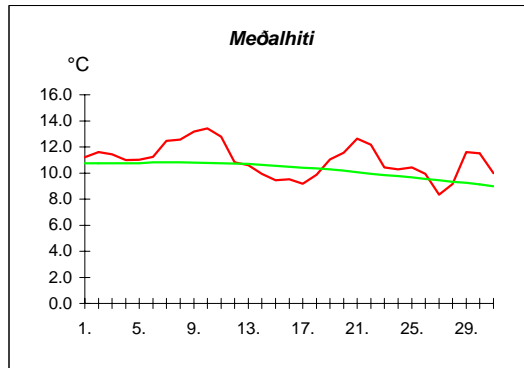


Reykjavík ágúst 2007

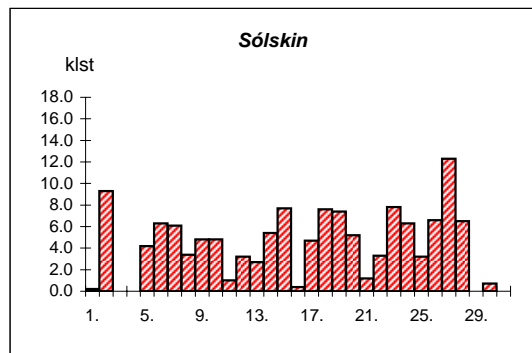
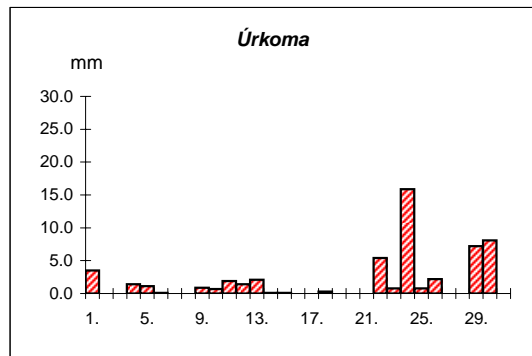
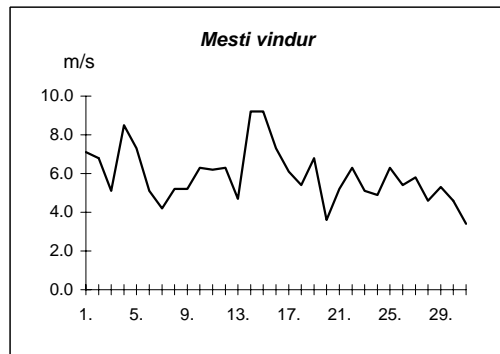
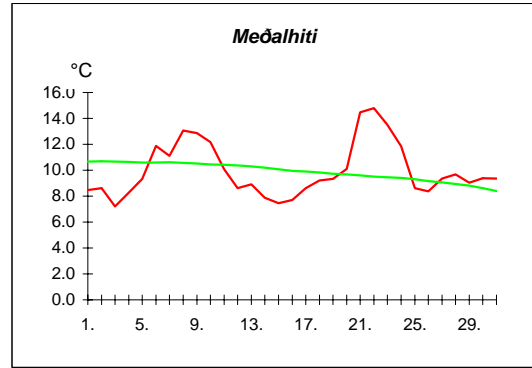
Dags	Meðalhiti (°C)	Hámark (°C)	Lágmark (°C)	Úrkoma (mm)	Úrkomutegund	Snjóþýpt (cm)	Snjóhula (0-4)	Sólskin(klst)	Meðalvindur (m/s)	Mesti vindur (m/s)	Hviða (m/s)
1.	11.2	14.2	9.2					14.5	4.2	9.8	11.1
2.	11.6	17.3	5.2					14.4	2.8	5.7	10.4
3.	11.4	17.0	8.5	2.2	ri			0.1	6.3	10.8	17.5
4.	11.0	14.3	7.5	0.0	ri			9.9	4.1	11.7	14.3
5.	11.0	15.5	8.5					11.0	4.6	11.8	15.8
6.	11.2	13.0	8.2					1.0	2.4	5.2	6.3
7.	12.5	14.5	11.0	0.1	ri			0.0	4.4	6.8	11.3
8.	12.6	13.7	11.0	0.0	ri			0.0	4.0	6.3	10.1
9.	13.2	16.2	11.7	11.5	ri			1.1	3.1	6.5	10.0
10.	13.4	17.2	11.9	11.9	ri			0.9	1.9	3.7	7.6
11.	12.8	17.1	10.7	0.5	ri			8.8	2.3	7.1	11.7
12.	10.8	15.5	6.9					15.6	2.4	6.2	10.9
13.	10.6	14.7	5.3					15.1	2.4	5.0	7.6
14.	10.0	14.6	5.5					14.1	2.6	6.6	10.6
15.	9.5	13.3	6.2					14.9	6.3	10.7	16.8
16.	9.5	12.2	6.5					13.9	4.3	7.2	11.7
17.	9.2	12.5	5.5					4.7	1.8	3.7	5.8
18.	9.9	13.0	5.9					11.1	1.7	3.7	5.8
19.	11.0	13.3	8.9	0.1	ri			2.0	3.0	6.0	8.5
20.	11.6	15.8	6.5	0.1	ri			7.3	3.1	7.3	10.6
21.	12.7	14.5	11.0	0.2	ri			0.3	3.9	7.9	12.6
22.	12.2	14.6	11.0	23.2	ri			1.1	4.0	8.3	8.8
23.	10.4	13.0	9.2	4.5	ri			3.5	4.8	8.5	12.2
24.	10.3	12.8	8.2	1.0	ri			6.5	3.3	6.4	9.9
25.	10.4	12.8	9.2	11.6	ri			8.9	4.2	10.8	11.9
26.	10.0	13.0	7.6	0.9	ri			11.6	2.6	4.9	6.9
27.	8.3	12.1	4.9					10.2	1.8	3.6	5.4
28.	9.2	12.1	5.8					0.5	2.0	4.8	7.6
29.	11.6	12.5	9.2	9.5	ri			0.0	2.3	3.9	6.1
30.	11.5	12.6	10.5	17.4	ri			2.6	4.3	7.5	10.6
31.	10.0	12.2	9.2	1.6	ri			0.0	3.6	7.8	12.0



Meðalhiti	=	11.0 °C
Frávik frá meðaltali 1961-90	=	0.7 °C
Meðalhámarkshiti	=	14.1 °C
Meðallágmarkshiti	=	8.3 °C
Úrkomumagn	=	96.3 mm
Hlutfall úrkomu af meðaltali 1961-90	=	155.3 %
Meðalvindhraði	=	3.4 m/s
Sólskinsstundir	=	205.6 klst

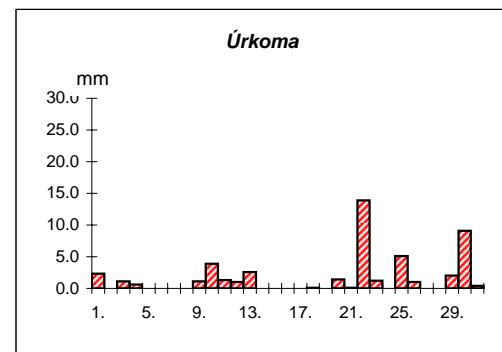
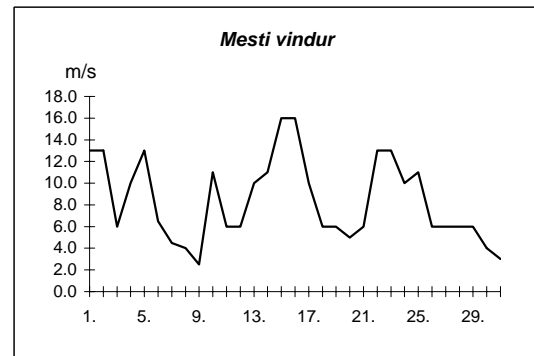
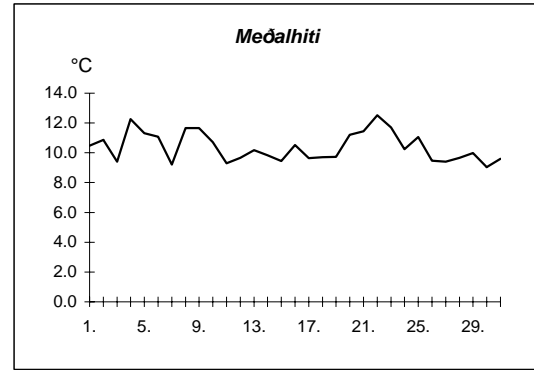
Akureyri ágúst 2007

Dags	Meðalhiti (°C)	Hámark (°C)	Lágmark (°C)	Úrkoma (mm)	Úrkomutegund	Snjóþýpt (cm)	Snjóhula (0-4)	Sólskin(klst)	Meðalvindur (m/s)	Mesti vindur (m/s)	Hviða (m/s)
1.	8.5	11.0	8.2	3.5	ri			0.2	4.7	7.1	11.0
2.	8.6	11.6	7.0	0.0	ri			9.3	3.9	6.8	10.7
3.	7.2	11.4	3.4					0.0	1.9	5.1	7.7
4.	8.3	9.7	7.3	1.4	ri			0.0	5.4	8.5	14.1
5.	9.3	12.1	6.8	1.1	ri			4.2	4.3	7.3	11.8
6.	11.9	15.2	8.9	0.1	ri			6.3	2.5	5.1	8.4
7.	11.1	16.2	4.9					6.1	1.7	4.2	6.1
8.	13.1	16.5	10.7					3.4	2.4	5.2	7.2
9.	12.9	16.5	9.8	0.9	ri			4.8	1.9	5.2	7.3
10.	12.2	17.0	11.2	0.7	ri			4.8	3.0	6.3	8.9
11.	10.1	13.5	9.2	1.9	ri			1.0	3.3	6.2	10.5
12.	8.6	12.0	8.0	1.4	ri			3.2	4.7	6.3	10.2
13.	8.9	11.9	6.6	2.1	ri			2.7	2.8	4.7	7.3
14.	7.9	10.9	7.1	0.1	ri			5.4	5.1	9.2	14.6
15.	7.5	9.9	6.0	0.1	ri			7.7	6.1	9.2	13.7
16.	7.7	9.6	6.8					0.4	4.1	7.3	11.1
17.	8.6	12.3	5.1					4.7	2.0	6.1	8.4
18.	9.2	11.2	8.1	0.3	ri			7.6	2.4	5.4	7.7
19.	9.3	13.6	5.6	0.0	ri			7.4	2.6	6.8	10.2
20.	10.1	13.2	7.6	0.0	ri			5.2	1.4	3.6	5.5
21.	14.5	18.5	10.5	0.0	ri			1.2	2.4	5.2	9.7
22.	14.8	16.5	11.3	5.4	ri			3.3	2.1	6.3	13.1
23.	13.5	17.0	11.1	0.8	ri			7.8	3.0	5.1	12.0
24.	11.9	15.9	8.2	15.9	ri			6.3	1.4	4.9	9.5
25.	8.6	13.6	8.4	0.8	ri			3.2	2.4	6.3	10.4
26.	8.4	14.4	3.8	2.2	ri			6.6	1.6	5.4	7.4
27.	9.3	15.5	2.5					12.3	1.7	5.8	7.9
28.	9.7	16.5	4.5					6.5	1.8	4.6	7.8
29.	9.0	12.0	8.3	7.2	ri			0.0	2.2	5.3	8.1
30.	9.4	11.5	8.0	8.1	ri			0.7	1.9	4.6	6.9
31.	9.3	11.0	8.6	0.0	ri			0.0	1.3	3.4	4.8



Meðalhiti	=	10.0 °C
Frávik frá meðaltali 1961-90	=	0.0 °C
Meðalhámarkshiti	=	13.5 °C
Meðallágmarkshiti	=	7.5 °C
Úrkomumagn	=	54.0 mm
Hlutfall úrkomu af meðaltali 1961-90	=	158.8 %
Meðalvindhraði	=	2.8 m/s
Sólskinsstundir	=	132.3 klst

Dags	Meðalhiti (°C)	Hámark (°C)	Lágmark (°C)	Úrkoma (mm)	Úrkomutegund	Snjódýpt (cm)	Snjöhula (0-4)	Sólskín(klst)	Meðalvindur (m/s)	Mesti vindur (m/s)
1.	10.5	12.9	8.7	2.3	ri				8.8	13.0
2.	10.9	14.6	8.2						7.3	13.0
3.	9.4	13.0	5.3	1.1	ri				2.5	6.0
4.	12.3	16.4	8.3	0.6	ri				5.9	10.0
5.	11.3	15.2	10.0						9.3	13.0
6.	11.1	18.4	4.5						2.8	6.5
7.	9.2	14.5	4.7						2.1	4.5
8.	11.7	15.4	8.0						2.1	4.0
9.	11.7	14.0	10.5	1.1	ri				1.9	2.5
10.	10.7	12.4	10.2	3.9	ri				5.1	11.0
11.	9.3	11.2	8.0	1.3	ri				2.4	6.0
12.	9.7	12.6	7.6	1.0	ri				3.1	6.0
13.	10.2	12.8	7.5	2.6	ri				6.3	10.0
14.	9.8	13.4	7.8	0.0	ri				9.1	11.0
15.	9.5	10.6	8.2						12.3	16.0
16.	10.5	13.3	8.0						11.9	16.0
17.	9.7	12.7	6.3						4.5	10.0
18.	9.7	12.7	8.0	0.1	ri				2.9	6.0
19.	9.7	12.8	6.1						2.6	6.0
20.	11.2	15.9	8.5	1.4	ri				2.4	5.0
21.	11.4	13.2	9.0	0.1	ri				2.9	6.0
22.	12.5	14.0	11.4	13.9	ri				7.7	13.0
23.	11.7	13.7	10.0	1.2	ri				9.3	13.0
24.	10.3	14.0	6.6						3.5	10.0
25.	11.0	15.5	7.2	5.1	ri				4.9	11.0
26.	9.5	13.7	7.8	1.0	ri				3.4	6.0
27.	9.4	13.6	4.6						3.1	6.0
28.	9.7	14.2	5.2						2.5	6.0
29.	10.0	14.5	7.7	2.0	ri				2.6	6.0
30.	9.0	12.1	7.2	9.1	ri				2.6	4.0
31.	9.6	12.1	7.2	0.4	ri				1.3	3.0

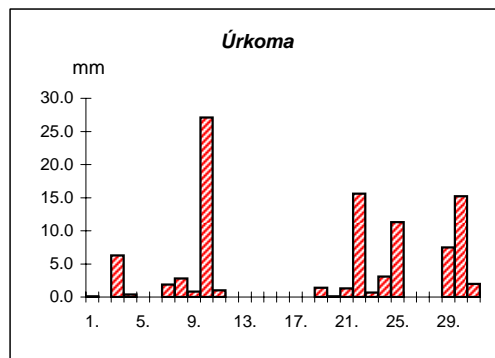
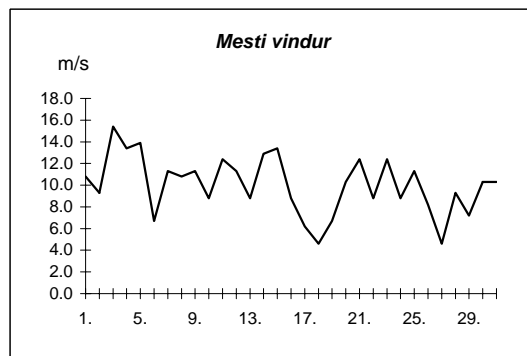
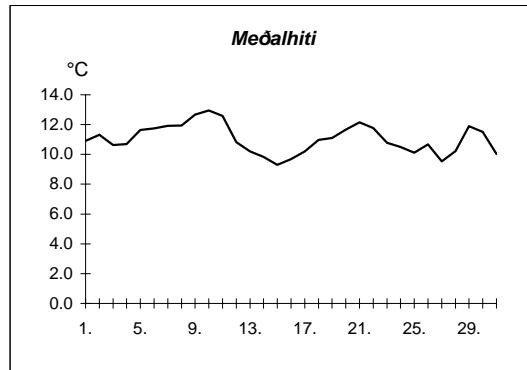


Meðalhiti	=	10.4 °C
Meðalhámarkshiti	=	13.7 °C
Meðallágmarkshiti	=	7.7 °C
Úrkomumagn	=	48.3 mm
Meðalvindhraði	=	4.8 m/s

Útgefandi : **Veðurstofa Íslands**
 Heimilisfang : **Bústaðavegur 9**
150 Reykjavík

Keflavík ágúst 2007

Dags	Meðalhiti (°C)	Hámark (°C)	Lágmark (°C)	Úrkoma (mm)	Úrkomutegund	Snjóþýpt (cm)	Snjóhula (0-4)	Sólskín(Klst)	Meðalvindur (m/s)	Mesti vindur (m/s)	Hviða (m/s)
1.	10.9	13.5	9.0	0.1	ri				8.1	10.8	14.9
2.	11.3	15.1	7.5						7.1	9.3	12.9
3.	10.6	14.8	8.1	6.3	ri				9.1	15.4	20.1
4.	10.7	12.7	9.6	0.4	ri				9.6	13.4	17.0
5.	11.6	15.7	8.5						9.5	13.9	17.0
6.	11.7	13.8	9.3						5.0	6.7	8.2
7.	11.9	15.0	11.0	1.9	ri				6.8	11.3	15.4
8.	11.9	13.5	11.5	2.8	ri				8.1	10.8	14.4
9.	12.7	14.9	11.6	0.8	ri				7.0	11.3	14.4
10.	13.0	15.5	11.5	27.1	ri				3.4	8.8	10.8
11.	12.6	15.4	10.2	1.0	ri				6.2	12.4	16.5
12.	10.8	15.2	9.5						8.2	11.3	13.9
13.	10.2	13.9	7.2						5.5	8.8	10.8
14.	9.8	13.5	7.7						9.3	12.9	16.5
15.	9.3	12.3	6.5						9.7	13.4	17.0
16.	9.7	13.0	6.9						6.4	8.8	11.3
17.	10.2	13.3	7.7						3.1	6.2	7.7
18.	11.0	13.8	6.9						2.3	4.6	7.7
19.	11.1	14.8	9.5	1.4	ri				4.9	6.7	8.2
20.	11.7	14.3	7.6	0.1	ri				4.7	10.3	14.4
21.	12.2	13.5	10.7	1.3	ri				6.5	12.4	17.0
22.	11.8	13.5	11.2	15.6	ri				6.8	8.8	12.4
23.	10.8	13.0	9.5	0.7	ri				7.7	12.4	15.4
24.	10.5	12.6	7.7	3.1	ri				4.8	8.8	11.3
25.	10.1	12.7	9.4	11.3	ri				6.8	11.3	14.4
26.	10.7	13.7	8.3	0.0	ri				4.7	8.2	11.3
27.	9.5	12.7	6.3						2.5	4.6	6.7
28.	10.2	12.1	8.5						4.8	9.3	12.9
29.	11.9	12.8	10.2	7.5	ri				4.7	7.2	10.3
30.	11.5	12.5	10.7	15.2	ri				7.3	10.3	13.9
31.	10.0	11.7	9.0	2.0	ri				6.0	10.3	14.9



Meðalhiti	=	11.0 °C
Frávik frá meðaltali 1961-90	=	1.0 °C
Meðalhámarkshiti	=	13.7 °C
Meðallágmarkshiti	=	9.0 °C
Úrkomumagn	=	98.6 mm
Hlutfall úrkomu af meðaltali 1961-90	=	106.3 %
Meðalvindhraði	=	6.3 m/s