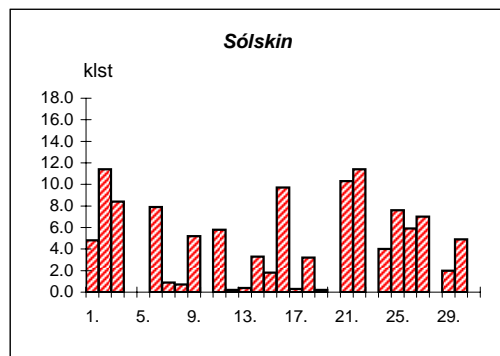
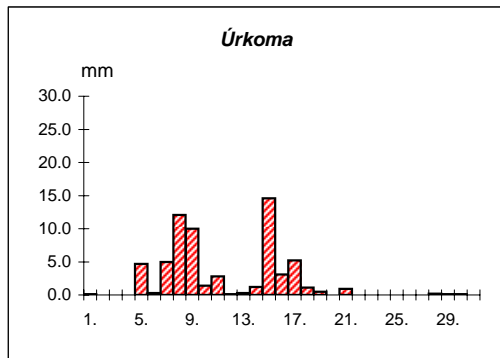
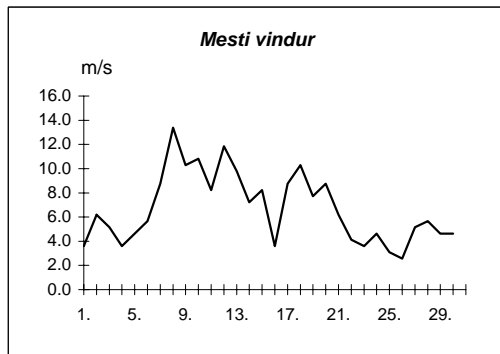
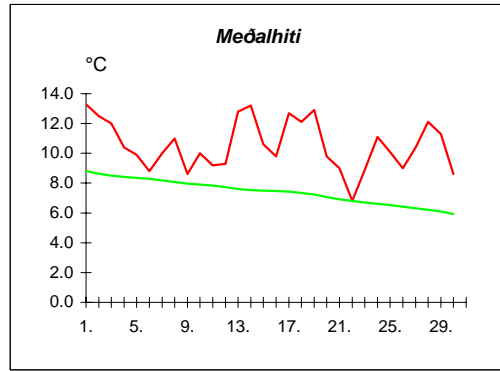


Reykjavík september 2006

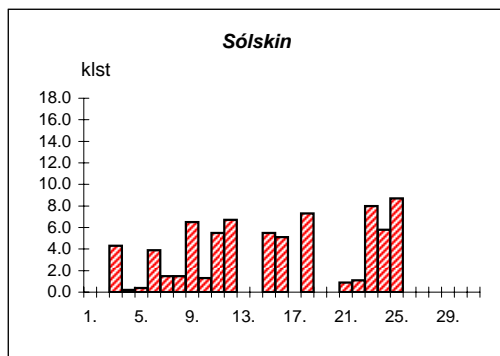
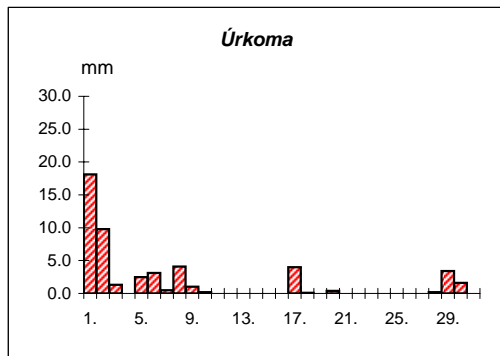
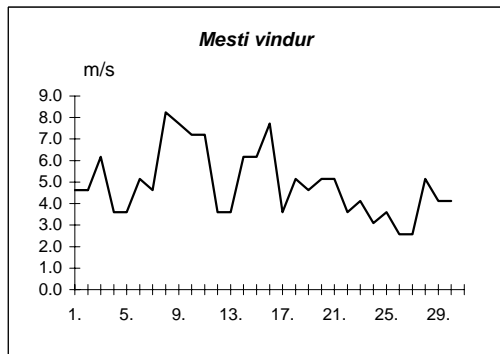
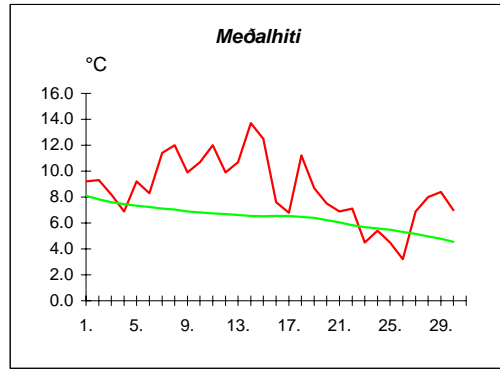
Dags	Meðalhiti (°C)	Hámark (°C)	Lágmark (°C)	Úrkoma (mm)	Úrkomutegund	Snjódýpt (cm)	Snjöhula (0-4)	Sólskin (klst)	Meðalvindur (m/s)	Mesti vindur (m/s)	Hviða (m/s)
1.	13.3	17.5	9.7	0.1	ri		0	4.8	1.5	3.6	6.2
2.	12.5	17.6	8.5	---			0	11.4	1.9	6.2	10.3
3.	12.0	16.5	7.4	---			0	8.4	2.4	5.1	7.2
4.	10.4	16.1	7.9	---			0	0.0	2.3	3.6	5.7
5.	9.9	12.0	9.1	4.7	ri		0	0.0	2.0	4.6	7.2
6.	8.8	12.0	5.1	0.3	ri		0	7.9	2.0	5.7	9.3
7.	10.0	11.5	8.8	5.0	ri		0	0.9	3.3	8.8	16.0
8.	11.0	12.8	7.8	12.1	ri		0	0.7	7.5	13.4	19.0
9.	8.6	10.7	7.4	10.0	ri		0	5.2	5.3	10.3	16.5
10.	10.0	11.5	6.2	1.4	ri		0	0.0	6.7	10.8	18.5
11.	9.2	11.0	7.9	2.8	ri		0	5.8	4.9	8.2	13.4
12.	9.3	10.9	6.1	0.1	ri		0	0.2	6.0	11.8	19.0
13.	12.8	15.6	9.1	0.3	ri		0	0.4	6.5	9.8	16.5
14.	13.2	15.9	11.8	1.2	ri		0	3.3	3.5	7.2	12.9
15.	10.6	13.5	9.2	14.6	ri		0	1.8	3.4	8.2	13.4
16.	9.8	12.7	7.0	3.1	ri		0	9.7	1.7	3.6	5.7
17.	12.7	15.1	8.5	5.2	ri		0	0.3	5.4	8.8	13.9
18.	12.1	14.2	9.8	1.1	ri		0	3.2	6.4	10.3	16.0
19.	12.9	14.4	11.3	0.5	ri		0	0.2	4.0	7.7	13.9
20.	9.8	14.0	8.3	0.0			0	0.0	3.3	8.8	15.4
21.	9.0	13.1	6.4	0.9	ri		0	10.3	2.6	6.2	10.8
22.	6.8	12.2	2.2	---			0	11.4	1.3	4.1	5.7
23.	8.9	12.0	4.5	---			0	0.0	1.3	3.6	5.7
24.	11.1	14.1	8.9	---			0	4.0	2.5	4.6	7.2
25.	10.1	13.7	8.2	---			0	7.6	1.6	3.1	5.1
26.	9.0	11.3	8.6	---			0	5.9	1.3	2.6	4.1
27.	10.4	14.2	5.4	---			0	7.0	3.0	5.1	8.8
28.	12.1	14.9	9.5	0.2	ri		0	0.0	2.5	5.7	9.8
29.	11.3	15.0	9.4	0.1	ri		0	2.0	1.7	4.6	8.8
30.	8.6	14.1	8.0	0.1	ri		0	4.9	2.0	4.6	7.7



Meðalhiti	=	10.5 °C
Frávik frá meðaltali 1931-60	=	1.9 °C
Meðalhámarkshiti	=	13.7 °C
Meðallágmarkshiti	=	7.9 °C
Úrkomumagn	=	63.8 mm
Hlutfall úrkomu af meðaltali 1931-60	=	89.0 %
Meðalvindhraði	=	3.3 m/s
Sólskinsstundir	=	117.3 klst

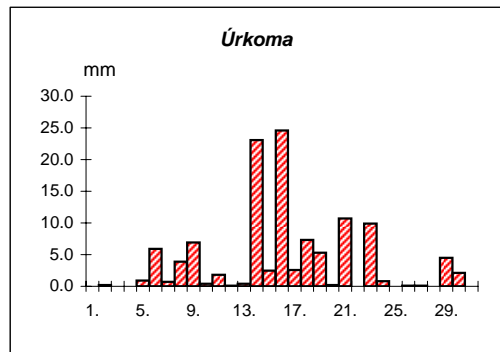
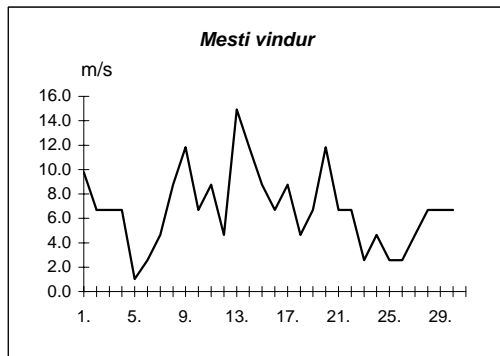
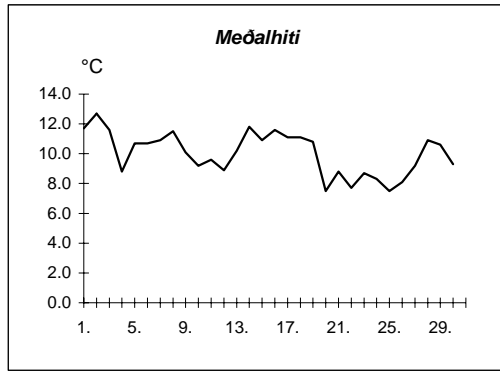
Akureyri september 2006

Dags	Meðalhiti (°C)	Hámark (°C)	Lágmark (°C)	Úrkoma (mm)	Úrkomutegund	Snjódýpt (cm)	Snjöhula (0-4)	Sólskin(klst)	Meðalvindur (m/s)	Mesti vindur (m/s)	Hviða (m/s)
1.	9.2	10.6	8.0	18.1	ri		0	0.0	2.6	4.6	6.7
2.	9.3	9.9	8.8	9.8	ri		0	0.0	3.0	4.6	7.7
3.	8.2	10.2	8.0	1.3	ri		0	4.3	3.8	6.2	9.8
4.	6.9	10.2	4.5	---			0	0.2	1.8	3.6	5.7
5.	9.2	12.6	6.2	2.5	ri		0	0.4	1.3	3.6	6.2
6.	8.3	10.2	7.9	3.1	ri		0	3.9	2.4	5.1	8.2
7.	11.4	15.6	6.8	0.5	ri		0	1.5	2.8	4.6	9.3
8.	12.0	16.5	7.7	4.1	ri		0	1.5	3.9	8.2	19.6
9.	9.9	16.5	7.9	1.0	ri		0	6.5	3.1	7.7	13.4
10.	10.7	14.0	7.9	0.2	ri		0	1.3	4.7	7.2	14.9
11.	12.0	14.9	10.8	---			0	5.5	2.6	7.2	14.4
12.	9.9	14.8	5.8	---			0	6.7	1.9	3.6	6.2
13.	10.7	13.2	7.9	---			0	0.0	1.8	3.6	8.2
14.	13.7	17.1	11.2	0.0			0	0.0	2.6	6.2	12.4
15.	12.5	17.4	8.2	---			0	5.5	2.3	6.2	12.4
16.	7.6	14.4	5.7	0.0			0	5.1	3.9	7.7	11.8
17.	6.8	9.6	3.9	4.0	ri		0	0.0	1.3	3.6	4.6
18.	11.2	17.2	7.6	0.1	ri		0	7.3	3.3	5.1	10.3
19.	8.7	13.2	7.3	0.0			0	0.0	2.6	4.6	8.2
20.	7.5	9.6	6.7	0.4	ri		0	0.0	2.9	5.1	12.4
21.	6.9	8.6	5.3	0.0			0	0.9	2.0	5.1	7.7
22.	7.1	9.6	3.8	0.0			0	1.1	1.4	3.6	7.2
23.	4.5	9.2	0.2	---			0	8.0	1.2	4.1	6.2
24.	5.4	11.7	1.2	---			0	5.8	1.3	3.1	4.6
25.	4.5	10.3	0.3	---			0	8.7	1.5	3.6	5.7
26.	3.2	7.2	0.1	---			0	0.0	1.0	2.6	3.6
27.	6.9	8.0	4.4	---			0	0.0	1.3	2.6	4.6
28.	8.0	10.0	5.9	0.2	ri		0	0.0	2.0	5.1	7.2
29.	8.4	10.2	7.8	3.4	ri		0	0.0	1.7	4.1	7.7
30.	7.0	8.3	6.6	1.6	ri		0	0.0	2.1	4.1	6.7



Meðalhiti	=	8.6 °C
Frávik frá meðaltali 1931-60	=	0.8 °C
Meðalhámarkshiti	=	12.0 °C
Meðallágmarkshiti	=	6.2 °C
Úrkomumagn	=	50.3 mm
Hlutfall úrkomu af meðaltali 1931-60	=	109.0 %
Meðalvindhraði	=	2.3 m/s
Sólskinsstundir	=	74.2 klst

Dags	Meðalhiti (°C)	Hámark (°C)	Lágmark (°C)	Úrkoma (mm)	Úrkomutegund	Snjódýpt (cm)	Snjöhula (0-4)	Sólskin(klst)	Meðalvindur (m/s)	Mesti vindur (m/s)
1.	11.7	14.0	10.8	---			0		6.2	9.8
2.	12.7	15.4	10.4	0.2	ri		0		4.4	6.7
3.	11.6	14.8	10.5	0.0			0		5.9	6.7
4.	8.8	12.3	6.3	0.0			0		2.5	6.7
5.	10.7	13.7	7.7	0.9	ri		0		0.5	1.0
6.	10.7	14.9	8.4	5.9	ri		0		1.2	2.6
7.	10.9	13.0	8.8	0.7	ri		0		1.6	4.6
8.	11.5	14.0	9.7	3.9	ri		0		4.9	8.8
9.	10.1	12.8	6.3	6.9	ri		0		6.0	11.8
10.	9.2	12.7	4.3	0.4	ri		0		2.7	6.7
11.	9.6	12.0	6.5	1.8	ri		0		3.8	8.8
12.	8.9	12.7	4.3	0.1	ri		0		0.5	4.6
13.	10.2	12.5	6.7	0.4	ri		0		10.2	14.9
14.	11.8	13.3	10.0	23.1	ri		0		4.4	11.8
15.	10.9	12.5	5.9	2.5	ri		0		5.7	8.8
16.	11.6	15.2	9.2	24.6	ri		0		1.8	6.7
17.	11.1	13.1	9.1	2.6	ri		0		5.9	8.8
18.	11.1	12.7	9.7	7.3	ri		0		3.3	4.6
19.	10.8	12.4	10.1	5.3	ri		0		4.1	6.7
20.	7.5	11.0	5.8	0.2	ri		0		7.1	11.8
21.	8.8	11.6	5.5	10.7	ri		0		3.7	6.7
22.	7.7	11.1	5.4	---			0		4.3	6.7
23.	8.7	11.3	6.9	9.9	ri		0		1.3	2.6
24.	8.3	12.4	5.4	0.8	ri		0		2.0	4.6
25.	7.5	11.9	4.4	---			0		0.7	2.6
26.	8.1	10.3	5.7	0.1	ri		0		2.1	2.6
27.	9.2	11.2	7.8	0.1	ri		0		2.6	4.6
28.	10.9	12.3	8.5	0.0			0		5.5	6.7
29.	10.6	12.3	10.1	4.5	ri		0		4.7	6.7
30.	9.3	11.4	7.9	2.1	ri		0		4.4	6.7

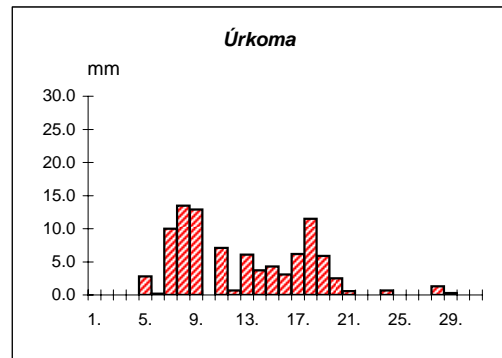
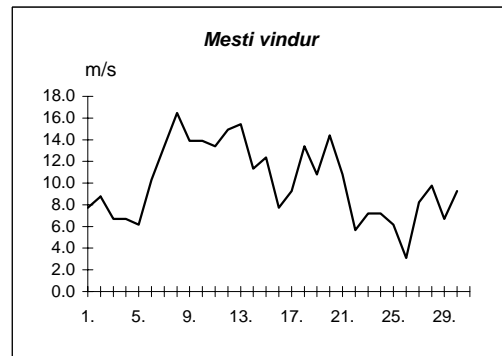
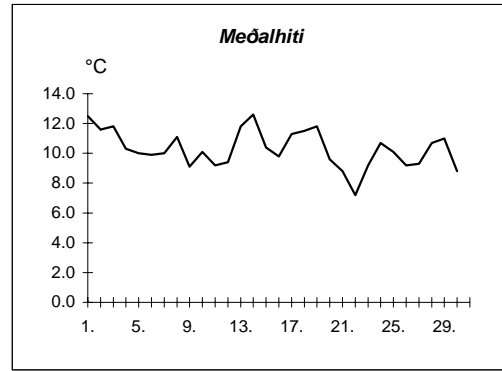


Meðalhiti	=	10.0 °C
Meðalhámarkshiti	=	12.7 °C
Meðallágmarkshiti	=	7.6 °C
Úrkomumagn	=	115.0 mm
Meðalvindhraði	=	3.8 m/s

Útgefandi : **Veðurstofa Íslands**  
 Heimilisfang : **Bústaðavegur 9**  
**150 Reykjavík**

Keflavík september 2006

Dags	Meðalhiti (°C)	Hámark (°C)	Lágmark (°C)	Úrkoma (mm)	Úrkomutegund	Snjódýpt (cm)	Snjöhula (0-4)	Sólskin (klst)	Meðalvindur (m/s)	Mesti vindur (m/s)	Hviða (m/s)
1.	12.5	15.8	10.3	---		0			4.8	7.7	10.3
2.	11.6	15.8	8.8	---		0			5.2	8.8	12.4
3.	11.8	16.5	8.5	---		0			3.9	6.7	7.7
4.	10.3	15.0	8.6	0.0		0			3.8	6.7	8.8
5.	10.0	12.2	9.5	2.8	ri	0			3.0	6.2	7.7
6.	9.9	11.7	7.7	0.2	ri	0			4.3	10.3	13.9
7.	10.0	13.3	9.3	10.0	ri	0			6.9	13.4	18.0
8.	11.1	12.4	8.3	13.5	ri	0			11.1	16.5	23.7
9.	9.1	11.0	8.0	12.9	ri	0			8.7	13.9	19.0
10.	10.1	11.5	8.3	0.0		0			9.5	13.9	19.6
11.	9.2	11.0	8.4	7.1	ri	0			7.6	13.4	19.0
12.	9.4	11.2	6.7	0.7	ri	0			10.2	14.9	20.1
13.	11.8	14.3	9.3	6.1	ri	0			9.0	15.4	21.6
14.	12.6	14.0	11.7	3.7	ri	0			7.1	11.3	16.5
15.	10.4	12.8	9.4	4.3	ri	0			5.6	12.4	15.4
16.	9.8	11.9	7.6	3.1	ri	0			3.6	7.7	10.3
17.	11.3	14.6	8.4	6.2	ri	0			6.6	9.3	12.4
18.	11.5	14.4	9.8	11.5	ri	0			9.3	13.4	18.0
19.	11.8	13.0	10.4	5.9	ri	0			5.4	10.8	12.9
20.	9.6	12.8	8.9	2.5	ri	0			7.3	14.4	19.6
21.	8.8	11.6	7.2	0.6	ri	0			6.8	10.8	14.4
22.	7.2	11.1	3.8	---		0			3.0	5.7	7.7
23.	9.2	12.1	6.2	---		0			3.8	7.2	9.8
24.	10.7	12.7	9.4	0.7	ri	0			3.7	7.2	9.8
25.	10.1	13.0	8.9	0.0		0			2.6	6.2	8.8
26.	9.2	11.1	9.0	---		0			1.5	3.1	4.6
27.	9.3	12.9	4.9	---		0			4.9	8.2	11.3
28.	10.7	12.8	8.9	1.3	ri	0			6.4	9.8	13.4
29.	11.0	13.5	10.0	0.3	ri	0			4.1	6.7	8.8
30.	8.8	12.6	7.6	0.0		0			4.9	9.3	11.3



Meðalhiti	=	10.3 °C
Frávik frá meðaltali 1931-60	=	1.9 °C
Meðalhámarkshiti	=	13.0 °C
Meðallágmarkshiti	=	8.5 °C
Úrkomumagn	=	93.4 mm
Hlutfall úrkomu af meðaltali 1931-60	=	81.0 %
Meðalvindhraði	=	5.8 m/s