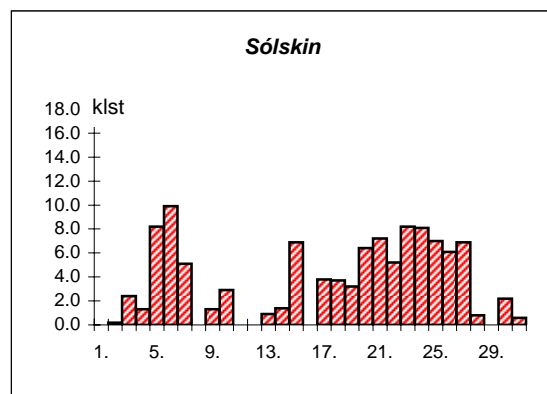
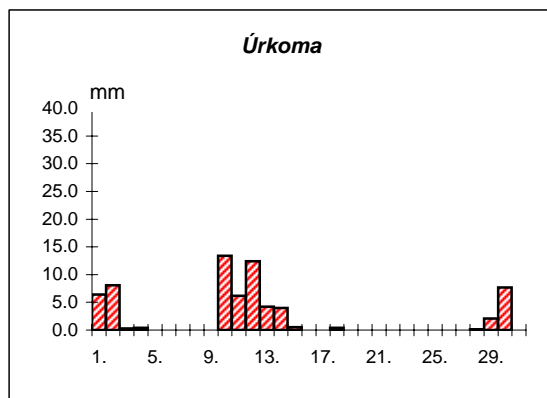
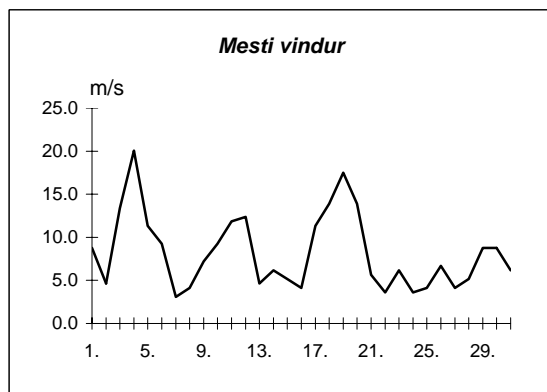
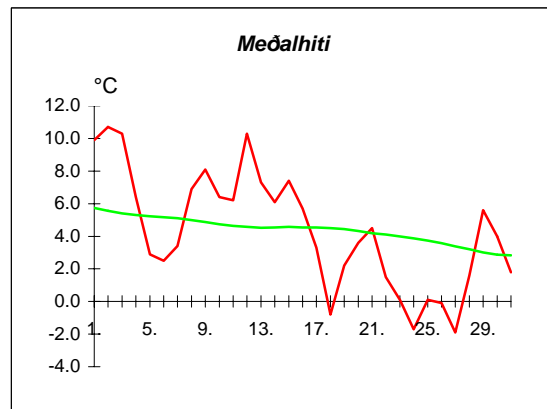
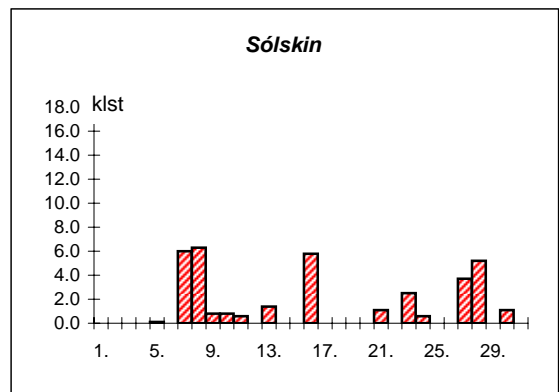
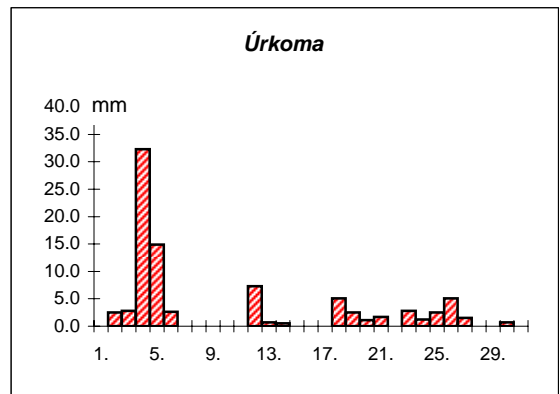
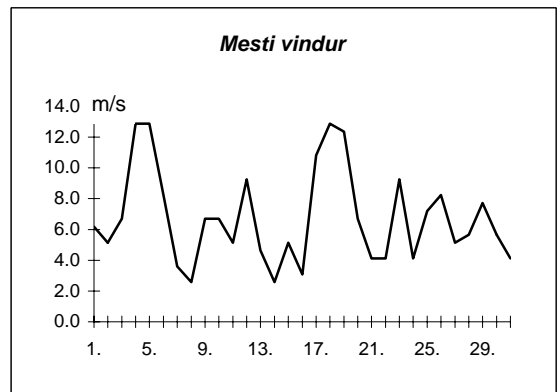
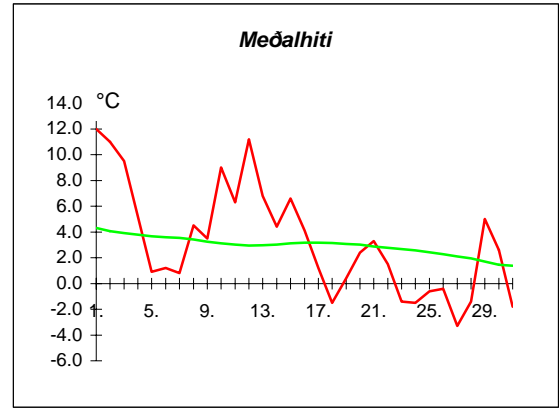


Dags	Meðalhiti (°C)	Hámark (°C)	Lágmark (°C)	Úrkoma (mm)	Úrkomutegund	Snjódýpt (cm)	Snjöhula (0-4)	Sólskin(klst)	Meðalvindur (m/s)	Mesti vindur (m/s)	Hviða (m/s)
1.	9.9	11.6	7.8	6.4	ri		0	0.0	3.1	8.8	13.4
2.	10.7	13.1	9.4	8.1	ri		0	0.2	2.0	4.6	7.7
3.	10.3	11.9	8.0	0.3	ri		0	2.4	6.1	13.4	20.1
4.	6.4	11.3	4.9	0.4	ri		0	1.3	10.2	20.1	31.9
5.	2.9	5.1	2.3	0.0			0	8.2	8.0	11.3	20.6
6.	2.5	6.0	1.0	0.0			0	9.9	4.1	9.3	14.4
7.	3.4	7.0	-2.2	---			0	5.1	1.3	3.1	4.6
8.	6.9	8.2	4.8	0.0			0	0.0	2.0	4.1	5.7
9.	8.1	10.1	5.7	0.0			0	1.3	5.1	7.2	10.8
10.	6.4	8.9	6.0	13.4	ri		0	2.9	3.8	9.3	13.4
11.	6.2	7.3	4.2	6.2	ri		0	0.0	5.4	11.8	17.0
12.	10.3	11.8	5.8	12.4	ri		0	0.0	4.9	12.4	19.0
13.	7.3	10.8	7.0	4.2	ri		0	0.9	2.3	4.6	7.2
14.	6.1	8.2	5.0	4.0	ri		0	1.4	3.0	6.2	9.8
15.	7.4	11.5	3.2	0.5	ri		0	6.9	1.3	5.1	8.2
16.	5.7	9.9	4.1	0.0			0	0.0	2.1	4.1	6.2
17.	3.3	6.8	0.9	0.0			0	3.8	6.1	11.3	18.0
18.	-0.8	1.4	-2.3	0.4	sn		2	3.7	9.4	13.9	25.2
19.	2.2	4.0	-0.6	0.0			0	3.2	8.5	17.5	30.4
20.	3.6	6.0	0.0	0.0			0	6.4	5.6	13.9	22.7
21.	4.5	7.8	2.5	---			0	7.2	2.1	5.7	9.3
22.	1.5	5.7	-0.6	---			0	5.2	1.7	3.6	4.6
23.	0.1	3.1	-0.7	---			0	8.2	2.5	6.2	11.3
24.	-1.7	2.1	-4.6	---			0	8.1	1.7	3.6	4.6
25.	0.1	4.5	-2.8	---			0	7.0	1.9	4.1	6.7
26.	-0.1	2.8	-3.1	---			0	6.1	3.6	6.7	11.3
27.	-1.9	1.8	-4.0	---			0	6.9	2.1	4.1	6.2
28.	1.6	3.6	-4.0	0.1	sl		0	0.8	3.4	5.1	6.7
29.	5.6	7.0	2.0	2.1	sl		0	0.0	5.9	8.8	14.4
30.	4.0	6.5	3.6	7.7	sl		0	2.2	4.9	8.8	13.4
31.	1.8	4.5	-1.5	0.0			0	0.6	3.6	6.2	8.8



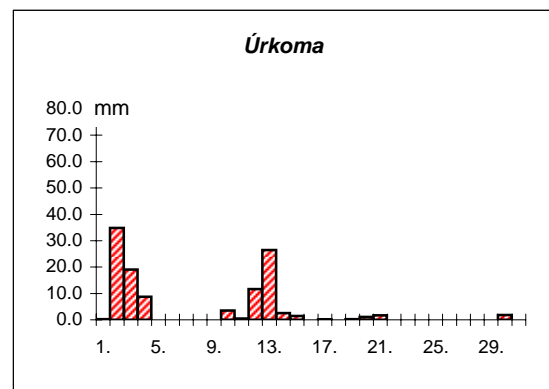
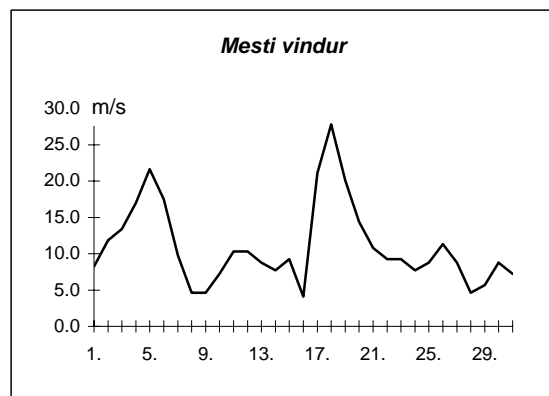
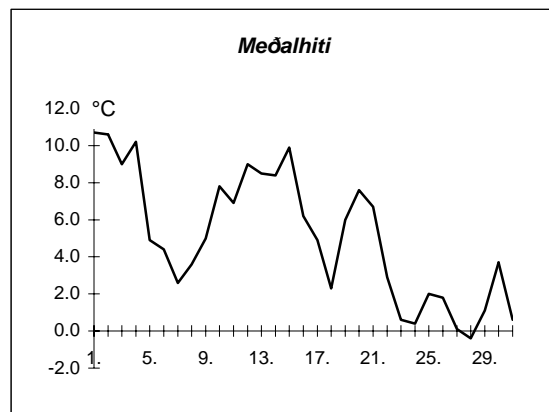
Meðalhiti	=	4.3 °C
Frávik frá meðaltali 1931-60	=	-0.6 °C
Meðalhámarkshiti	=	7.1 °C
Meðallágmarkshiti	=	2.0 °C
Úrkomumagn	=	66.2 mm
Hlutfall úrkomu af meðaltali 1931-60	=	68.0 %
Meðalvindhraði	=	4.1 m/s
Sólskinsstundir	=	109.9 klst

Dags	Meðalhiti (°C)	Hámark (°C)	Lágmark (°C)	Úrkoma (mm)	Úrkomutegund	Snjódýpt (cm)	Snjöhula (0-4)	Sólskin(klst)	Meðalvindur (m/s)	Mesti vindur (m/s)	Hviða (m/s)
1.	12.0	15.0	8.5	---			0	0.0	2.8	6.2	11.8
2.	11.0	12.7	9.0	2.5	ri		0	0.0	2.3	5.1	10.8
3.	9.5	12.3	8.9	2.8	ri		0	0.0	3.9	6.7	12.9
4.	5.2	10.2	2.6	32.3	ri		0	0.0	9.4	12.9	19.0
5.	0.9	4.3	0.1	14.9	sl		0	0.1	9.0	12.9	20.1
6.	1.2	3.0	-4.0	2.6	sl		0	0.0	3.8	8.2	11.8
7.	0.8	7.0	-3.2	0.0			0	6.0	1.3	3.6	5.7
8.	4.5	10.9	0.5	0.0			0	6.3	0.6	2.6	3.6
9.	3.5	8.2	-0.6	---			0	0.8	1.8	6.7	12.4
10.	9.0	12.5	5.5	---			0	0.8	4.6	6.7	13.9
11.	6.3	10.5	5.6	0.0			0	0.6	2.3	5.1	11.8
12.	11.2	13.0	4.0	7.3	ri		0	0.0	4.5	9.3	15.4
13.	6.8	11.7	6.3	0.7	ri		0	1.4	1.0	4.6	7.2
14.	4.4	7.6	1.1	0.5	ri		0	0.0	0.7	2.6	4.1
15.	6.6	7.5	4.5	0.0			0	0.0	2.3	5.1	8.8
16.	4.1	7.7	-0.4	---			0	5.8	0.7	3.1	6.2
17.	1.2	7.0	-0.4	0.0			0	0.0	6.5	10.8	15.4
18.	-1.5	0.0	-3.0	5.1	sl	2	4	0.0	10.0	12.9	20.1
19.	0.4	1.0	-2.0	2.5	sn	3	4	0.0	6.9	12.4	17.5
20.	2.4	3.5	0.8	1.1	sl	2	2	0.0	3.8	6.7	11.3
21.	3.3	4.5	2.0	1.7	ri		2	1.1	1.9	4.1	6.2
22.	1.5	4.2	1.4	---			0	0.0	1.8	4.1	7.2
23.	-1.4	2.2	-1.7	2.8	sn	2	4	2.5	3.0	9.3	13.9
24.	-1.5	0.8	-3.3	1.2	sn	3	4	0.6	1.5	4.1	6.2
25.	-0.6	1.2	-2.1	2.5	sn	7	4	0.0	3.0	7.2	10.8
26.	-0.4	1.2	-2.5	5.1	sn	10	4	0.0	2.9	8.2	12.4
27.	-3.3	1.0	-5.2	1.5	sn	10	4	3.7	1.5	5.1	6.7
28.	-1.4	3.0	-8.9	---		10	4	5.2	2.6	5.7	9.8
29.	5.0	6.5	1.5	---		8	4	0.0	4.6	7.7	13.4
30.	2.6	7.2	2.0	0.7	ri		2	1.1	2.3	5.7	10.8
31.	-1.8	2.0	-2.8	0.0			2	0.0	1.3	4.1	7.7



Meðalhiti	=	3.3 °C
Frávik frá meðaltali 1931-60	=	-0.3 °C
Meðalhámarkshiti	=	6.4 °C
Meðallágmarkshiti	=	0.8 °C
Úrkomumagn	=	87.8 mm
Hlutfall úrkomu af meðaltali 1931-60	=	154.0 %
Meðalvindhraði	=	3.3 m/s
Sólskinsstundir	=	36.0 klst

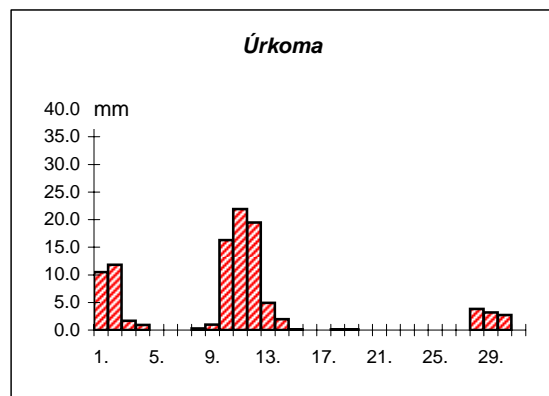
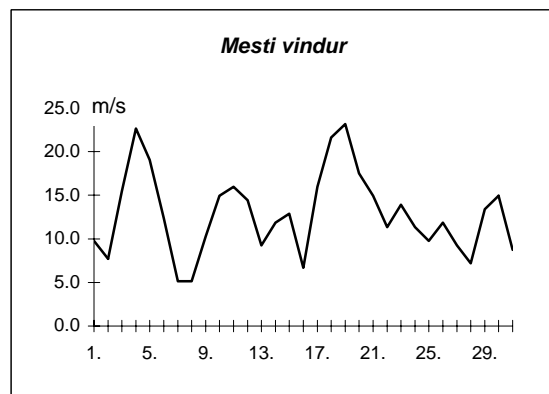
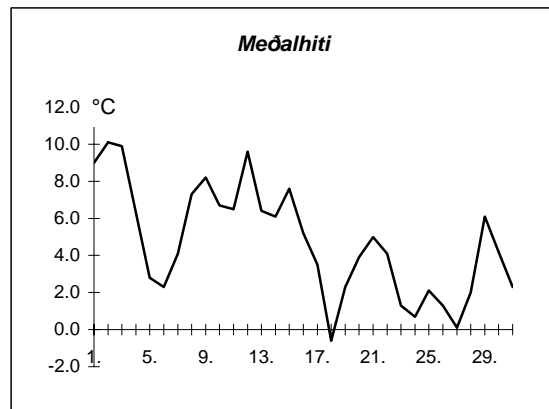
Dags	Meðalhiti (°C)	Hámark (°C)	Lágmark (°C)	Úrkoma (mm)	Úrkomutegund	Snjóþýpt (cm)	Snjóhula (0-4)	Sólskin (klst)	Meðalvindur (m/s)	Mesti vindur (m/s)	Hviða (m/s)
1.	10.7	12.0	8.3	0.2	ri		0		4.6	8.2	17.5
2.	10.6	12.0	9.7	34.8	ri		0		7.9	11.8	19.0
3.	9.0	11.5	6.8	19.1	ri		0		5.7	13.4	20.1
4.	10.2	14.0	7.4	8.8	ri		0		9.0	17.0	28.3
5.	4.9	12.6	3.0	0.0			0		15.1	21.6	34.0
6.	4.4	8.8	2.2	0.0			0		9.0	17.5	25.7
7.	2.6	8.0	-1.8	---			0		2.0	9.8	15.4
8.	3.6	9.8	-0.5	---			0		1.2	4.6	5.7
9.	5.0	9.4	-1.0	---			0		2.4	4.6	5.7
10.	7.8	10.0	3.1	3.5	ri		0		3.7	7.2	10.3
11.	6.9	9.4	3.4	0.5	ri		0		3.9	10.3	13.9
12.	9.0	10.5	6.8	11.7	ri		0		5.9	10.3	14.4
13.	8.5	10.0	7.6	26.5	ri		0		4.9	8.8	11.8
14.	8.4	10.2	5.8	2.5	ri		0		3.7	7.7	10.8
15.	9.9	11.2	8.1	1.4	ri		0		5.1	9.3	13.4
16.	6.2	10.2	5.5	0.0			0		1.8	4.1	5.1
17.	4.9	8.2	3.7	0.1	ri		0		7.8	21.1	35.0
18.	2.3	4.7	0.2	0.0			0		20.0	27.8	44.3
19.	6.0	7.6	3.3	0.3	sl		0		12.7	20.1	32.9
20.	7.6	9.5	6.2	1.1	ri		0		9.7	14.4	26.8
21.	6.7	9.1	4.4	1.7	ri		0		6.3	10.8	17.5
22.	2.9	8.4	1.5	---			0		4.7	9.3	12.4
23.	0.6	4.0	-1.2	---			0		3.8	9.3	13.9
24.	0.4	2.4	-1.7	---			0		3.1	7.7	11.8
25.	2.0	4.2	-1.0	---			0		5.4	8.8	14.9
26.	1.8	5.1	-1.1	---			0		6.7	11.3	16.5
27.	0.1	4.7	-1.7	---			0		3.8	8.8	12.4
28.	-0.4	1.7	-4.9	---			0		2.8	4.6	6.7
29.	1.1	3.1	-3.6	---			0		2.2	5.7	8.2
30.	3.7	7.4	1.7	1.8	ri		0		4.0	8.8	13.4
31.	0.6	3.3	-2.2	---			0		2.3	7.2	10.3



Meðalhiti	=	5.1 °C
Meðalhámarkshiti	=	8.2 °C
Meðallágmarkshiti	=	2.5 °C
Úrkomumagn	=	114.0 mm
Meðalvindhraði	=	5.8 m/s

Útgefandi : **Veðurstofa Íslands**
 Heimilisfang : **Bústaðavegur 9**
150 Reykjavík

Dags	Meðalhiti (°C)	Hámark (°C)	Lágmark (°C)	Úrkoma (mm)	Úrkomutegund	Snjódýpt (cm)	Snjöhula (0-4)	Sólskin(klist)	Meðalvindur (m/s)	Mesti vindur (m/s)	Hviða (m/s)
1.	9.0	11.5	7.3	10.5	ri		0		4.5	9.8	13.9
2.	10.1	11.6	9.3	11.8	ri		0		5.1	7.7	10.8
3.	9.9	11.6	8.3	1.7	ri		0		9.5	15.4	21.1
4.	6.3	11.6	4.4	0.9	sl		0		14.9	22.7	27.8
5.	2.8	5.2	0.5	0.0			0		12.8	19.0	24.7
6.	2.3	4.5	1.3	---			0		8.8	12.4	17.0
7.	4.1	7.5	-0.1	---			0		2.6	5.1	7.2
8.	7.3	9.0	5.2	0.3	ri		0		3.8	5.1	8.2
9.	8.2	11.5	6.2	1.0	ri		0		7.4	10.3	14.4
10.	6.7	9.6	5.9	16.3	ri		0		6.2	14.9	19.0
11.	6.5	7.5	4.9	21.9	ri		0		7.7	16.0	22.1
12.	9.6	11.0	6.7	19.5	ri		0		6.1	14.4	20.6
13.	6.4	11.0	5.0	4.9	ri		0		3.5	9.3	12.4
14.	6.1	8.8	4.5	2.0	ri		0		8.6	11.8	13.9
15.	7.6	9.8	6.7	0.1	ri		0		5.8	12.9	15.4
16.	5.2	9.8	2.5	---			0		3.3	6.7	8.8
17.	3.5	7.7	2.0	0.0			0		10.3	16.0	20.1
18.	-0.6	3.9	-2.2	0.1	sl		0		16.6	21.6	28.8
19.	2.3	4.3	-1.6	0.1	sn		0		15.1	23.2	29.3
20.	3.9	5.7	2.8	0.0			0		12.3	17.5	21.1
21.	5.0	7.5	3.6	---			0		7.2	14.9	18.5
22.	4.1	6.2	3.3	---			0		5.7	11.3	15.4
23.	1.3	4.7	0.8	---			0		8.4	13.9	17.0
24.	0.7	1.8	-0.6	---			0		7.9	11.3	14.4
25.	2.1	3.5	0.8	---			0		6.6	9.8	14.4
26.	1.3	3.5	-0.7	---			0		8.8	11.8	16.0
27.	0.1	2.4	-1.4	---			0		4.6	9.3	11.3
28.	2.0	3.0	-2.1	3.8	ri		0		6.1	7.2	10.3
29.	6.1	7.7	2.7	3.2	ri		0		9.3	13.4	17.5
30.	4.2	6.2	3.9	2.7	sl		0		8.1	14.9	19.6
31.	2.3	5.3	-1.3	0.0			0		3.9	8.8	12.9



Meðalhiti	=	4.7 °C
Frávik frá meðaltali 1931-60	=	-0.3 °C
Meðalhámarkshiti	=	7.3 °C
Meðallágmarkshiti	=	2.9 °C
Úrkomumagn	=	100.8 mm
Hlutfall úrkomu af meðaltali 1931-60	=	80.0 %
Meðalvindhraði	=	7.8 m/s