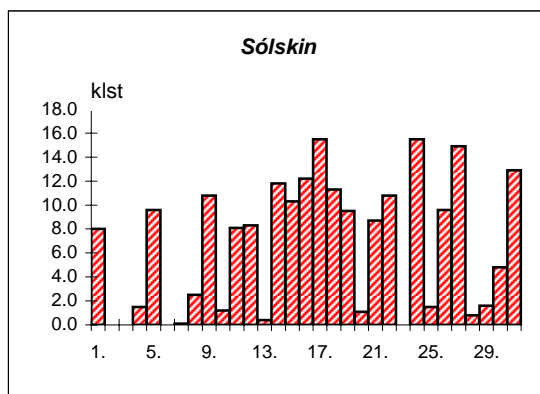
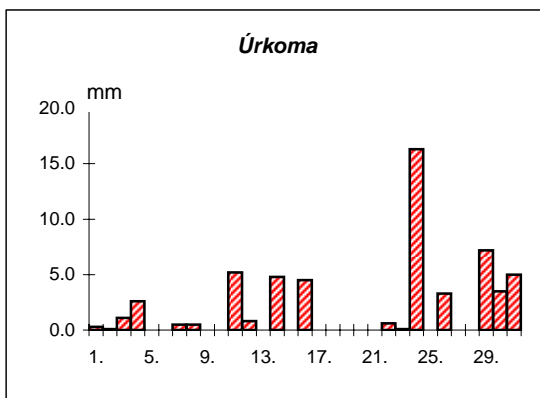
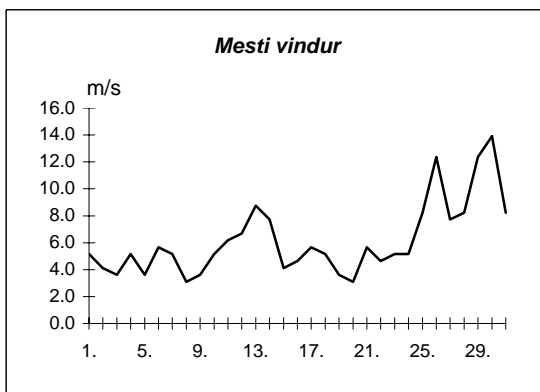
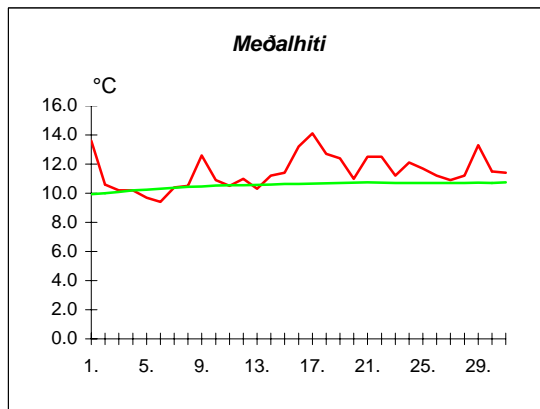
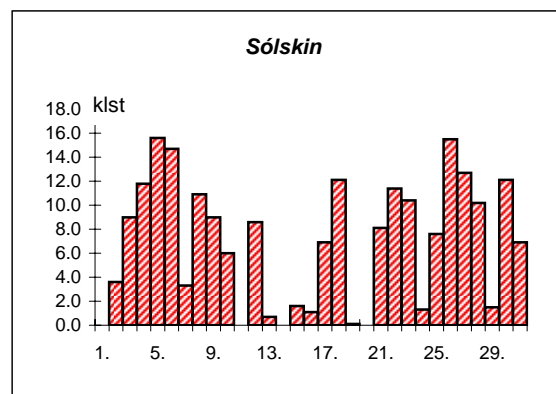
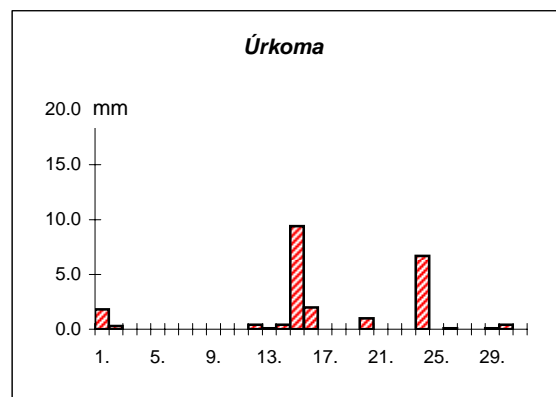
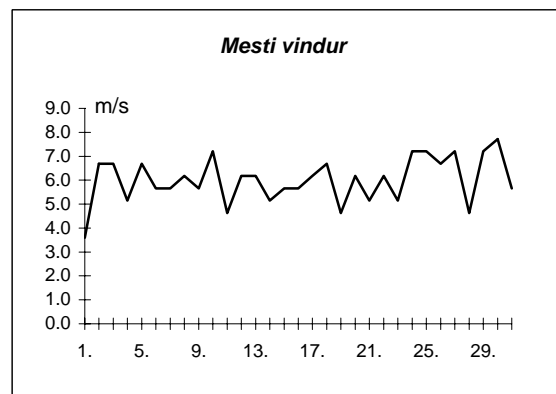
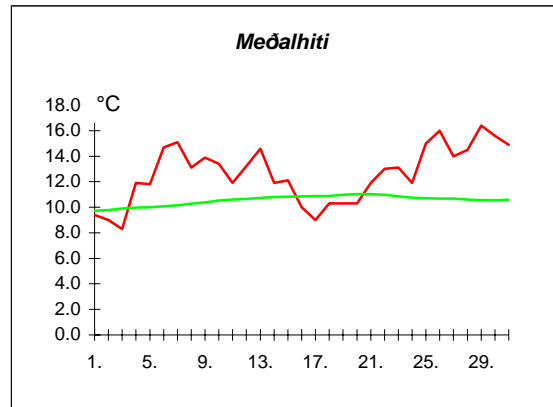


Dags	Meðalhiti (°C)	Hámark (°C)	Lágmark (°C)	Úrkoma (mm)	Úrkomutegund	Snjódypt (cm)	Snjóhula (0-4)	Sólskín(klst)	Meðalvindur (m/s)	Mesti vindur (m/s)	Hviða (m/s)
1.	13.6	17.4	9.9	0.3	ri		0	8.0	2.1	5.1	8.8
2.	10.6	17.1	9.6	0.1	ri		0	0.0	2.2	4.1	5.7
3.	10.2	11.9	9.5	1.1	ri		0	0.0	1.8	3.6	5.1
4.	10.2	12.0	8.6	2.6	ri		0	1.5	2.9	5.1	6.7
5.	9.7	12.0	8.5	0.0			0	9.6	2.3	3.6	6.7
6.	9.4	11.0	6.5	---			0	0.0	3.0	5.7	9.3
7.	10.4	12.1	9.8	0.5	ri		0	0.1	3.2	5.1	7.7
8.	10.5	13.3	8.1	0.5	ri		0	2.5	1.8	3.1	5.1
9.	12.6	16.3	9.0	0.0			0	10.8	1.8	3.6	4.6
10.	10.9	16.2	9.5	---			0	1.2	2.6	5.1	8.8
11.	10.5	14.0	7.0	5.2	ri		0	8.1	3.0	6.2	9.3
12.	11.0	13.3	8.3	0.8	ri		0	8.3	3.8	6.7	9.3
13.	10.3	13.0	7.2	---			0	0.4	5.7	8.8	14.9
14.	11.2	14.3	8.4	4.8	ri		0	11.8	4.1	7.7	11.3
15.	11.4	14.0	8.0	---			0	10.3	2.5	4.1	6.2
16.	13.2	16.4	9.6	4.5	ri		0	12.2	2.3	4.6	7.2
17.	14.1	18.4	9.8	---			0	15.5	2.8	5.7	9.8
18.	12.7	18.0	10.0	---			0	11.3	2.9	5.1	8.8
19.	12.4	15.5	9.0	---			0	9.5	1.4	3.6	5.1
20.	11.0	16.6	8.8	---			0	1.1	1.8	3.1	5.1
21.	12.5	14.6	10.6	0.0			0	8.7	3.0	5.7	8.2
22.	12.5	15.3	8.2	0.6	ri		0	10.8	2.0	4.6	5.7
23.	11.2	14.7	9.4	0.1	ri		0	0.0	1.7	5.1	7.2
24.	12.1	14.8	8.1	16.3	ri		0	15.5	2.5	5.1	7.7
25.	11.7	14.6	10.8	---			0	1.5	3.8	8.2	12.4
26.	11.2	14.1	9.6	3.3	ri		0	9.6	6.1	12.4	14.4
27.	10.9	13.6	9.0	0.0			0	14.9	5.0	7.7	11.8
28.	11.2	14.0	7.3	---			0	0.8	4.4	8.2	13.4
29.	13.3	15.3	11.5	7.2	ri		0	1.6	7.3	12.4	18.5
30.	11.5	14.6	10.6	3.5	ri		0	4.8	9.2	13.9	22.1
31.	11.4	14.2	9.1	5.0	ri		0	12.9	5.6	8.2	12.4



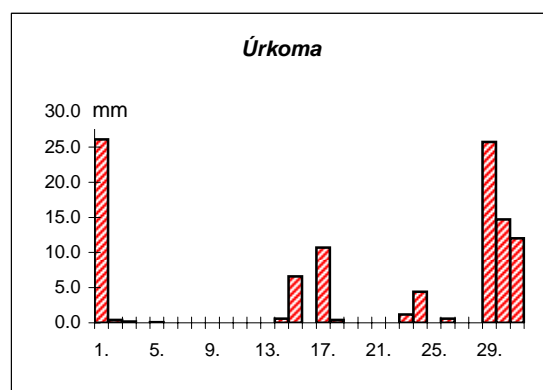
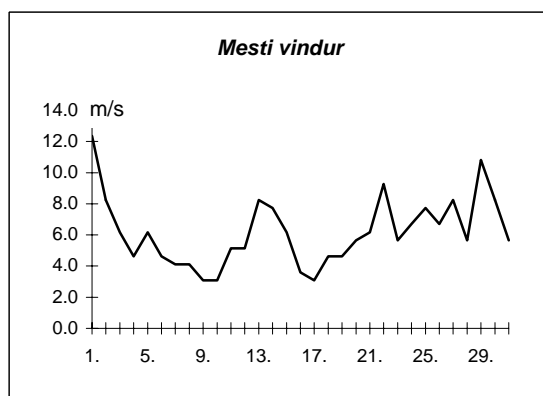
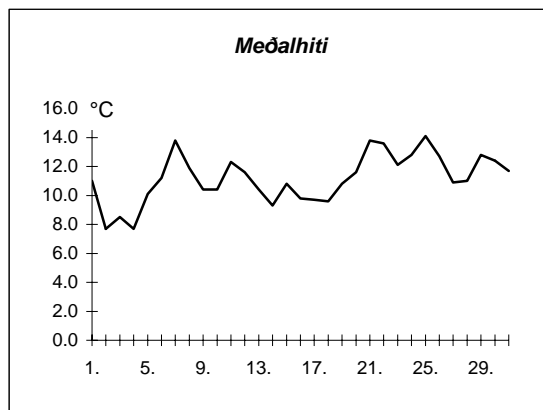
Meðalhiti	=	11.5 °C
Frávik frá meðaltali 1931-60	=	0.3 °C
Meðalhámarkshiti	=	14.6 °C
Meðallágmarkshiti	=	9.0 °C
Úrkomumagn	=	56.4 mm
Hlutfall úrkomu af meðaltali 1931-60	=	118.0 %
Meðalvindhraði	=	3.3 m/s
Sólskinsstundir	=	203.3 klst

Dags	Meðalhiti (°C)	Hámark (°C)	Lágmark (°C)	Úrkoma (mm)	Úrkomutegund	Snjódýpt (cm)	Snjöhula (0-4)	Sólskin(klst)	Meðalvindur (m/s)	Mesti vindur (m/s)	Hviða (m/s)
1.	9.4	13.2	8.5	1.8	ri		0	0.0	1.7	3.6	7.2
2.	9.0	11.5	6.9	0.3	ri		0	3.6	3.1	6.7	9.3
3.	8.3	11.4	6.2	0.0			0	9.0	3.9	6.7	9.3
4.	11.9	18.0	3.7	---			0	11.8	2.1	5.1	10.8
5.	11.8	17.0	7.5	---			0	15.6	3.5	6.7	9.8
6.	14.7	20.0	7.6	0.0			0	14.7	2.6	5.7	10.8
7.	15.1	20.0	12.0	---			0	3.3	3.9	5.7	10.8
8.	13.1	16.3	8.6	---			0	10.9	2.5	6.2	8.8
9.	13.9	17.7	10.0	---			0	9.0	2.4	5.7	8.8
10.	13.4	16.5	12.0	---			0	6.0	3.0	7.2	10.3
11.	11.9	14.0	10.0	0.0			0	0.0	2.8	4.6	7.7
12.	13.2	17.5	9.2	0.4	ri		0	8.6	3.0	6.2	9.3
13.	14.6	19.0	10.8	0.1	ri		0	0.7	2.3	6.2	10.8
14.	11.9	18.5	10.4	0.4	ri		0	0.0	2.6	5.1	8.2
15.	12.1	15.0	10.4	9.4	ri		0	1.6	2.5	5.7	9.8
16.	10.0	13.5	8.5	2.0	ri		0	1.1	4.3	5.7	8.8
17.	9.0	11.3	7.5	---			0	6.9	3.8	6.2	9.8
18.	10.3	13.0	7.6	---			0	12.1	3.0	6.7	9.8
19.	10.3	14.0	8.0	---			0	0.1	2.1	4.6	6.7
20.	10.3	12.3	8.5	1.0	ri		0	0.0	3.1	6.2	9.3
21.	11.9	15.5	9.1	0.0			0	8.1	2.8	5.1	7.2
22.	13.0	20.3	6.7	---			0	11.4	3.2	6.2	9.8
23.	13.1	16.5	9.4	---			0	10.4	2.4	5.1	7.7
24.	11.9	14.6	10.3	6.7	ri		0	1.3	3.6	7.2	11.8
25.	15.0	19.5	10.4	0.0			0	7.6	2.8	7.2	11.3
26.	16.0	20.0	12.3	0.1	ri		0	15.5	3.8	6.7	11.8
27.	14.0	18.2	10.2	---			0	12.7	2.9	7.2	13.9
28.	14.5	21.9	8.0	---			0	10.2	3.0	4.6	8.2
29.	16.4	21.0	11.2	0.1	ri		0	1.5	2.7	7.2	16.0
30.	15.6	19.0	13.0	0.4	ri		0	12.1	4.4	7.7	14.9
31.	14.9	18.5	10.7	---			0	6.9	2.8	5.7	9.3



Meðalhiti	=	12.6 °C
Frávik frá meðaltali 1931-60	=	1.7 °C
Meðalhámarkshiti	=	16.6 °C
Meðallágmarkshiti	=	9.2 °C
Úrkomumagn	=	22.7 mm
Hlutfall úrkomu af meðaltali 1931-60	=	65.0 %
Meðalvindhraði	=	3.0 m/s
Sólskinsstundir	=	212.7 klst

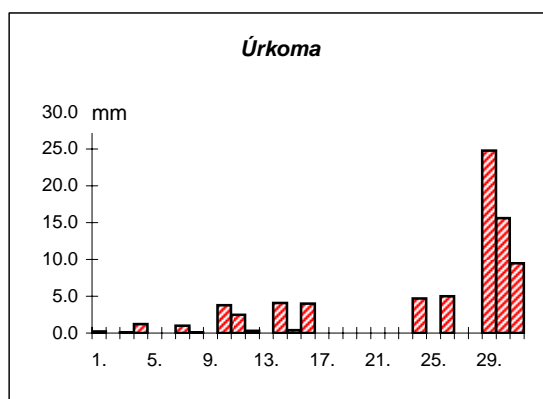
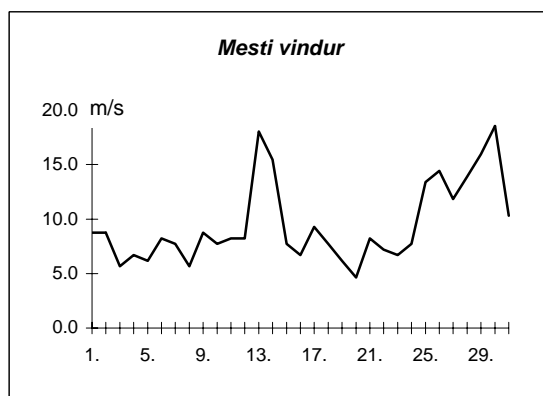
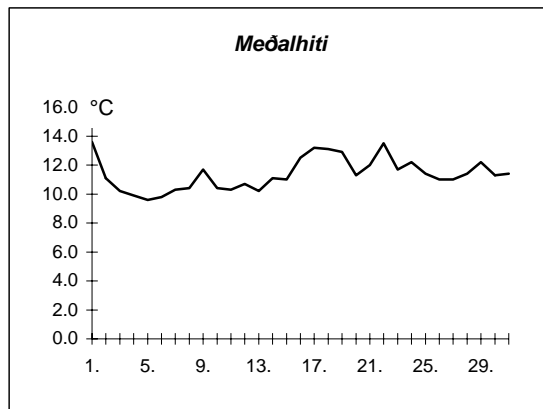
Dags	Meðalhiti (°C)	Hámark (°C)	Lágmark (°C)	Úrkoma (mm)	Úrkomutegund	Snjódypt (cm)	Snjóhula (0-4)	Sólskin (klst)	Meðalvindur (m/s)	Mesti vindur (m/s)	Hviða (m/s)
1.	11.0	13.6	9.2	26.1	ri		0		7.9	12.4	16.5
2.	7.7	11.0	7.2	0.4	ri		0		2.0	8.2	11.3
3.	8.5	12.2	5.9	0.2	ri		0		3.0	6.2	8.2
4.	7.7	11.0	6.4	0.0			0		2.3	4.6	7.7
5.	10.1	15.2	3.7	0.1	ri		0		2.7	6.2	9.3
6.	11.2	16.1	5.8	---			0		2.0	4.6	6.2
7.	13.8	18.9	6.8	---			0		2.0	4.1	5.1
8.	11.9	19.0	9.5	---			0		2.1	4.1	6.2
9.	10.4	13.4	9.2	0.0			0		1.9	3.1	4.6
10.	10.4	13.4	9.5	0.0			0		1.4	3.1	5.1
11.	12.3	15.0	9.5	0.0			0		2.5	5.1	7.2
12.	11.6	14.5	1.4	---			0		2.3	5.1	7.2
13.	10.4	14.3	8.5	---			0		4.2	8.2	10.3
14.	9.3	11.1	8.3	0.6	ri		0		3.9	7.7	11.3
15.	10.8	13.9	7.2	6.6	ri		0		2.3	6.2	7.2
16.	9.8	13.4	5.7	---			0		1.6	3.6	5.1
17.	9.7	12.0	8.0	10.7	ri		0		1.8	3.1	4.1
18.	9.6	13.0	4.9	0.4	ri		0		1.9	4.6	6.2
19.	10.8	14.2	7.4	---			0		2.1	4.6	5.7
20.	11.6	14.6	9.0	0.0			0		2.3	5.7	8.2
21.	13.8	18.4	6.1	0.0			0		3.6	6.2	10.3
22.	13.6	17.5	11.9	---			0		4.0	9.3	12.4
23.	12.1	16.1	10.3	1.2	ri		0		1.8	5.7	8.2
24.	12.8	16.8	9.0	4.4	ri		0		2.5	6.7	9.3
25.	14.1	17.2	11.9	0.0			0		3.9	7.7	12.9
26.	12.7	15.7	10.4	0.6	ri		0		2.9	6.7	11.3
27.	10.9	15.9	5.1	0.0			0		4.1	8.2	13.4
28.	11.0	14.2	5.8	---			0		2.6	5.7	7.2
29.	12.8	14.0	10.7	25.7	ri		0		7.6	10.8	14.9
30.	12.4	15.0	11.2	14.7	ri		0		5.9	8.2	10.8
31.	11.7	14.9	10.0	12.0	ri		0		2.9	5.7	7.7



Meðalhiti	=	11.2 °C
Meðalhámarkshiti	=	14.7 °C
Meðallágmarkshiti	=	7.9 °C
Úrkomumagn	=	103.7 mm
Meðalvindhraði	=	3.0 m/s

Útgefandi : **Veðurstofa Íslands**
 Heimilisfang : **Bústaðavegur 9**
150 Reykjavík

Dags	Meðalhiti (°C)	Hámark (°C)	Lágmark (°C)	Úrkoma (mm)	Úrkomutegund	Snjódýpt (cm)	Snjöhula (0-4)	Sólskín(klist)	Meðalvindur (m/s)	Mesti vindur (m/s)	Hviða (m/s)
1.	13.6	17.5	10.0	0.2	ri		0		4.0	8.8	12.9
2.	11.1	17.6	10.0	0.0			0		3.7	8.8	12.9
3.	10.2	13.0	9.7	0.1	ri		0		2.4	5.7	6.7
4.	9.9	11.3	8.8	1.2	ri		0		4.6	6.7	8.8
5.	9.6	11.7	8.1	0.0			0		3.7	6.2	8.8
6.	9.8	12.5	8.4	---			0		5.5	8.2	11.3
7.	10.3	13.1	9.7	1.0	ri		0		5.9	7.7	10.3
8.	10.4	13.1	8.6	0.1	ri		0		3.1	5.7	7.2
9.	11.7	15.4	8.2	---			0		5.1	8.8	11.8
10.	10.4	13.4	9.5	3.8	ri		0		4.4	7.7	11.3
11.	10.3	13.7	6.6	2.5	ri		0		4.6	8.2	11.3
12.	10.7	13.3	7.7	0.3	ri		0		5.2	8.2	11.3
13.	10.2	12.5	7.8	0.0			0		10.9	18.0	25.2
14.	11.1	13.5	8.7	4.1	ri		0		6.1	15.4	21.1
15.	11.0	14.0	8.1	0.4	ri		0		4.0	7.7	9.3
16.	12.5	15.2	9.2	4.0	ri		0		4.8	6.7	8.8
17.	13.2	17.6	8.9	---			0		5.9	9.3	11.8
18.	13.1	17.6	9.7	---			0		4.2	7.7	9.8
19.	12.9	16.5	9.8	---			0		3.3	6.2	7.7
20.	11.3	14.1	8.6	---			0		2.9	4.6	6.7
21.	12.0	14.2	10.0	0.0			0		5.7	8.2	10.8
22.	13.5	16.3	10.5	---			0		3.8	7.2	9.3
23.	11.7	15.6	9.8	0.0			0		3.3	6.7	8.8
24.	12.2	14.3	9.9	4.7	ri		0		5.2	7.7	8.8
25.	11.4	16.0	10.7	---			0		6.5	13.4	19.0
26.	11.0	13.7	9.1	5.0	ri		0		9.8	14.4	19.6
27.	11.0	13.3	8.7	0.0			0		8.0	11.8	15.4
28.	11.4	13.5	9.0	---			0		7.4	13.9	20.6
29.	12.2	14.1	10.7	24.8	ri		0		10.5	16.0	23.2
30.	11.3	12.5	9.6	15.6	ri		0		12.6	18.5	24.7
31.	11.4	13.3	9.3	9.5	sl		0		7.4	10.3	16.5



Meðalhiti	=	11.4 °C
Frávik frá meðaltali 1931-60	=	0.7 °C
Meðalhámarkshiti	=	14.3 °C
Meðallágmarkshiti	=	9.1 °C
Úrkomumagn	=	77.3 mm
Hlutfall úrkomu af meðaltali 1931-60	=	133.0 %
Meðalvindhraði	=	5.6 m/s