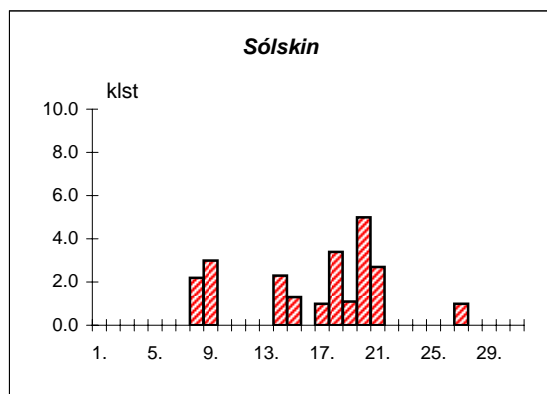
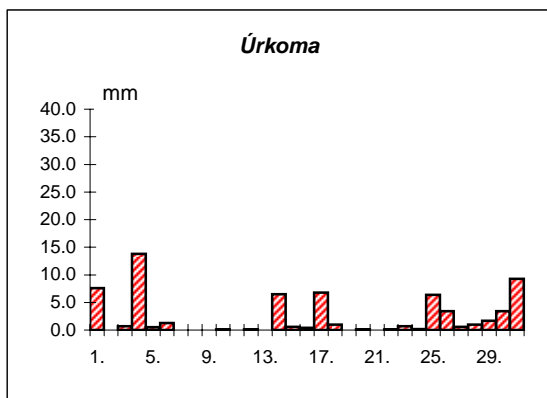
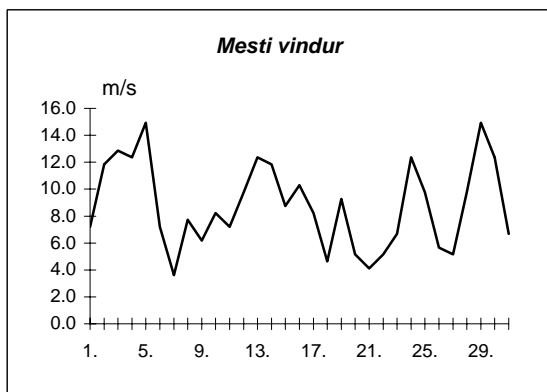
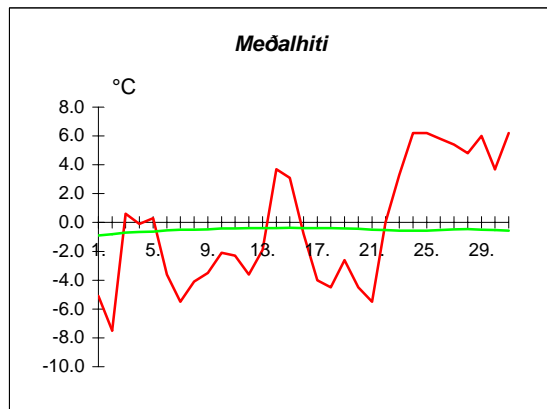
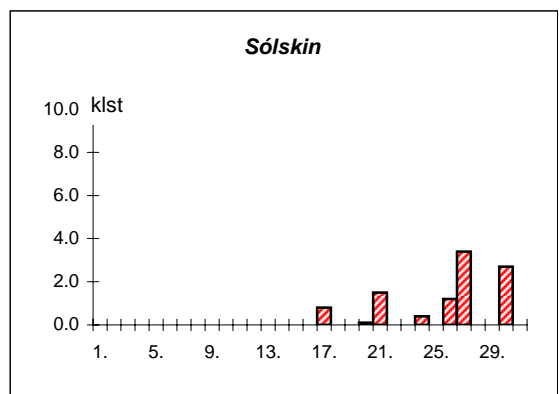
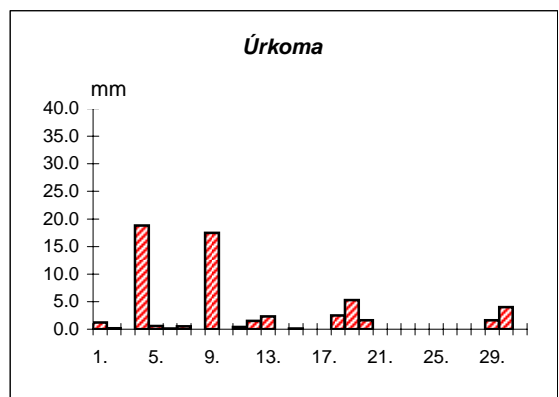
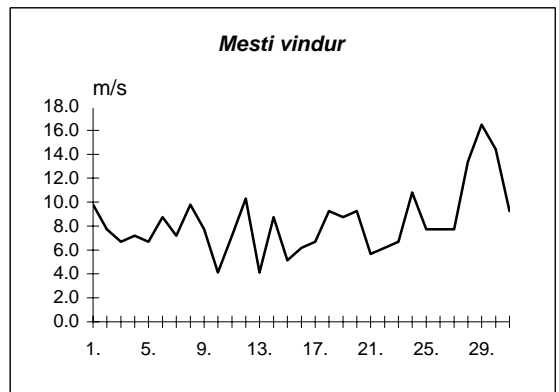
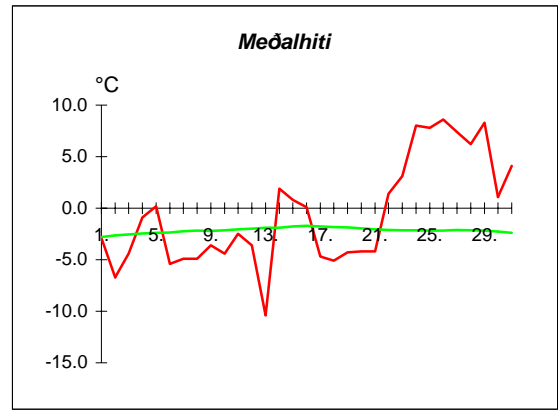


Dags	Meðalhiti (°C)	Hámark (°C)	Lágmark (°C)	Úrkoma (mm)	Úrkomutegund	Snjódýpt (cm)	Snjöhula (0-4)	Sólskin(klst)	Meðalvindur (m/s)	Mesti vindur (m/s)	Hviða (m/s)
1.	-5.1	2.3	-8.1	7.6	sl	8	4	0.0	2.6	7.2	10.3
2.	-7.5	-5.7	-10.2	---		8	4	0.0	4.9	11.8	19.0
3.	0.6	5.4	-6.6	0.7	sn	8	4	0.0	7.9	12.9	25.7
4.	-0.1	4.0	-2.1	13.8	sl	11	4	0.0	6.8	12.4	17.0
5.	0.3	1.3	-2.0	0.5	sn	11	4	0.0	7.9	14.9	21.6
6.	-3.6	1.2	-5.2	1.3	sl	11	4	0.0	2.2	7.2	10.8
7.	-5.5	-3.9	-7.0	---		10	4	0.0	1.8	3.6	5.1
8.	-4.1	-2.9	-7.3	---		10	4	2.2	4.1	7.7	11.8
9.	-3.5	-2.2	-6.4	---		10	4	3.0	2.8	6.2	9.8
10.	-2.1	-1.3	-3.2	0.1	sn	10	4	0.0	6.2	8.2	12.9
11.	-2.3	-0.7	-2.4	0.0		10	4	0.0	3.4	7.2	11.3
12.	-3.6	-1.0	-5.9	0.1	sn	10	4	0.0	4.7	9.8	16.5
13.	-1.9	1.2	-6.9	0.0			4	0.0	7.3	12.4	20.6
14.	3.7	5.0	1.0	6.5	sl	7	4	2.3	4.7	11.8	20.6
15.	3.1	4.6	2.2	0.6	ri	5	4	1.3	3.5	8.8	12.4
16.	-0.8	4.3	-3.3	0.4	sl	7	4	0.0	7.4	10.3	17.5
17.	-4.0	-1.8	-5.9	6.8	sn	15	4	1.0	3.5	8.2	17.5
18.	-4.5	-2.5	-5.9	1.0	sn	10	4	3.4	1.5	4.6	7.2
19.	-2.6	-0.7	-6.0	---		10	4	1.1	4.6	9.3	15.4
20.	-4.5	-1.1	-5.8	0.1	sn	9	4	5.0	1.5	5.1	7.7
21.	-5.5	-3.5	-8.0	---		9	4	2.7	2.3	4.1	5.7
22.	0.0	2.3	-5.7	0.1	sn	9	4	0.0	1.8	5.1	7.2
23.	3.3	4.0	1.0	0.7	sl	9	4	0.0	3.3	6.7	9.8
24.	6.2	7.2	3.9	0.2	ri		0	0.0	7.5	12.4	19.0
25.	6.2	7.2	5.9	6.4	ri		0	0.0	4.6	9.8	14.4
26.	5.8	6.7	4.6	3.4	ri		0	0.0	3.9	5.7	8.8
27.	5.4	6.5	4.3	0.6	ri		0	1.0	3.5	5.1	8.8
28.	4.8	7.1	3.2	1.0	ri		0	0.0	6.9	9.8	14.9
29.	6.0	7.5	2.2	1.7	ri		0	0.0	9.3	14.9	21.6
30.	3.7	7.4	2.4	3.4	ri		0	0.0	3.1	12.4	16.5
31.	6.2	6.9	2.4	9.3	ri		0	0.0	4.6	6.7	10.3



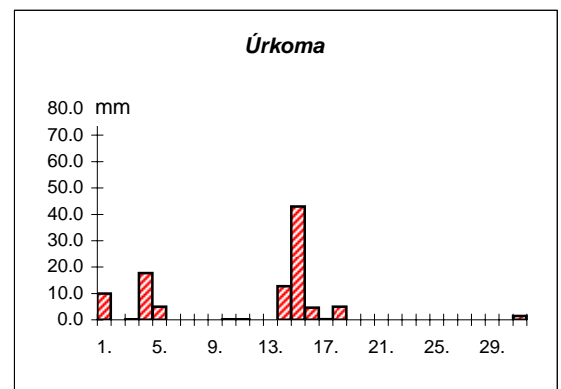
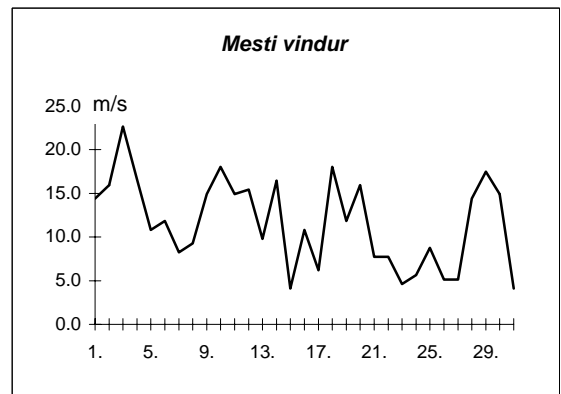
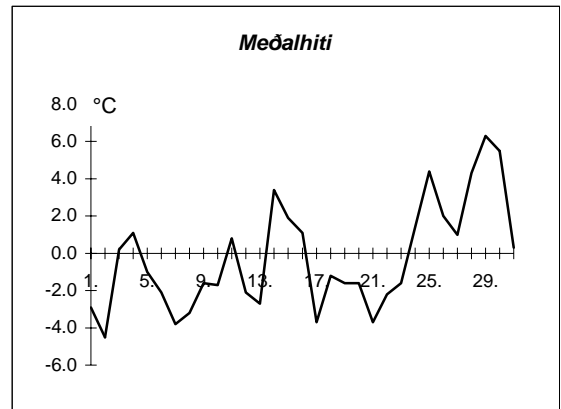
Meðalhiti	=	-0.2 °C
Frávik frá meðaltali 1931-60	=	0.2 °C
Meðalhámarkshiti	=	2.1 °C
Meðallágmarkshiti	=	-2.6 °C
Úrkomumagn	=	66.3 mm
Hlutfall úrkomu af meðaltali 1931-60	=	74.0 %
Meðalvindhraði	=	4.5 m/s
Sólskinsstundir	=	23.0 klst

Dags	Meðalhiti (°C)	Hámark (°C)	Lágmark (°C)	Úrkoma (mm)	Úrkomutegund	Snjódýpt (cm)	Snjöhula (0-4)	Sólskin(klst)	Meðalvindur (m/s)	Mesti vindur (m/s)	Hviða (m/s)
1.	-2.9	3.5	-5.0	1.2	sn	35	4	0.0	6.0	9.8	18.0
2.	-6.7	-3.6	-9.0	0.2	sn	35	4	0.0	3.5	7.7	12.9
3.	-4.4	-2.3	-9.8	---		35	4	0.0	2.5	6.7	11.8
4.	-0.9	0.9	-2.7	18.8	sn	40	4	0.0	4.0	7.2	14.9
5.	0.2	1.3	-0.9	0.6	sn	41	4	0.0	3.1	6.7	12.9
6.	-5.4	1.1	-9.4	0.1	sn	41	4	0.0	3.7	8.8	12.9
7.	-4.9	-2.5	-9.5	0.5	sn	42	4	0.0	2.2	7.2	10.3
8.	-4.9	-3.0	-8.1	0.0		42	4	0.0	3.4	9.8	13.9
9.	-3.6	-1.5	-6.5	17.5	sn	42	4	0.0	2.1	7.7	11.3
10.	-4.4	-3.2	-5.5	0.0		42	4	0.0	1.5	4.1	8.2
11.	-2.5	-1.8	-4.2	0.4	sn	42	4	0.0	2.6	7.2	10.8
12.	-3.6	-1.5	-5.0	1.5	sn	43	4	0.0	4.4	10.3	14.9
13.	-10.4	-3.3	-11.9	2.3	sn	43	4	0.0	2.1	4.1	7.2
14.	1.9	4.0	-11.9	0.0		43	4	0.0	3.7	8.8	14.4
15.	0.8	3.6	-1.6	0.1	ri		4	0.0	1.1	5.1	7.7
16.	0.1	3.5	-0.9	---		35	4	0.0	2.8	6.2	10.8
17.	-4.7	-0.5	-6.0	0.0		35	4	0.8	3.8	6.7	13.9
18.	-5.1	-3.5	-10.0	2.5	sn	39	4	0.0	2.2	9.3	13.4
19.	-4.3	-1.2	-6.9	5.3	sn	40	4	0.0	2.8	8.8	11.8
20.	-4.2	-1.6	-5.9	1.6	sn	42	4	0.1	3.4	9.3	13.9
21.	-4.2	-2.4	-7.7	0.0		42	4	1.5	4.1	5.7	9.8
22.	1.4	3.8	-3.6	---		42	4	0.0	1.9	6.2	13.4
23.	3.1	4.0	-0.3	0.0		41	4	0.0	2.8	6.7	12.4
24.	8.0	9.4	3.6	0.0		35	4	0.4	5.2	10.8	22.1
25.	7.8	11.2	6.0	---		15	4	0.0	3.3	7.7	17.5
26.	8.6	10.5	6.6	---		10	2	1.2	4.1	7.7	14.4
27.	7.4	11.0	5.5	---			2	3.4	3.6	7.7	15.4
28.	6.2	10.6	3.8	---			2	0.0	7.2	13.4	27.3
29.	8.3	11.4	3.2	1.6	sl		2	0.0	10.6	16.5	30.4
30.	1.1	11.7	-0.3	4.0	sl		2	2.7	3.7	14.4	26.8
31.	4.1	10.3	-1.5	0.0			2	0.0	2.4	9.3	17.5



Meðalhiti	=	-0.6 °C
Frávik frá meðaltali 1931-60	=	0.9 °C
Meðalhámarkshiti	=	2.6 °C
Meðallágmarkshiti	=	-3.7 °C
Úrkomumagn	=	58.2 mm
Hlutfall úrkomu af meðaltali 1931-60	=	129.0 %
Meðalvindhraði	=	3.6 m/s
Sólskinsstundir	=	10.1 klst

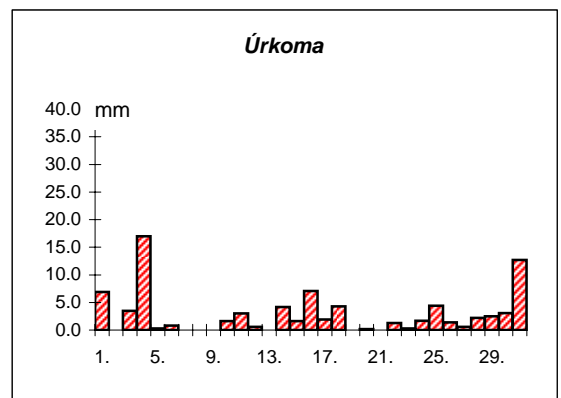
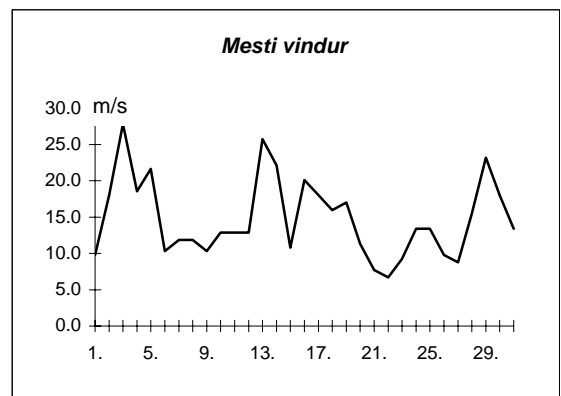
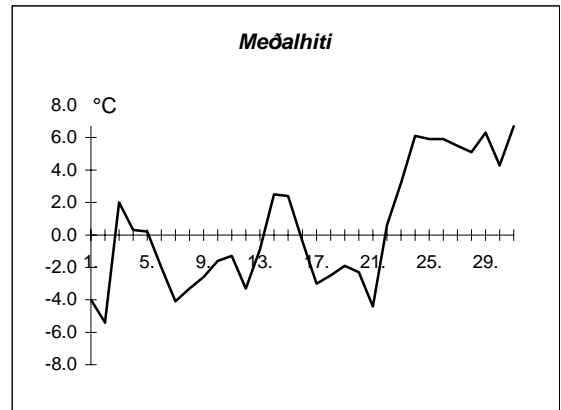
Dags	Meðalhiti (°C)	Hámark (°C)	Lágmark (°C)	Úrkoma (mm)	Úrkomutegund	Snjódýpt (cm)	Snjójúla (0-4)	Sólskin(klst)	Meðalvindur (m/s)	Mesti vindur (m/s)	Hviða (m/s)
1.	-2.9	4.5	-5.2	10.0	ri	3	2		6.7	14.4	20.6
2.	-4.5	-2.6	-6.3	---			2		8.8	16.0	28.3
3.	0.2	3.7	-5.8	0.1	sn	1	2		8.2	22.7	36.6
4.	1.1	7.9	-0.8	17.7	sl		0		6.7	16.6	29.6
5.	-1.0	2.4	-3.8	5.0	sl	5	4		2.6	10.8	9.8
6.	-2.1	1.5	-4.4	---		4	4		4.7	11.8	15.4
7.	-3.8	-0.7	-4.9	---		3	4		4.1	8.2	10.3
8.	-3.2	0.6	-8.1	---		3	4		4.2	9.3	13.4
9.	-1.6	1.9	-3.8	---		3	4		7.2	14.9	19.6
10.	-1.7	-0.2	-2.9	0.1	sn	2	4		9.8	18.0	24.7
11.	0.8	2.0	-2.2	0.1	sn	2	4		8.5	14.9	24.2
12.	-2.1	3.0	-3.6	---		1	4		9.4	15.4	21.6
13.	-2.7	-0.8	-6.2	---		1	4		3.0	9.8	14.4
14.	3.4	5.7	-2.3	12.8	sl		0		8.2	16.5	22.7
15.	1.9	5.6	1.3	43.0	ri		0		2.3	4.1	5.7
16.	1.1	4.3	-1.0	4.6	ri		0		5.3	10.8	17.0
17.	-3.7	0.5	-5.8	0.2	sl	1	4		3.0	6.2	10.3
18.	-1.2	2.6	-5.7	5.0	sn	1	2		8.3	18.0	25.2
19.	-1.6	1.8	-3.5	---		1	2		6.0	11.8	16.0
20.	-1.6	-0.4	-3.1	0.0		1	2		9.5	16.0	21.6
21.	-3.7	0.9	-5.0	---		1	2		2.3	7.7	10.8
22.	-2.2	0.6	-7.0	---		1	2		2.6	7.7	11.3
23.	-1.6	2.6	-3.5	---		1	2		2.5	4.6	6.7
24.	1.4	3.9	-3.3	---		1	2		2.6	5.7	6.7
25.	4.4	10.5	2.0	---			0		2.5	8.8	10.3
26.	2.0	4.8	-0.5	---			0		2.0	5.1	6.2
27.	1.0	5.0	-1.3	---			0		2.3	5.1	6.2
28.	4.3	8.4	-3.3	---			0		6.1	14.4	21.6
29.	6.3	9.3	3.2	---			0		9.2	17.5	26.3
30.	5.5	8.7	3.1	---			0		5.3	14.9	23.2
31.	0.3	6.2	-0.6	1.5	sn	3	4		1.3	4.1	6.2



Meðalhiti	=	-0.3 °C
Meðalhámarkshiti	=	3.4 °C
Meðallágmarkshiti	=	-3.0 °C
Úrkomumagn	=	100.1 mm
Meðalvindhraði	=	5.3 m/s

Útgefandi : **Veðurstofa Íslands**
 Heimilisfang : **Bústaðavegur 9**
150 Reykjavík

Dags	Meðalhiti (°C)	Hámark (°C)	Lágmark (°C)	Úrkoma (mm)	Úrkomutegund	Snjódýpt (cm)	Snjöhula (0-4)	Sólskin(klst)	Meðalvindur (m/s)	Mesti vindur (m/s)	Hviða (m/s)
1.	-4.0	3.0	-5.2	6.9	sl	4	4		4.3	9.8	11.8
2.	-5.4	-2.6	-8.1	0.0		4	4		6.1	18.0	21.1
3.	2.0	4.9	-5.3	3.5	sl	6	4		12.8	27.8	35.0
4.	0.3	4.1	-2.1	17.0	sl		0		10.8	18.5	26.3
5.	0.2	2.8	-2.9	0.3	sn	3	4		13.4	21.6	29.3
6.	-2.0	0.9	-3.5	0.8	sl	4	4		4.7	10.3	14.9
7.	-4.1	-0.7	-6.8	---		4	4		3.5	11.8	16.0
8.	-3.3	-1.0	-4.6	---		4	4		7.2	11.8	16.0
9.	-2.6	-1.4	-5.3	---		4	4		5.6	10.3	12.4
10.	-1.6	0.0	-3.2	1.6	sn	12	4		7.4	12.9	16.5
11.	-1.3	0.4	-2.4	3.0	sn	15	4		5.7	12.9	16.5
12.	-3.3	0.2	-4.3	0.6	sn	13	4		7.4	12.9	17.0
13.	-0.9	2.3	-7.1	---		12	4		13.0	25.7	34.5
14.	2.5	4.0	1.8	4.2	sl	10	2		6.3	22.1	28.8
15.	2.4	4.5	1.6	1.6	ri	6	2		3.9	10.8	15.4
16.	-0.4	4.2	-2.8	7.1	sl		0		11.7	20.1	25.2
17.	-3.0	0.1	-6.3	1.9	sn	2	2		7.8	18.0	23.2
18.	-2.5	0.8	-3.2	4.3	sn	7	4		3.9	16.0	18.0
19.	-1.9	-0.1	-6.7	0.0		7	4		8.8	17.0	21.6
20.	-2.3	0.2	-2.8	0.2	sn	7	4		7.4	11.3	15.4
21.	-4.4	-0.7	-7.5	---			0		4.1	7.7	10.3
22.	0.6	3.2	-3.8	1.3	sn	7	4		3.8	6.7	9.3
23.	3.2	3.7	1.4	0.3	sl	6	4		6.3	9.3	12.4
24.	6.1	7.2	3.5	1.7	sl		0		10.0	13.4	18.0
25.	5.9	7.4	6.0	4.4	ri		0		7.3	13.4	16.0
26.	5.9	6.8	4.0	1.4	ri		0		6.2	9.8	12.9
27.	5.5	6.9	4.3	0.6	ri		0		5.7	8.8	13.9
28.	5.1	7.3	3.6	2.2	ri		0		11.9	15.4	21.6
29.	6.3	7.7	2.8	2.5	ri		0		14.4	23.2	25.7
30.	4.3	7.7	3.1	3.1	ri		0		6.6	18.0	22.1
31.	6.7	7.3	2.7	12.7	ri		0		8.4	13.4	17.5



Meðalhiti	=	0.5 °C
Frávik frá meðaltali 1931-60	=	0.4 °C
Meðalhámarkshiti	=	2.9 °C
Meðallágmarkshiti	=	-1.9 °C
Úrkomumagn	=	83.2 mm
Hlutfall úrkomu af meðaltali 1931-60	=	79.0 %
Meðalvindhraði	=	7.6 m/s