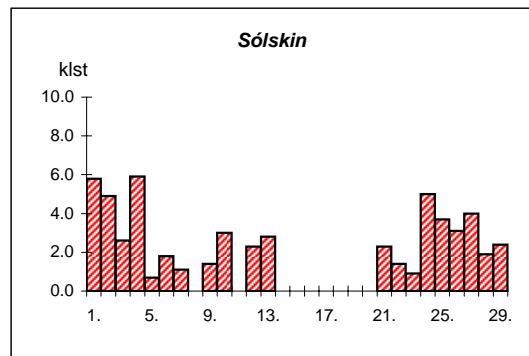
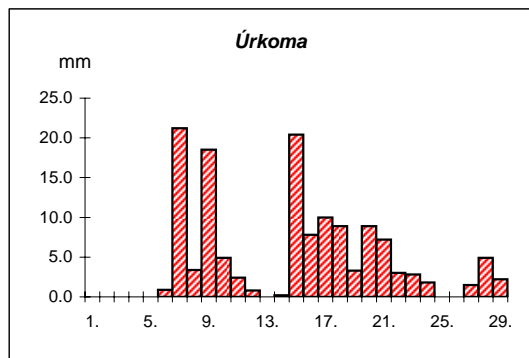
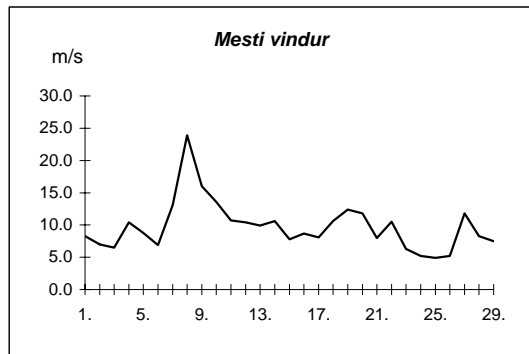
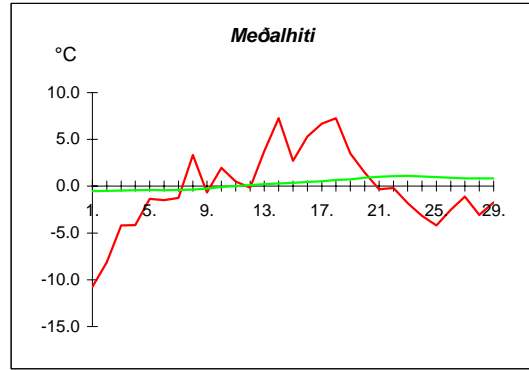


Reykjavík febrúar 2008

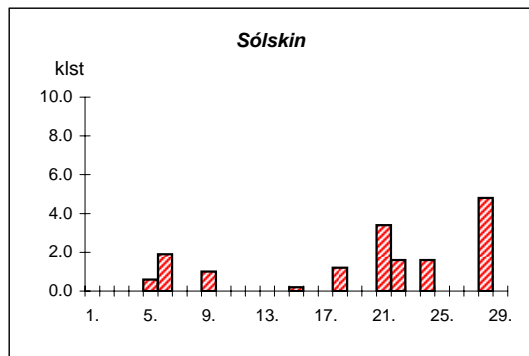
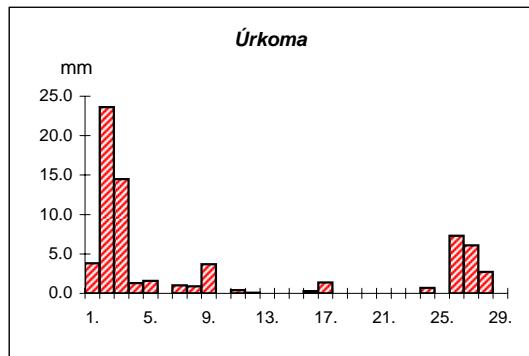
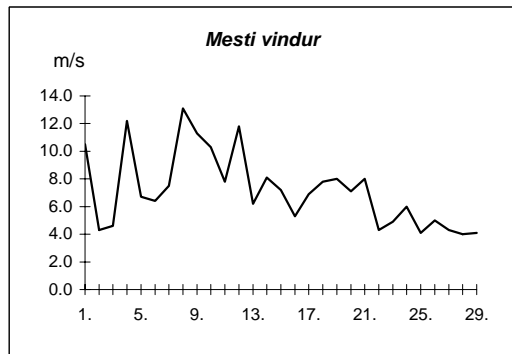
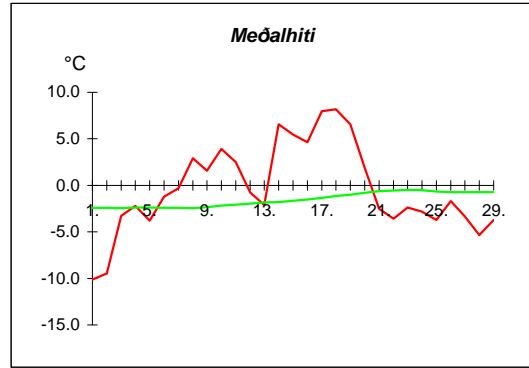
Dags	Meðalhiti (°C)	Hámark (°C)	Lágmark (°C)	Úrkoma (mm)	Úrkomutegund	Snjóþýpt (cm)	Snjóhula (0-4)	Sólskin(klst)	Meðalvindur (m/s)	Mesti vindur (m/s)	Hvíða (m/s)
1.	-10.8	-6.7	-12.0	0.0	sn		2	5.8	3.0	8.3	12.7
2.	-8.1	-3.0	-14.4				2	4.9	2.7	7.0	11.3
3.	-4.2	-1.4	-5.7			5	4	2.6	2.1	6.5	11.1
4.	-4.2	-1.4	-8.0			5	4	5.9	4.7	10.4	18.5
5.	-1.4	-0.3	-3.0	0.0	sn		2	0.7	5.1	8.8	14.2
6.	-1.5	0.2	-4.0	0.9	sn		2	1.8	3.0	6.9	10.6
7.	-1.3	0.8	-3.5	21.2	sn	22	4	1.1	8.1	13.1	22.7
8.	3.3	5.0	-2.0	3.4	sl	19	4	0.0	12.9	23.9	35.1
9.	-0.7	6.9	-3.0	18.5	sl	5	4	1.4	8.4	16.0	23.5
10.	2.0	3.5	-1.7	4.9	sl	10	4	3.0	7.7	13.6	22.7
11.	0.5	3.5	-0.7	2.4	sl	8	4	0.0	5.7	10.7	17.4
12.	-0.2	1.7	-2.0	0.8	sn	9	4	2.3	4.4	10.4	17.1
13.	3.8	6.2	-2.0	0.0	ri	7	4	2.8	7.3	9.9	16.7
14.	7.3	8.6	5.0	0.2	ri			0.0	5.6	10.6	18.3
15.	2.7	8.0	1.9	20.4	ri			0.0	4.0	7.8	15.0
16.	5.3	7.0	1.5	7.8	ri			0.0	4.6	8.7	13.8
17.	6.7	7.8	5.0	10.0	ri			0.0	4.9	8.1	13.4
18.	7.3	8.1	6.7	8.9	ri			0.0	6.6	10.6	16.2
19.	3.5	8.2	-0.2	3.3	sl			0.0	6.5	12.4	19.0
20.	1.5	4.6	-1.5	8.9	sl	7	4	0.0	6.5	11.8	17.8
21.	-0.3	4.7	-2.2	7.2	sn	0	4	2.3	2.2	8.0	13.1
22.	-0.2	1.7	-0.8	3.0	sn	7	4	1.4	3.7	10.5	15.3
23.	-1.8	0.4	-4.4	2.8	sn	9	4	0.9	2.9	6.3	11.3
24.	-3.2	0.2	-4.3	1.8	sn	10	4	5.0	1.9	5.2	8.8
25.	-4.2	0.0	-9.5	0.0	sn	9	4	3.7	2.4	4.9	8.7
26.	-2.5	1.6	-6.0			9	4	3.1	2.4	5.2	7.2
27.	-1.1	1.5	-3.4	1.5	sl	8	4	4.0	4.4	11.8	18.4
28.	-3.1	-0.8	-4.8	4.9	sn	14	4	1.9	3.7	8.3	13.9
29.	-1.7	0.0	-4.1	2.2	sn	14	4	2.4	3.9	7.5	12.9



Meðalhiti	=	-0.2 °C
Frávik frá meðaltali 1961-90	=	-0.6 °C
Meðalhámarkshiti	=	2.6 °C
Meðallágmarkshiti	=	-2.9 °C
Úrkomumagn	=	135.0 mm
Hlutfall úrkomu af meðaltali 1961-90	=	187.5 %
Meðalvindhraði	=	4.9 m/s
Sólskinsstundir	=	57.0 klst

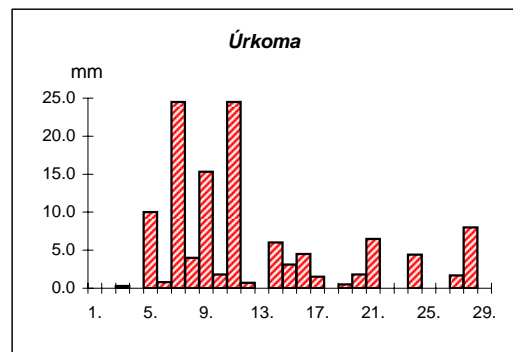
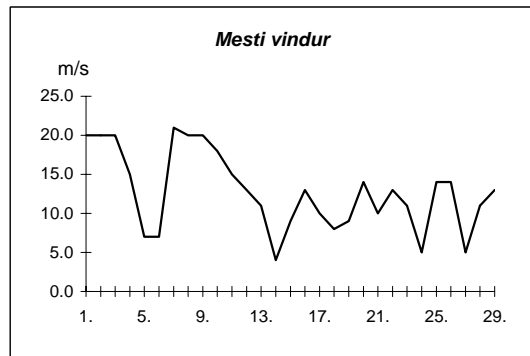
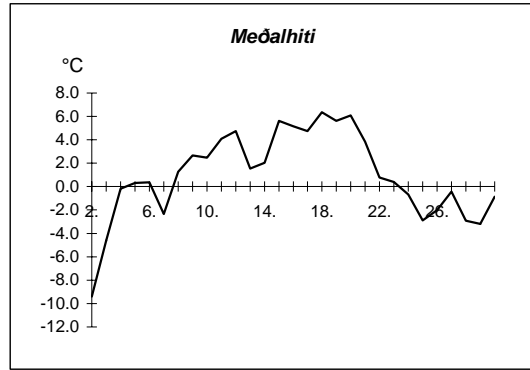
Akureyri febrúar 2008

Dags	Meðalhiti (°C)	Hámark (°C)	Lágmark (°C)	Úrkoma (mm)	Úrkomutegund	Snjóþýpt (cm)	Snjóþhula (0-4)	Sólskin(klst)	Meðalvindur (m/s)	Mesti vindur (m/s)	Hviða (m/s)
1.	-10.1	-7.5	-10.3	3.8	sn	26	4	0.0	5.6	10.5	13.9
2.	-9.5	-8.9	-13.1	23.6	sn	43	4	0.0	2.6	4.3	7.2
3.	-3.3	-1.0	-9.2	14.5	sn	51	4	0.0	2.1	4.6	8.2
4.	-2.2	1.0	-5.5	1.3	sn	55	4	0.0	4.9	12.2	16.6
5.	-3.8	0.4	-6.7	1.6	sn	51	4	0.6	1.9	6.7	13.3
6.	-1.2	0.7	-4.1			48	4	1.9	3.1	6.4	10.7
7.	-0.3	2.0	-2.8	1.0	sl	42	4	0.0	3.6	7.5	14.4
8.	2.9	5.0	-1.8	0.9	sl	42	4	0.0	6.7	13.1	26.9
9.	1.6	5.8	-1.2	3.7	sl	28	4	1.0	5.4	11.3	21.4
10.	3.9	5.3	-1.2	0.0	sn	25	4	0.0	6.7	10.3	21.3
11.	2.5	7.9	1.2	0.4	sn	21	4	0.0	4.2	7.8	15.4
12.	-0.8	2.0	-1.2	0.1	sn	19	4	0.0	5.0	11.8	19.0
13.	-2.1	1.0	-7.4	0.0	sn	16	4	0.0	2.2	6.2	9.8
14.	6.6	8.0	0.0			11	4	0.0	4.5	8.1	14.0
15.	5.5	7.8	4.9	0.0	ri	8	4	0.2	4.3	7.2	14.4
16.	4.6	8.4	1.7	0.3	ri		2	0.0	2.5	5.3	10.6
17.	8.0	9.5	6.0	1.4	ri		2	0.0	4.6	6.9	13.4
18.	8.2	11.2	7.2	0.0	ri			1.2	4.4	7.8	13.7
19.	6.6	9.9	5.9					0.0	5.0	8.0	15.6
20.	1.9	9.0	-0.2					0.0	2.8	7.1	12.6
21.	-2.5	3.8	-3.7	0.0	sl			3.4	2.0	8.0	13.6
22.	-3.6	1.0	-8.2					1.6	1.4	4.3	9.4
23.	-2.4	0.5	-4.0	0.0	sn			0.0	2.4	4.9	7.6
24.	-2.8	-0.3	-5.0	0.7	sn	3	4	1.6	1.9	6.0	10.5
25.	-3.7	-0.5	-7.0	0.0	sn		2	0.0	2.3	4.1	7.4
26.	-1.7	-0.3	-2.8	7.3	sn	10	4	0.0	2.2	5.0	7.2
27.	-3.4	-1.3	-3.7	6.1	sn	15	4	0.0	1.3	4.3	7.3
28.	-5.3	-2.8	-5.8	2.7	sn	17	4	4.8	1.9	4.0	6.4
29.	-3.7	-1.4	-7.4	0.0	sn	12	4	0.0	1.5	4.1	7.7



Meðalhiti	=	-0.4 °C
Frávik frá meðaltali 1961-90	=	1.1 °C
Meðalhámarkshiti	=	2.6 °C
Meðallágmarkshiti	=	-2.9 °C
Úrkomumagn	=	69.4 mm
Hlutfall úrkomu af meðaltali 1961-90	=	161.4 %
Meðalvindhraði	=	3.4 m/s
Sólskinsstundir	=	16.3 klst

Deðs	Meðalhiti (°C)	Hámark (°C)	Lágmark (°C)	Úrkoma (mm)	Úrkomutegund	Snjóþýpt (cm)	Snjóhula (0-4)	Sólskin(klsta)	Meðalvindur (m/s)	Mesti vindur (m/s)
1.	-9.4	-5.7	-9.8				0		10.4	20.0
2.	-4.6	-0.7	-10.9				0		9.9	20.0
3.	-0.2	1.1	-8.1	0.3	sn		2		9.9	20.0
4.	0.3	1.5	-1.7	0.0	sn		2		12.0	15.0
5.	0.4	2.4	-0.9	10.0	sl	2	4		3.7	7.0
6.	-2.4	0.6	-5.4	0.8	sl		2		3.5	7.0
7.	1.3	4.0	-4.8	24.5	ri		0		11.9	21.0
8.	2.7	4.7	-1.3	4.0	sl		2		9.5	20.0
9.	2.5	5.8	-0.3	15.3	sl				13.6	20.0
10.	4.1	5.4	1.2	1.8	ri				14.1	18.0
11.	4.7	8.8	3.8	24.5	ri				9.8	15.0
12.	1.5	5.3	0.5	0.7	ri				7.4	13.0
13.	2.0	3.0	-1.7						6.1	11.0
14.	5.6	6.8	2.2	6.0	ri				2.3	4.0
15.	5.2	7.5	4.9	3.1	ri				6.3	9.0
16.	4.7	8.0	1.7	4.5	ri				4.4	13.0
17.	6.4	7.6	3.8	1.5	ri				5.6	10.0
18.	5.6	7.3	3.8						3.6	8.0
19.	6.1	7.1	5.0	0.5	ri				5.9	9.0
20.	3.8	6.8	1.4	1.8	ri				9.4	14.0
21.	0.8	6.5	-0.3	6.5	ri				6.3	10.0
22.	0.4	3.0	-3.3	0.0	sn				4.0	13.0
23.	-0.7	3.6	-2.8						6.8	11.0
24.	-2.9	1.5	-5.4	4.4	sn		2		2.5	5.0
25.	-2.0	1.4	-6.8				2		7.4	14.0
26.	-0.4	1.6	-0.9				2		8.4	14.0
27.	-2.9	2.4	-6.3	1.7	sn	8	4		3.2	5.0
28.	-3.2	0.2	-5.7	8.0	sn	12	4		5.7	11.0
29.	-0.9	1.2	-6.8	0.0	sn	12	4		8.0	13.0

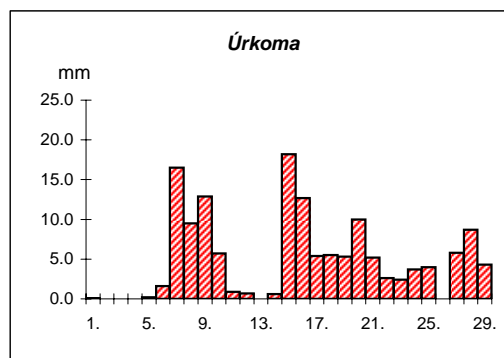
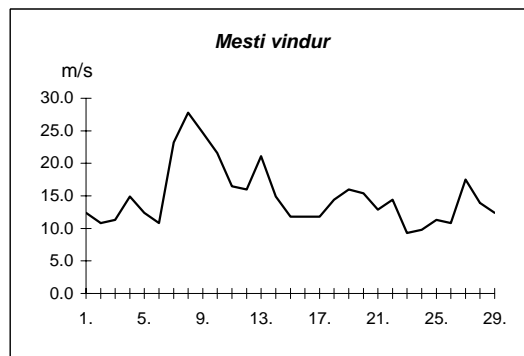
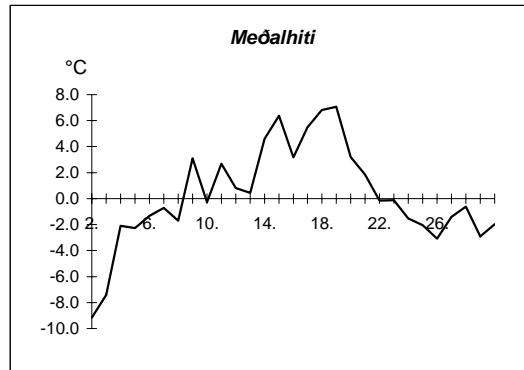


Meðalhiti	=	1.0 °C
Meðalhámarkshiti	=	3.7 °C
Meðallágmarkshiti	=	-1.9 °C
Úrkomumagn	=	119.9 mm
Meðalvindhraði	=	7.3 m/s

Útgefandi : **Veðurstofa Íslands**  
 Heimilisfang : **Bústaðavegur 9**  
**150 Reykjavík**

Keflavík febrúar 2008

Dags	Meðalhiti (°C)	Hámark (°C)	Lágmark (°C)	Úrkoma (mm)	Úrkomutegund	Snjódýpt (cm)	Snjöhula (0-4)	Sólskin(kist)	Meðalvindur (m/s)	Mesti vindur (m/s)	Hvíða (m/s)
1.	-9.2	-6.0	-12.0	0.1	sn		2		5.1	12.4	15.4
2.	-7.4	-3.9	-12.3	0.0	sn		2		7.2	10.8	17.0
3.	-2.1	-0.5	-4.5				2		7.5	11.3	14.4
4.	-2.3	-1.0	-4.7				2		10.8	14.9	19.0
5.	-1.3	-0.5	-2.7	0.2	sn		2		7.4	12.4	17.0
6.	-0.7	0.9	-3.7	1.6	sn	4	4		6.1	10.8	15.4
7.	-1.7	1.5	-3.6	16.5	sn		2		14.5	23.2	31.4
8.	3.1	5.8	-3.1	9.5	sl		2		18.2	27.8	38.6
9.	-0.3	7.2	-3.0	12.9	sl	5	4		13.5	24.7	30.9
10.	2.7	6.5	-1.0	5.7	sl		2		13.9	21.6	29.3
11.	0.8	3.3	-0.6	0.9	sl		2		10.2	16.5	22.7
12.	0.5	2.2	-1.8	0.7	sn		2		8.0	16.0	23.2
13.	4.6	6.3	-1.1	0.0	ri				14.0	21.1	28.3
14.	6.4	10.4	5.4	0.6	ri				9.1	14.9	20.1
15.	3.2	5.8	2.5	18.2	ri				6.7	11.8	18.0
16.	5.5	7.2	1.4	12.7	ri				7.3	11.8	16.0
17.	6.8	7.7	4.9	5.4	ri				7.7	11.8	15.4
18.	7.1	8.4	5.4	5.5	ri				9.5	14.4	19.0
19.	3.2	7.8	0.1	5.3	sl				9.6	16.0	21.1
20.	1.9	5.5	-1.5	10.0	sl		2		10.7	15.4	22.7
21.	-0.2	5.5	-1.2	5.2	sl		2		3.0	12.9	17.0
22.	-0.1	1.7	-0.4	2.6	sn	2	4		7.3	14.4	19.6
23.	-1.5	0.3	-4.7	2.4	sn	5	4		4.7	9.3	12.4
24.	-2.1	-0.2	-3.6	3.7	sn	7	4		2.8	9.8	12.4
25.	-3.1	-0.2	-7.0	4.0	sn	8	4		6.0	11.3	14.9
26.	-1.4	1.0	-3.8			7	4		3.7	10.8	14.9
27.	-0.6	1.0	-1.9	5.8	sn	12	4		7.8	17.5	24.7
28.	-2.9	0.4	-4.7	8.7	sn	18	4		7.1	13.9	18.5
29.	-2.0	-1.0	-3.9	4.3	sn	20	4		8.4	12.4	15.4



Meðalhiti	=	0.2 °C
Frávik frá meðaltali 1961-90	=	-0.4 °C
Meðalhámarkshiti	=	2.9 °C
Meðallágmarkshiti	=	-2.3 °C
Úrkomumagn	=	142.5 mm
Hlutfall úrkomu af meðaltali 1961-90	=	154.0 %
Meðalvindhraði	=	8.5 m/s