

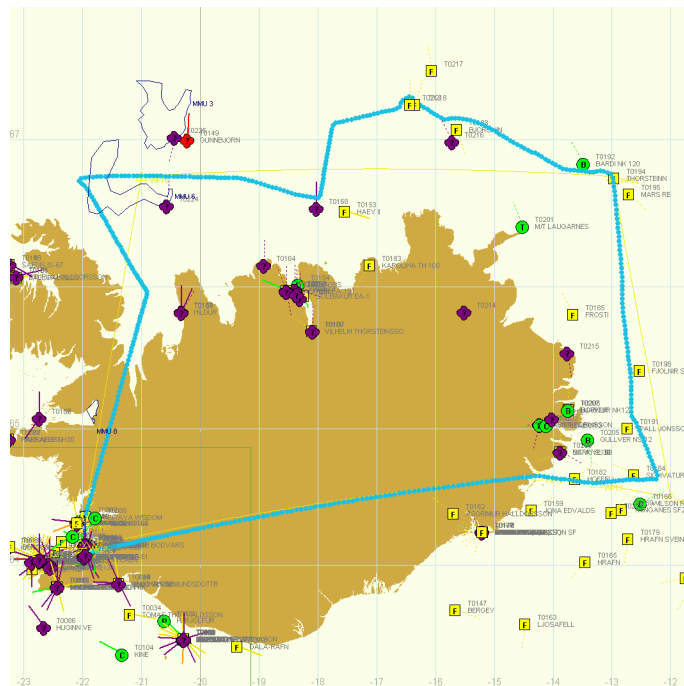


Ísskýrsla TF-SIF
19. janúar 2010
Flug nr. 00310.025

Áhöfn:

Flugstjóri	Hafsteinn Heiðarsson
Flugmaður	Benóný Ásgrímsson
Flugmaður 2 / Þjálfunarfl.	
Yfirstýrimaður	Auðunn F. Kristinsson
Stýrimaður	Hreggviður Símonarson
Stýrimaður	Vilhjálmur Óli Valsson
Aðrir	

Flugleið:



Þriðjudaginn 19.janúar 2010 fór flugvél Landhelgisgæslunnar í eftirlits – og ískönnunarflug fyrir norðurlandi.

Kl.2030 var komið að ísbreiði út af Húnaflóa. Um var að ræða þéttar ísspangir og gisinn ís á milli. Ísinn var kortlagður á með SLAR (sjá kort að neðan).



Ísskýrsla TF-SIF
19. janúar 2010
Flug nr. 00310.025



Megin ísinn lá um eftirtalda staði:



Ísskýrsla TF-SIF
19. janúar 2010
Flug nr. 00310.025

Property	Value	Property	Value
Category	SLAR	Category	SLAR
Date	2010-01-19	Date	2010-01-19
Time	20:30:18	Time	20:26:48
Latitude	N66°39.83'	Latitude	N67°16.92'
Longitude	W020°28.70'	Longitude	W020°10.30'
Geometry	Polygon	Geometry	Polygon
Area	1350.5 km ²	Area	-
Points		Points	
... N66°39.83'	W020°28.70'	... N67°16.92'	W020°10.30'
... N66°39.89'	W020°30.68'	... N67°14.13'	W020°09.15'
... N66°39.35'	W020°31.63'	... N67°12.08'	W020°12.71'
... N66°36.79'	W020°33.15'	... N67°09.92'	W020°14.32'
... N66°37.97'	W020°44.11'	... N67°08.06'	W020°16.27'
... N66°41.99'	W020°54.68'	... N67°04.21'	W020°14.83'
... N66°41.89'	W021°00.68'	... N67°02.53'	W020°17.16'
... N66°37.53'	W021°21.36'	... N66°59.74'	W020°25.42'
... N66°39.07'	W021°30.75'	... N66°58.14'	W020°34.57'
... N66°43.65'	W021°34.91'	... N66°57.48'	W020°35.86'
... N66°53.35'	W021°23.89'	... N66°56.80'	W020°36.03'
... N66°59.61'	W021°23.31'	... N66°56.48'	W020°40.19'
... N66°59.02'	W021°38.33'	... N66°55.82'	W020°44.81'
... N66°52.59'	W021°50.43'	... N66°57.81'	W020°50.01'
... N66°35.16'	W021°54.76'	... N66°56.16'	W020°53.59'
... N66°32.38'	W021°54.07'	... N66°58.39'	W020°56.46'
... N66°30.44'	W021°52.23'	... N67°01.06'	W020°53.56'
... N66°29.65'	W021°44.11'	... N67°03.77'	W020°58.36'
... N66°32.91'	W021°34.20'	... N67°06.55'	W021°00.57'
... N66°28.95'	W021°22.94'	... N67°07.49'	W021°03.03'
... N66°32.97'	W021°12.04'	... N67°09.63'	W020°57.20'
... N66°35.75'	W020°57.19'	... N67°11.03'	W021°00.92'
... N66°33.25'	W020°42.47'	... N67°12.93'	W020°57.48'
		... N67°14.57'	W020°53.47'
		... N67°17.82'	W020°53.51'
		... N67°20.76'	W020°58.41'
		... N67°23.07'	W021°04.85'
		... N67°23.07'	W020°51.97'
		... N67°21.94'	W020°38.52'
		... N67°16.70'	W020°39.16'
		... N67°13.94'	W020°36.59'
		... N67°11.45'	W020°31.36'
		... N67°11.67'	W020°27.20'
		... N67°13.58'	W020°22.55'
		... N67°16.29'	W020°18.34'
		... N67°19.45'	W020°14.79'
		... N67°19.16'	W020°09.07'

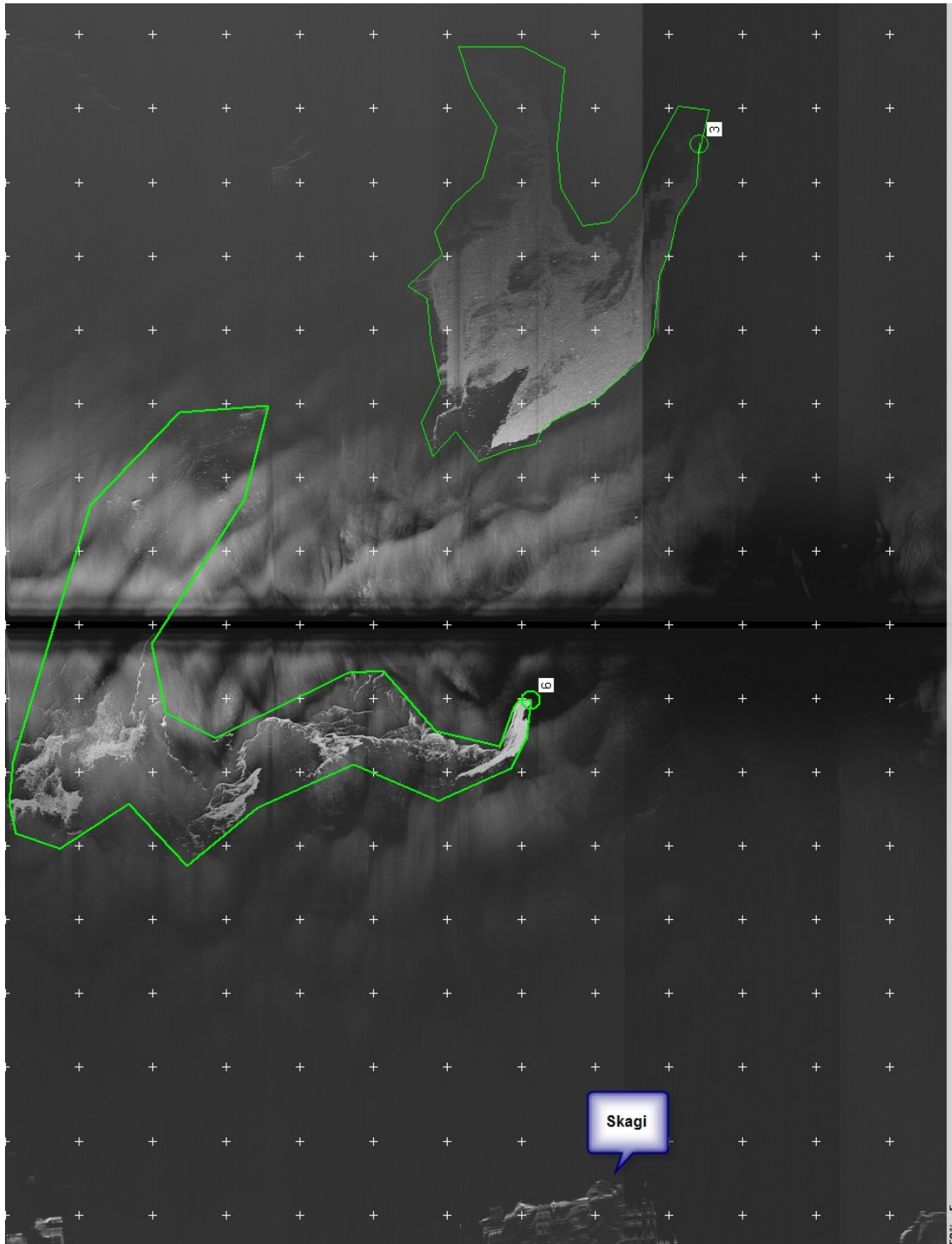


Ísskýrsla TF-SIF
19. janúar 2010
Flug nr. 00310.025

SLAR mynd af ísnum. Ath. myndin snýr í 010° rv. Þéttleikinn er í samræmi við myndina, þ.e. ljósu svæðin eru þéttari.



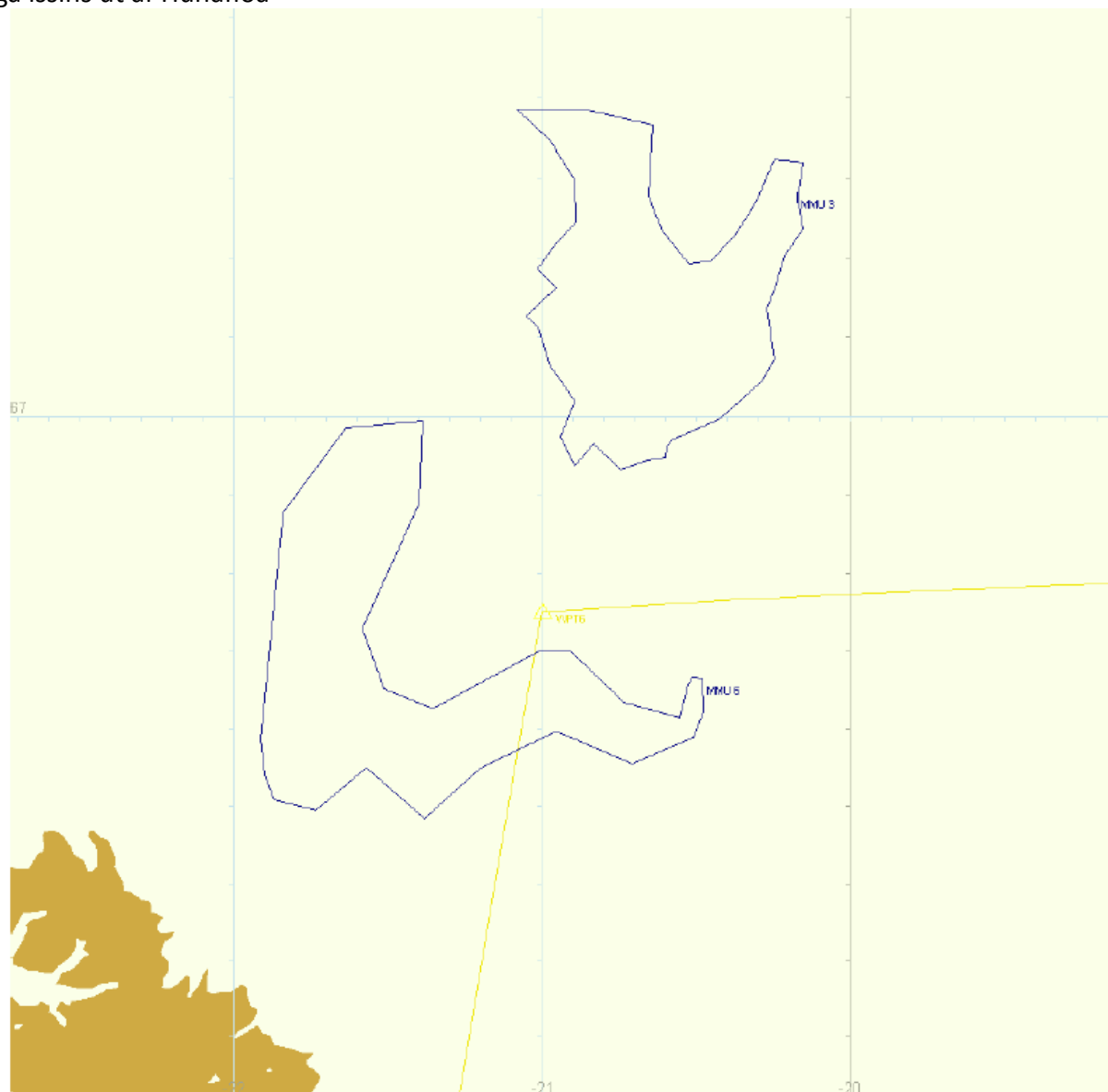
Ísskýrsla TF-SIF
19. janúar 2010
Flug nr. 00310.025





Ísskýrsla TF-SIF
19. janúar 2010
Flug nr. 00310.025

Lega íssins út af Húnaflóa



Veður: SSA- 25-30 hn. Létt skýjað.

Auðunn F. Kristinsson
Yfirstm. TF-SIF