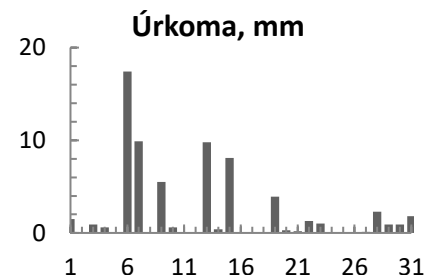
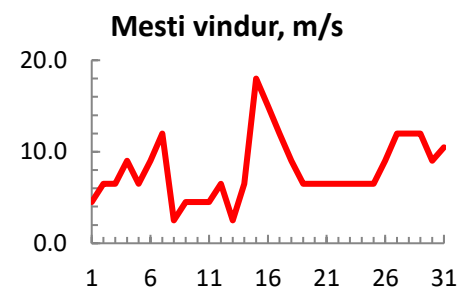
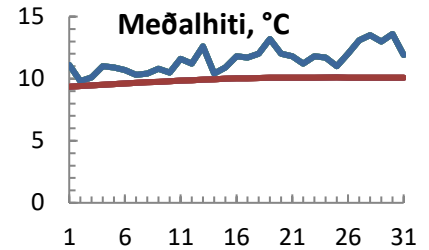


dagur	meðalhiti (°C)	Hámark (°C)	Lágmark (°C)	Úrkoma (mm)	Úrkomutegund	Snjódýpt (cm)	Snjóhula (0-4)	Sólskin (klst)	Meðalvindur (m/s)	Mesti vindur (m/s)	Hviða (m/s)
1	11.1	12.8	9.2	1.5	ri	0	0		1.8	4.5	
2	9.8	13.0	7.9			0	0		3.8	6.5	
3	10.1	13.5	6.3	0.9	ri	0	0		3.4	6.5	
4	11.0	13.0	8.5	0.6	ri	0	0		4.9	9.0	
5	10.9	13.0	9.0			0	0		4.5	6.5	
6	10.7	12.2	9.5	17.4	ri	0	0		5.3	9.0	
7	10.3	12.2	8.2	9.9	ri	0	0		6.0	12.0	
8	10.4	13.6	7.7			0	0		1.7	2.5	
9	10.8	13.0	8.5	5.5	ri	0	0		2.5	4.5	
10	10.5	14.0	6.7	0.6	ri	0	0		3.1	4.5	
11	11.6	14.2	9.0			0	0		2.8	4.5	
12	11.2	14.0	8.7			0	0		3.6	6.5	
13	12.6	15.4	10.5	9.8	ri	0	0		1.7	2.5	
14	10.4	14.0	9.7	0.4	ri	0	0		2.7	6.5	
15	10.9	12.5	9.5	8.1	ri	0	0		10.2	18.0	
16	11.8	16.0	8.7			0	0		5.3	15.0	
17	11.7	14.5	9.4			0	0		3.9	12.0	
18	12.0	14.5	9.9			0	0		5.0	9.0	
19	13.2	15.8	10.9	3.9	ri	0	0		5.8	6.5	
20	12.0	15.8	9.2	0.3	ri	0	0		3.8	6.5	
21	11.8	13.0	9.9	0.2	ri	0	0		2.7	6.5	
22	11.2	13.0	10.2	1.3	ri	0	0		2.6	6.5	
23	11.8	14.2	9.5	1.0	ri	0	0		3.7	6.5	
24	11.7	13.0	10.4			0	0		2.1	6.5	
25	11.0	13.5	9.9			0	0		4.1	6.5	
26	12.0	16.0	8.4			0	0		6.7	9.0	
27	13.1	14.8	10.9	0.1	ri	0	0		7.6	12.0	
28	13.5	18.6	11.2	2.3	ri	0	0		4.5	12.0	
29	13.0	16.8	9.0	0.9	ri	0	0		7.1	12.0	
30	13.6	18.0	11.2	0.9	ri	0	0		5.9	9.0	
31	11.9	16.0	10.4	1.8	ri	0	0		4.9	10.5	



Meðalhiti (°C)	11.5
Frávik frá meðaltali 1961 - 1990 (°C)	1.1
Meðalhámarkshiti (°C)	14.3
Meðallágmarkshiti (°C)	9.3
Úrkomumagn (mm)	67.4
Hlutfall úrkomu af meðaltali 1961-1990 (%)	97.0
Meðalvindhraði (m/s)	4.3